

Cornell University
Cooperative Extension
of Suffolk County

Suffolk County Marine
Environmental Learning Center

3690 Cedar Beach Road
Southold, New York 11971
t. 631.852.8660
f. 631.852.8662

2016 Southampton Town Trustees Shellfish Seed Planting Report

800,000 clams with an average of 16 millimeters in shell length were planted in Moriches Bay on November 9th, 2016. Using a hydraulic “rake” CCE and Trustee staff along with Trustee Schultz prepared the bottom, planting the clams directly behind the rake.

On December 1st, 2016, a smaller project site in Quantuck Bay near the Quogue Village Dock was planted in the same manner with 100,000 clams, average shell length 16 mm.

Experiments near the Moriches site earlier in the year showed that the bottom was made more conducive to clam burrowing by cultivation; the faster the clams can burrow, the better their chances of survival. In some areas cultivating the bottom may allow for less mortality due to predation and winter kill (clams laying on top of a hard substrate over the winter).

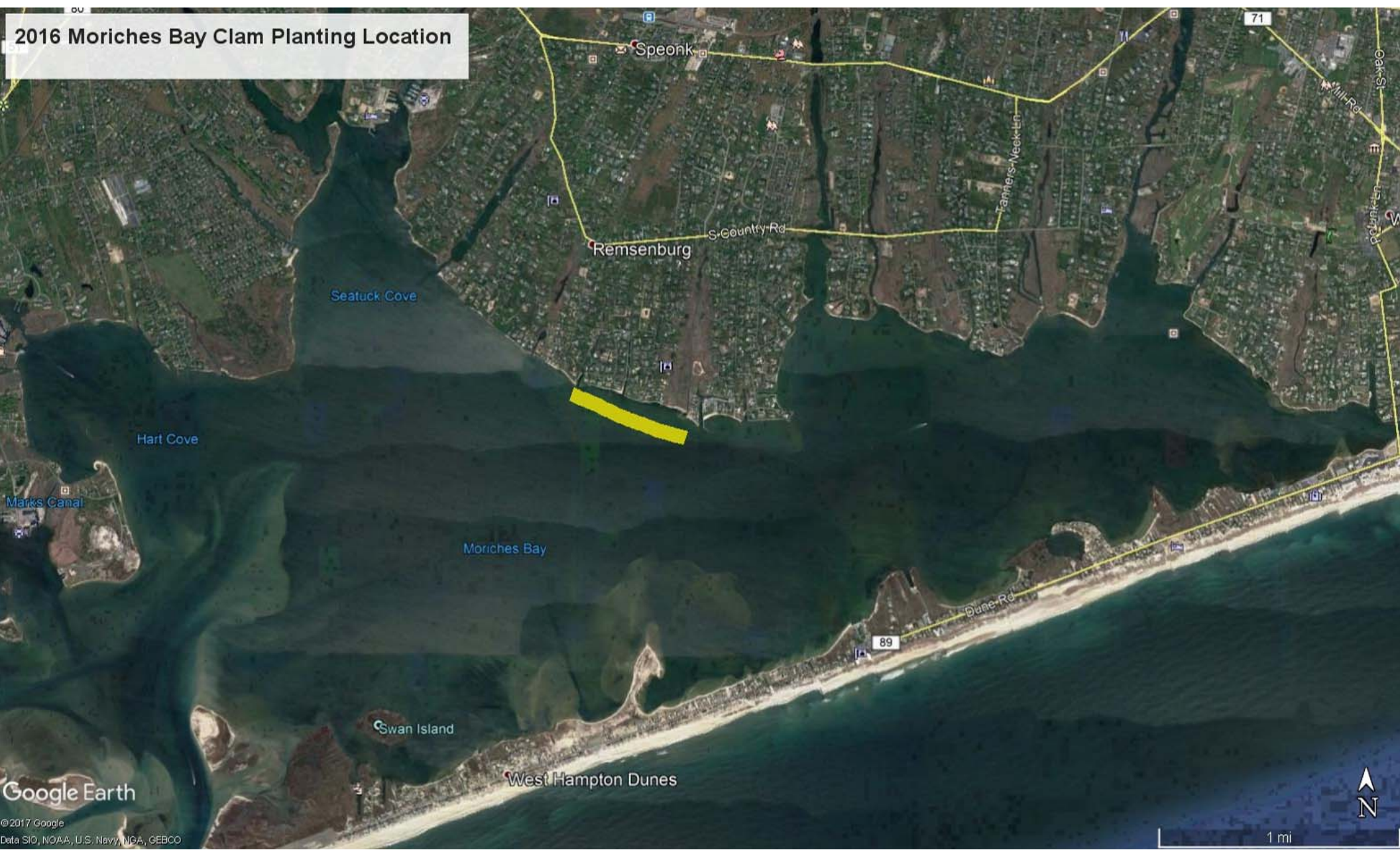
50,000 oysters were planted in Sag Harbor Cove on November 3rd ; these measured 50 mm in shell height. 20,000 oysters of the same size were planted in Cold Spring Pond on the same day

No scallops were planted due to production issues in 2016.

See maps that follow for planting locations.

Prepared by Gregg Rivara

2016 Moriches Bay Clam Planting Location



Google Earth

© 2017 Google
Data SIO, NOAA, U.S. Navy, NGA, GEBCO

2016 Cold Spring Pond Oyster Planting Locations



2016 Quantuck Bay Clam Planting Location



Google Earth

©2017 Google



1000 ft

2016 Sag Harbor Cove Oyster Planting Locations

