



Proposed Aquifer Protection Overlay District Preservation Area



DRAFT

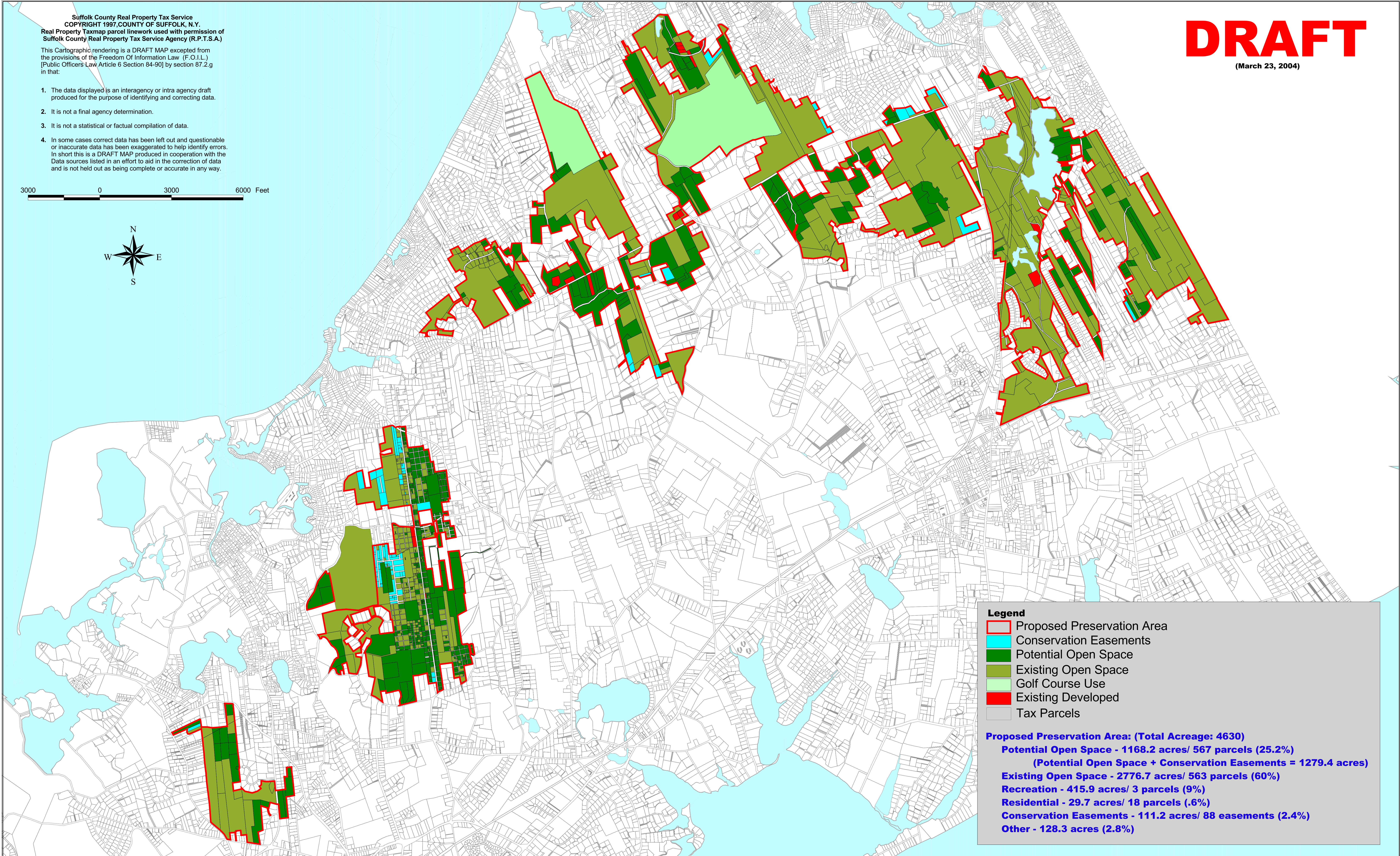
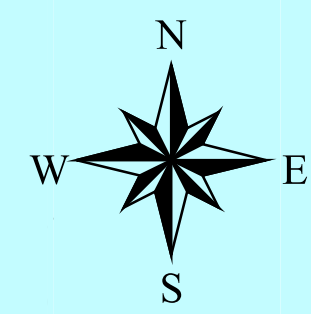
(March 23, 2004)

Suffolk County Real Property Tax Service
COPYRIGHT 1997, COUNTY OF SUFFOLK, N.Y.
Real Property Taxmap parcel linework used with permission of
Suffolk County Real Property Tax Service Agency (R.P.T.S.A.)

This Cartographic rendering is a DRAFT MAP excepted from the provisions of the Freedom Of Information Law (F.O.I.L.) [Public Officers Law Article 6 Section 84-90] by section 87.2.g in that:

1. The data displayed is an interagency or intra agency draft produced for the purpose of identifying and correcting data.
2. It is not a final agency determination.
3. It is not a statistical or factual compilation of data.
4. In some cases correct data has been left out and questionable or inaccurate data has been exaggerated to help identify errors. In short this is a DRAFT MAP produced in cooperation with the Data sources listed in an effort to aid in the correction of data and is not held out as being complete or accurate in any way.

3000 0 3000 6000 Feet



Legend

- Proposed Preservation Area
- Conservation Easements
- Potential Open Space
- Existing Open Space
- Golf Course Use
- Existing Developed
- Tax Parcels

Proposed Preservation Area: (Total Acreage: 4630)

- Potential Open Space - 1168.2 acres/ 567 parcels (25.2%)**
(Potential Open Space + Conservation Easements = 1279.4 acres)
- Existing Open Space - 2776.7 acres/ 563 parcels (60%)**
- Recreation - 415.9 acres/ 3 parcels (9%)**
- Residential - 29.7 acres/ 18 parcels (.6%)**
- Conservation Easements - 111.2 acres/ 88 easements (2.4%)**
- Other - 128.3 acres (2.8%)**