

In total, the 2015 Threatened and Endangered Species Program confirmed the fledging of 52 piping plovers from 31 nests and re-nests managed by the Southampton Town Trustees. Of the 31 nests laid, 18 of them were exclosed. The remaining 13 were unable to be exclosed or predated before 4 eggs was reached.

The 28 total nesting pairs of piping plovers produced a final productivity of 1.86 for the 2015 season. Least tern pairs were estimated at 211 and produced approximately 175 fledges. A total of 44 Seabeach amaranth plants were also counted along with an estimated 4,309 Seabeach knotweed plants.

Ocean Sites: (See attached maps for nesting locations)

Westhampton Island contains two sub sites. This barrier island is subject to routine storms. Continuous erosion creates limited habitat in some areas, while others face threats from fox, crows as well as ORV.

Hampton Beach: The western boundary of this site is in Westhampton Beach (Roger's Pavilion) east to Dolphin Lane. The 2015 breeding season was home to 3 pairs that fledged a total of 6 birds. Unleashed dogs pose a major threat to this area. Erosion played a major factor at this site early in the season limiting accessible habitat.

Least Terns at this site was estimated that 42 pairs that fledged 18 birds. 41 Seabeach Amaranth plants were observed.

PIPL Site Activity: 3 Pair, 6 Fledge

PIPL Sub-Site Productivity: 2.0

Tiana Beach: The western boundary of this site begins at Dolphin Lane east to Tiana Pavilion. Much of this site was heavily eroded this season, leaving little habitat for nesting birds. One pair fledged one bird from this site. There was no Least tern colony or plants observed at this site.

PIPL Site Activity: 1 Pair, 1 Fledge

PIPL Sub-Site Productivity: 1.00

Southampton Beach contains three sub-sites based on the location of road accesses. At approximately 3.5 miles, this is one of the largest sites monitored by the Trustees and is located within the Village of Southampton. . Off road vehicles, unleashed dogs and beach raking are regular issues at this site.

Overall PIPL Site Productivity: 3.5

Shinnecock East County Park to Road D: This area of Southampton beach is adjacent to an area known as the picnic area. This sub-site remained inactive all season and no plants were observed.

PIPL Site Activity: 0 Pair, 0 Fledge

PIPL Sub-Site Productivity: 0.00

Road D to Halsey Neck Lane:

PIPL Site Activity: 3 Pairs, 11 Fledges

PIPL Sub-Site Productivity: 3.67

Halsey Neck Lane to South Main St. This season 1 pair fledged 3 birds. 21 Least terns fledged 13 birds. There were no plants observed at this site.

PIPL Site Activity: 1 Pairs, 3 Fledge

PIPL Sub-Site Productivity: 3.0

Gin Lane Beach is located within the Village of Southampton. This site does not have a lot of suitable habitat and no Piping Plover or Least Terns were recorded here. There was also no Seabeach Amaranth or Knotweed at this site.

PIPL Site Activity: 0 Pair, 0 Fledges

PIPL Site Productivity: 0.0

Old Town Beach is the eastern most sites located within the Village of Southampton. One pair observed at this site. Shortly after the nest was exclosed an extreme high tide washed the nest out and the pair never re-nested.

PIPL Site Activity: 1 Pairs, 0 Fledge

PIPL Site Productivity: 0.00

Watermill Beach is located within the Town of Southampton and is broken up into three separate sub-sites based on the names of the town run beaches. Fowlers, Flying Point, and Scott Cameron (Mecox) compromise a total of five access points, four of which are designated public beaches with lifeguards on duty. As a result, this is a high use site and struggles with unleashed dogs, predators and ORV access.

Overall PIPL Site Productivity: 1.4

Fowlers Beach: This site was home to two pairs of Piping Plovers. One of the nests was exclosed and washed out. The other nest fledged one bird.

PIPL Site Activity: 2 Pair, 1fledge

PIPL Sub-Site Productivity: .5

Flying Point Beach: Mecox Lake separates Flying Point and Scott Cameron beach. This area is an excellent source of food. This season the mudflats were flooded and one pair nested in very close proximity to the beach access on Flying Point Road. The nest was predated and the pair did not re-nest. 1 knotweed plant was observed.

PIPL Site Activity: 1 Pair, 0 fledges

PIPL Sub-Site Productivity: 0.0

Scott Cameron Beach: The westernmost and easternmost boundaries of this site are Town Parks and Recreation managed beach areas, and therefore high in human activity. The three nests at this site were not exclosed and fledged 6. 13 Least terns fledged from this site and no plants were observed.

PIPL Site Activity: 3 Pairs, 6 Fledges
PIPL Sub-Site Productivity: 2.0

Sam's Creek Beach This season one pair laid 6 eggs. After the pair lost its first brood to predation it laid a second nest of 2 eggs but abandoned the nest shortly after it was laid.

PIPL Site Activity: 1 Pair, 0 Fledges
PIPL Site Productivity: 0.0

Sagaponack Lake Beach is separated into two sub-sites with the lake acting as the divider. The Sagaponack cut was closed for the entirety of the season and proves excellent for productivity this year. Sagaponack was the most productive site this year.

Overall PIPL Site Productivity: 2.5

Sagaponack Lake West 5 pairs nested at this site fledging 15. The large Least tern colony fledged 51. 2 Seabeach amaranth plants were fenced.

PIPL Site Activity: 5 Pairs, 14 Fledges
PIPL Sub-Site Productivity: 2.8

Sagaponack Lake East: The western most section at this sub-site is the area located by the lake. This season one pair of birds fledged one bird from a 5- egg nest. The fifth egg did not hatch.

PIPL Site Activity: 1 Pairs, 1 Fledges
PIPL Sub-Site Productivity: 1.0

Fairfield Pond Lane Beach is the eastern most beach within the Town of Southampton Trustee managed sites, located between Gibson Lane and Town Line road. Peter's Pond access divides the site into east and west sub-sites.

Overall PIPL Site Productivity: 1.67

Fairfield Pond Lane Beach West 1 pair was located at this site. Both nests were exclosed.

PIPL Site Activity: 1 Pairs, 3 Fledges
PIPL Sub-Site Productivity: 3

Fairfield Pond Lane Beach East: Both nests were exclosed.

PIPL Site Activity: 2 Pair, 2 Fledges
PIPL Sub-Site Productivity: 1.0

Bay Sites: (See attached maps for nesting locations)

Red Cedar Point is located on a private residence in which the homeowner has given the Trustees permission to access the property and manage any T&E species present. This site is closed to driving and is not open to the public. 2 pairs nested at this site. One nest fledged 2 while the other nest was lost to predation and never re-nested. A late May fish kill in Peconic Bay washed hundreds of dead fish ashore and staff observed fox feeding here. 2 Seabeach knotweed plants were counted at this site.

PIPL Site Activity: 2 Pairs, 2 Fledges

PIPL Site Productivity: 1.0

Red Creek Pond: The first ever Piping Plover for this site was recorded in 2008, but none have returned since then. This site is located within a private residence and although access is limited some illegal beach driving and bonfires do occur, however the beach is eroding making ORV usage limited. There was a small Least tern colony observed in late June but was not productive.

PIPL Site Activity: 0 Pair, 0 Fledges

PIPL Site Productivity: 0.0

Squires Pond had no nesting piping plovers this site is very popular with dog owners and unleashed dogs were often found running. No least tern activity was observed at this site.

PIPL Site Activity: 0 Pair, 0 Fledges

PIPL Site Productivity: 0.0

Meschutt Beach East did not have any T&E species present this season. This site does not have any suitable habitat as most of it is bulk headed. In addition, it is very heavily used for recreational purposes. This includes boating activity and beachgoers to the Peconic Beach Club.

PIPL Site Activity: 0 Pairs

PIPL Site Productivity: 0.0

Canoe Place Beach: Although there is some suitable habitat at this site, it is limited, at high tide the beach completely disappears. The area is also heavily used by the residents of the private community the beach borders. No birds have ever nested here in the past and no vegetative species were recorded as well.

PIPL Site Activity: 0 Pairs

PIPL Site Productivity: 0.0

Fish Cove/North Sea Harbor is two separate sites within the same vicinity. Fish Cove is located along Noyack Rd and is very small. This site is used extensively by ORV's and the sand is very firm and not suitable. The North Sea Harbor site is a small island located within the harbor. There is currently no suitable habitat at this site. 3 knotweed plants were observed.

PIPL Site Activity: 0 Pairs

PIPL Site Productivity: 0.0

Towd Neck is the largest bay site monitored by the Southampton Trustees and is broken up into two sub-sites with the inlet into North Sea Harbor as the divider. Both sub-sites are high use areas but vary in regard to beach profile. The greatest threat facing Towd is the use of recreational vehicles.

Overall PIPL Site Productivity: 2.0

Towd Neck West: No T&E species were present at this site. Two immediate threats to successful nesting at this sub-site are human activity and a lack of suitable habitat. Approximately ¼ of this site is bulk headed with the tide reaching the bulkhead, while the remainder is heavily used by ORV traffic, though high tides and beach erosion are making this more difficult as conditions worsen.

PIPL Site Activity: 0

PIPL Sub-Site Productivity: 0.0

Towd Neck East: This season one pair fledged 2. The large Least tern colony that historically has been at this site was more productive this year. There has been a fox problem at this site the past few years. This year 29 Least terns fledged from this site. Off road vehicles continue to be a serious problem at this site.

. There was an estimated 3765 Seabeach Knotweed plants.

PIPL Site Activity: 1 Pairs, 2 Fledge

PIPL Sub-Site Productivity: 2.0

Wooley Pond is separated into two sites due to the inlet into the Pond. Both sub-sites have limited suitable habitat and therefore no piping plovers or least terns have ever been recorded nesting here. No knotweed plants were counted here.

PIPL Site Activity: 0 Pairs

PIPL Site Productivity: 0.0

Roses Grove and Fresh Pond both have a lack of suitable habitat for piping plover and least tern nesting. This may be a result of the extensive use of bulk heading and steep slope of the beach profile. No Seabeach Knotweed plants were counted at Fresh Pond.

PIPL Site Activity: 0 Pairs

PIPL Site Productivity: 0.0

Pine Neck This year one pair nested and was predated. The pair did not re-nest. There were no Least terns and 2 Seabeach Knotweed plants were located.

PIPL Site Activity: 1 Pair, 0 Fledges

PIPL Site Productivity: 0.0

Long Beach is one of the more difficult sites to manage. Approximately one mile long, the site is a public beach run by the towns' Department of Parks and Recreation. The high level of human activity is a major threat to the nesting shorebirds at this site. Long Beach is particularly crowded on weekends and holidays. Another threat to nesting at this location is predators such as gulls, crows and unleashed dogs. The parking lot also runs parallel to the

beach, making it difficult to prohibit beach driving once chicks are present. No Piping Plovers nested here this year or Least Terns. 643 Seabeach Knotweed plants were counted.

PIPL Site Activity: 0 Pair, 0 Fledges

PIPL Site Productivity: 0.0

Short Beach does not contend with a lot of the problems faced by Long Beach.

Although relatively close, few beachgoers are found here and the use of recreational vehicles is not a concern as the access is blocked by pilings. In addition, there are limited homes located here. Unfortunately, the presence of predators, specifically crows, is an extremely large issue. No piping plovers were recorded at this site.

No least terns or Seabeach amaranth were located at this site. There were 567 Seabeach Knotweed plants recorded.

PIPL Site Activity: 0 Pair, 0 Fledges

PIPL Site Productivity: 0.0

Genet Creek a small private beach un-accessible to ORV. This site remained inactive this season

PIPL Site Activity: 0 Pairs, 0 Fledges

PIPL Site Productivity: 1.0

Middle Pond is the only site located along the Shinnecock Bay System. It is a narrow, secluded beach that is not frequently used and there is no access for ORV's. This season there were no nesting Piping plovers but there was a small Least tern colony. No Seabeach Knotweed plants were counted here.

PIPL Site Activity: 0 Pairs

PIPL Site Productivity: 0

PIPL Nests and Chicks:

For the 2015 season, 28 breeding piping plover pairs produced 31 nests (including re-nests). Within those nests were a total of 117 eggs, out of which 82 (70.1%) successfully hatched.

Acknowledgements

We at the Southampton Town Board of Trustees would like to thank all those individuals who helped make the 2015 Threatened and Endangered Species Program a success. Thank you to the Marine Maintenance Division, the Southampton Town Bay Constables, Joe Janssen of the Nature Conservancy, Steve Sinkevich and Steve Papa of USFW, Chip Hamilton and Michelle Gibbons of the NYSDEC, James Gormley and Ross Baldwin with the Towns GIS Dept.

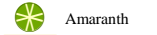


Prepared by:
Town of Southampton Division of Geographic
Information Systems December 2015

HAMPTON BEACH

Village of Quogue

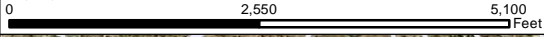
2014 Aerial Imagery



Amaranth



Least Tern Colony



Least Tern Colonies and Seabeach Amaranth Locations shown by this map are approximate. For actual locations please contact the Town of Southampton Trustees



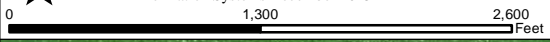


Prepared by:
Town of Southampton Division of Geographic
Information Systems December 2015

TIANA BEACH

Hampton Bays

2014 Aerial Imagery



Least Tern Colonies and Seabeach Amaranth Locations show by this map are approximate. For actual locations please contact the Town of Southampton Trustees



CANOE PLACE BEACH

Hampton Bays



2014 Aerial Imagery



Least Tern Colonies and Seabeach Amaranth Locations show by this map are approximate. For actual locations please contact the Town of Southampton Trustees



Great Peconic Bay

Shinnecock Canal

SUNSET AVE

BAYVIEW AVE

SHINNECOCK PL

HAMPTON PL

PINE TREE PL

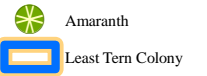
62



Prepared by:
Town of Southampton Division of Geographic
Information Systems December 2015

FAIRFIELD POND LANE BEACH (EAST)

2014 Aerial Imagery



0 650 1,300 Feet

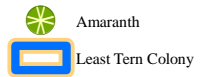
Peter's Pond Ln to Town line Rd
 ★ 2011 ★ 2012 ★ 2013 ★ 2014 ★ 2015

Least Tern Colonies and Seabeach Amaranth Locations show by this map are approximate. For actual locations please contact the Town of Southampton Trustees



FAIRFIELD POND LANE BEACH (WEST)

2014 Aerial Imagery



Prepared by:
Town of Southampton Division of Geographic
Information Systems December 2015

0 500 1,000 Feet

A north arrow points towards the top-left. Below it is a scale bar with markings at 0, 500, and 1,000 feet.

Gibson Ln to Peter's Pond

★ 2011 ★ 2012 ★ 2013 ★ 2014 ★ 2015

Least Tern Colonies and Seabeach Amaranth Locations show by this map are approximate. For actual locations please contact the Town of Southampton Trustees



FISH COVE / NORTH SEA HARBOR

2014 Aerial Imagery



Prepared by:
Town of Southampton Division of Geographic
Information Systems December 2015

0 1,150 2,300 Feet

North Sea

- ★ 2011
- ★ 2012
- ★ 2013
- ★ 2014
- ★ 2015

Least Tern Colonies and Seabeach Amaranth Locations show by this map are approximate. For actual locations please contact the Town of Southampton Trustees





Prepared by:
Town of Southampton Division of Geographic
Information Systems December 2015

FRESH POND

Bulkhead to Lake Dr.

2014 Aerial Imagery



Amaranth



Least Tern Colony

★ 2011 ★ 2012 ★ 2013 ★ 2014 ★ 2015

0 330 660 Feet

Least Tern Colonies and Seabeach Amaranth Locations show by this map are approximate. For actual locations please contact the Town of Southampton Trustees





Prepared by:
Town of Southampton Division of Geographic
Information Systems December 2015

GENET CREEK

North Haven

2014 Aerial Imagery



0 462.5 925 Feet

★ 2011 ★ 2012 ★ 2013 ★ 2014 ★ 2015

Least Tern Colonies and Seabeach Amaranth Locations show by this map are approximate. For actual locations please contact the Town of Southampton Trustees



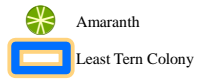


Prepared by:
Town of Southampton Division of Geographic
Information Systems December 2015

GIN LANE BEACH (VILLAGE)

South Main St to Old Town Rd

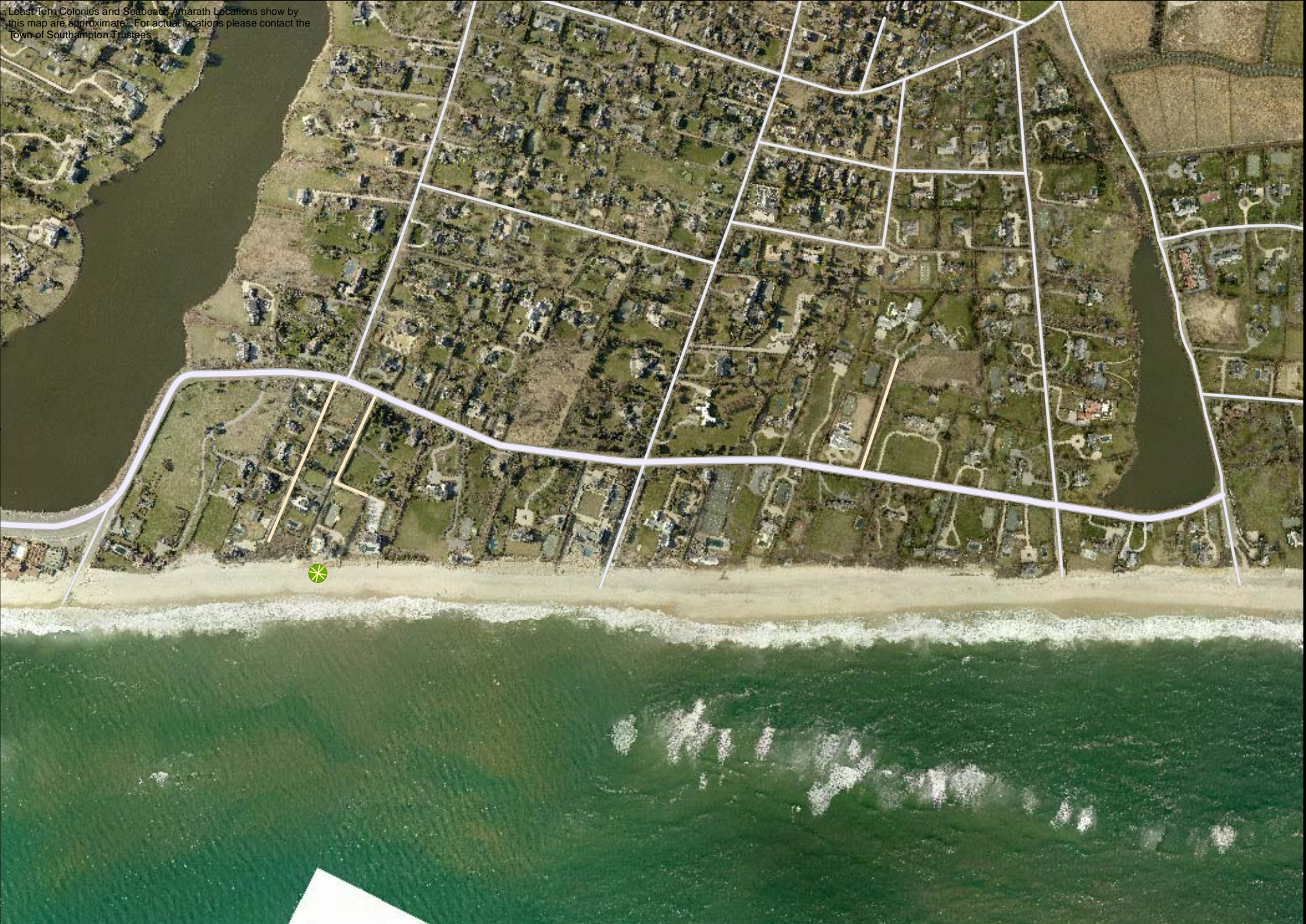
2014 Aerial Imagery



★ 2011 ★ 2012 ★ 2013 ★ 2014 ★ 2015

0 875 1,750 Feet

Least Tern Colonies and Seabird Amaranth Locations show by this map are approximate. For actual locations please contact the Town of Southampton Trustees.

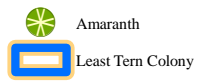


LONG BEACH

Noyac / Sag Harbor

★ 2011 ★ 2012 ★ 2013 ★ 2014 ★ 2015

2014 Aerial Imagery



Least Tern Colonies and Seabeach Amaranth Locations show by this map are approximate. For actual locations please contact the Town of Southampton Trustees



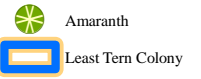


Prepared by:
Town of Southampton Division of Geographic
Information Systems December 2015

MESCHUTT BEACH

Hampton Bays

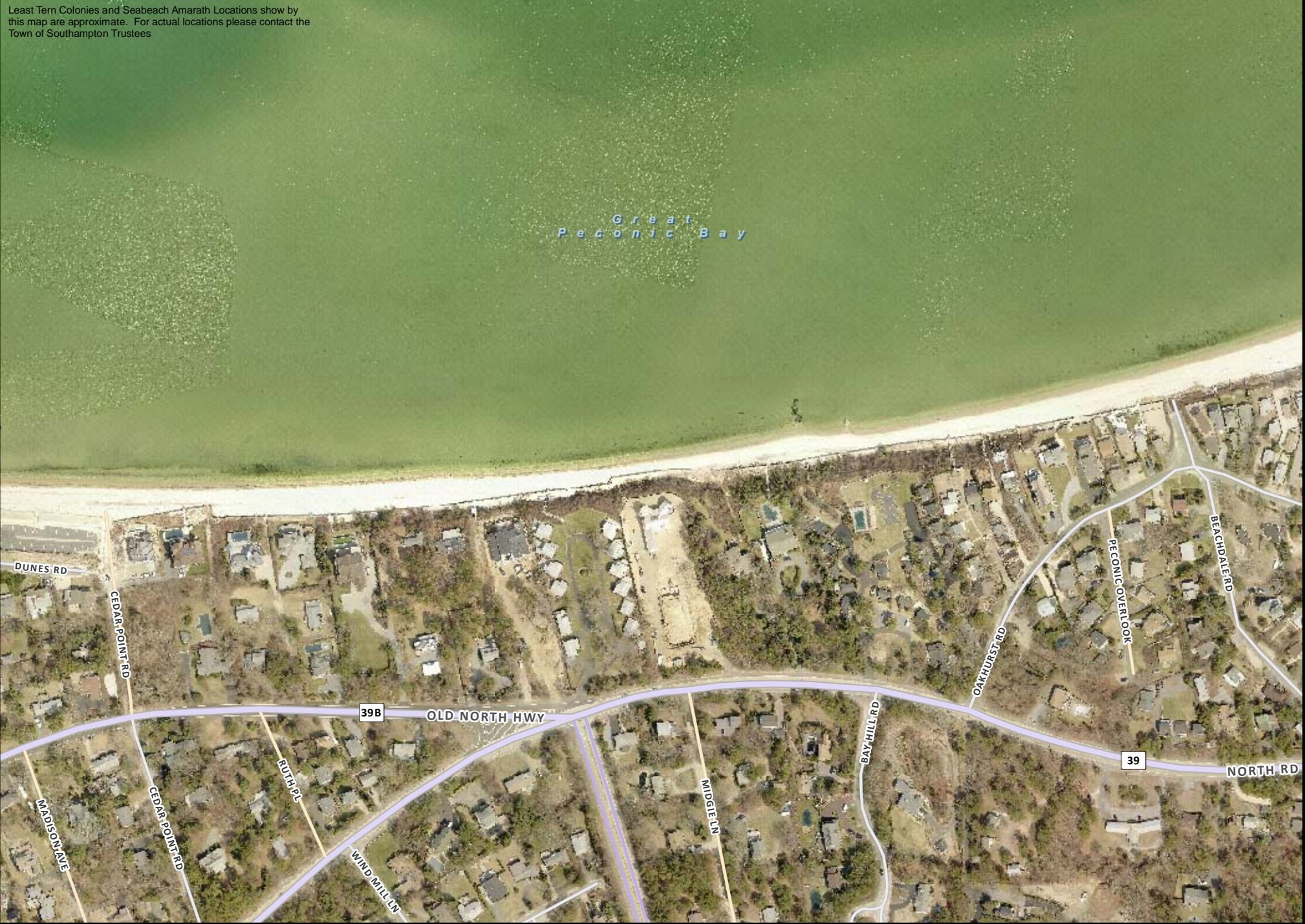
2014 Aerial Imagery



★ 2011 ★ 2012 ★ 2013 ★ 2014 ★ 2015

0 375 750 Feet

Least Tern Colonies and Seabeach Amaranth Locations show by this map are approximate. For actual locations please contact the Town of Southampton Trustees

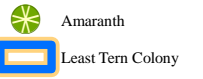




Prepared by:
Town of Southampton Division of Geographic
Information Systems December 2015

MIDDLE POND Shinnecock Hills

2014 Aerial Imagery



★ 2011 ★ 2012 ★ 2013 ★ 2014 ★ 2015

0 550 Feet

Least Tern Colonies and Seabeach Amaranth Locations show by this map are approximate. For actual locations please contact the Town of Southampton Trustees



Far Pond

FAR POND RD

BAYBERRY COVE LN

Honey Pot

Middle Pond


Shinnecock Bay East

OLD TOWN ROAD (VILLAGE)

Old Town Rd to Fowlers St

★ 2011 ★ 2012 ★ 2013 ★ 2014 ★ 2015

2014 Aerial Imagery

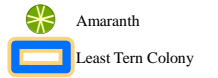
 Amaranth
 Least Tern Colony

Least Tern Colonies and Seabeach Amaranth Locations show by this map are approximate. For actual locations please contact the Town of Southampton Trustees



PINE NECK / MILL CREEK

2014 Aerial Imagery

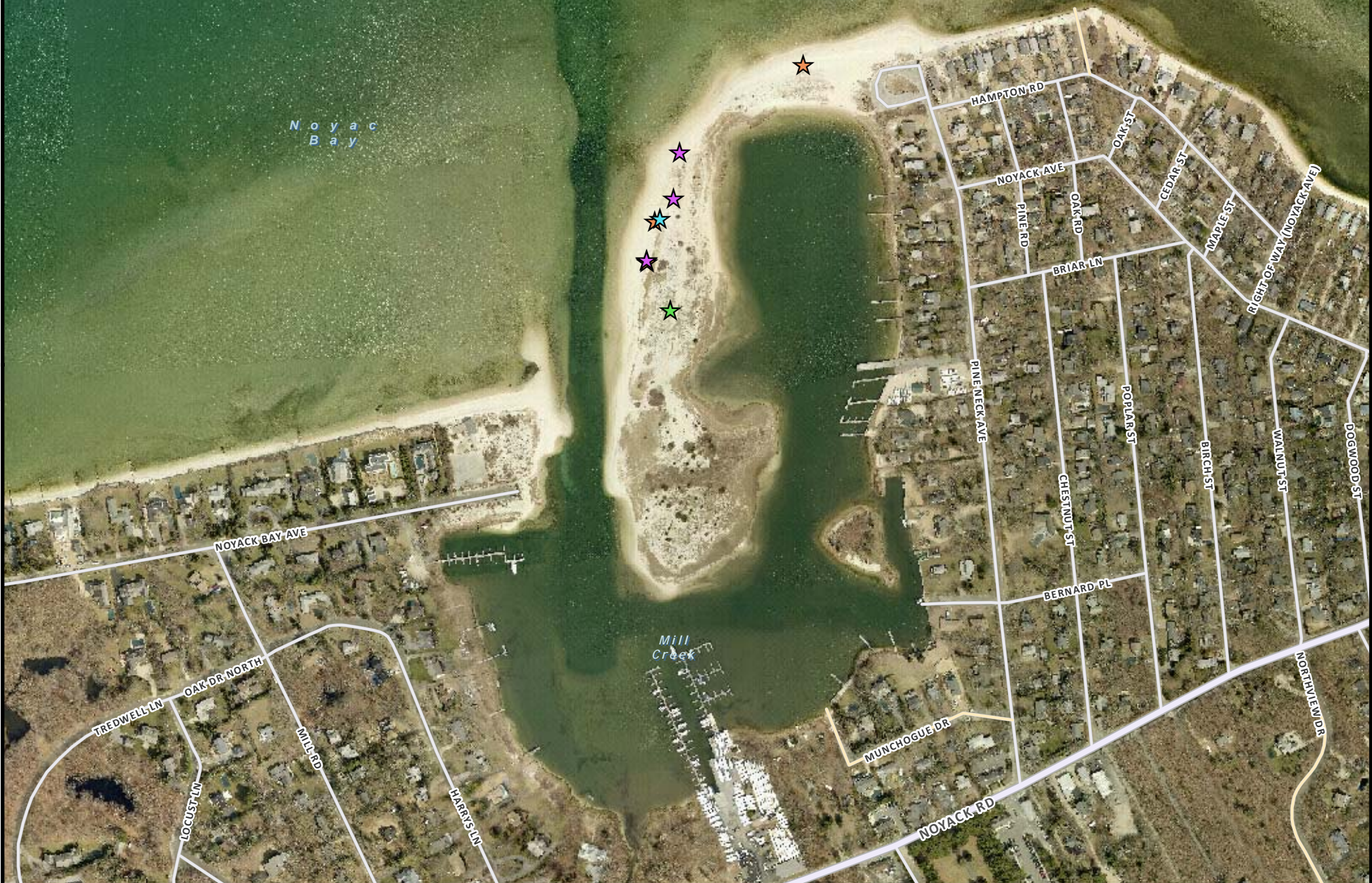


Prepared by:
Town of Southampton Division of Geographic
Information Systems December 2015

0 500 1,000 Feet

Noyac
★ 2011 ★ 2012 ★ 2013 ★ 2014 ★ 2015

Least Tern Colonies and Seabeach Amaranth Locations show by this map are approximate. For actual locations please contact the Town of Southampton Trustees

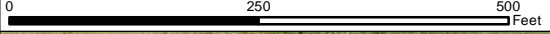
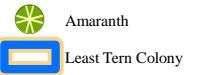




Prepared by:
Town of Southampton Division of Geographic
Information Systems December 2015

RED CEDAR POINT

2014 Aerial Imagery



Least Tern Colonies and Seabeach Amaranth Locations show by this map are approximate. For actual locations please contact the Town of Southampton Trustees



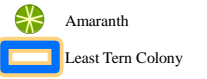


Prepared by:
Town of Southampton Division of Geographic
Information Systems December 2015

RED CREEK POND

Hampton Bays

2014 Aerial Imagery



★ 2011 ★ 2012 ★ 2013 ★ 2014 ★ 2015

0 320 640 Feet

Least Tern Colonies and Seabeach Amaranth Locations show by this map are approximate. For actual locations please contact the Town of Southampton Trustees



Great Peconic Bay

Red Creek Pond

Fourniers Pond

RED CREEK PARK

GATHERING ROCKS RD



Prepared by:
Town of Southampton Division of Geographic
Information Systems December 2015

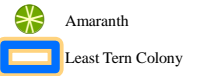
0 450 900 Feet

ROSES GROVE

Peconic Bay Ave to Oak Grove Rd

★ 2011 ★ 2012 ★ 2013 ★ 2014 ★ 2015

2014 Aerial Imagery

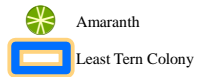


Least Tern Colonies and Seabeach Amaranth Locations show by this map are approximate. For actual locations please contact the Town of Southampton Trustees



SAGAPONACK LAKE (EAST)

2014 Aerial Imagery



Prepared by:
Town of Southampton Division of Geographic
Information Systems December 2015
650 1,300 Feet

★ 2011 ★ 2012 ★ 2013 ★ 2014 ★ 2015

Least Tern Colonies and Seabeach Amaranth Locations show by this map are approximate. For actual locations please contact the Town of Southampton Trustees



SAGAPONACK LAKE (WEST)

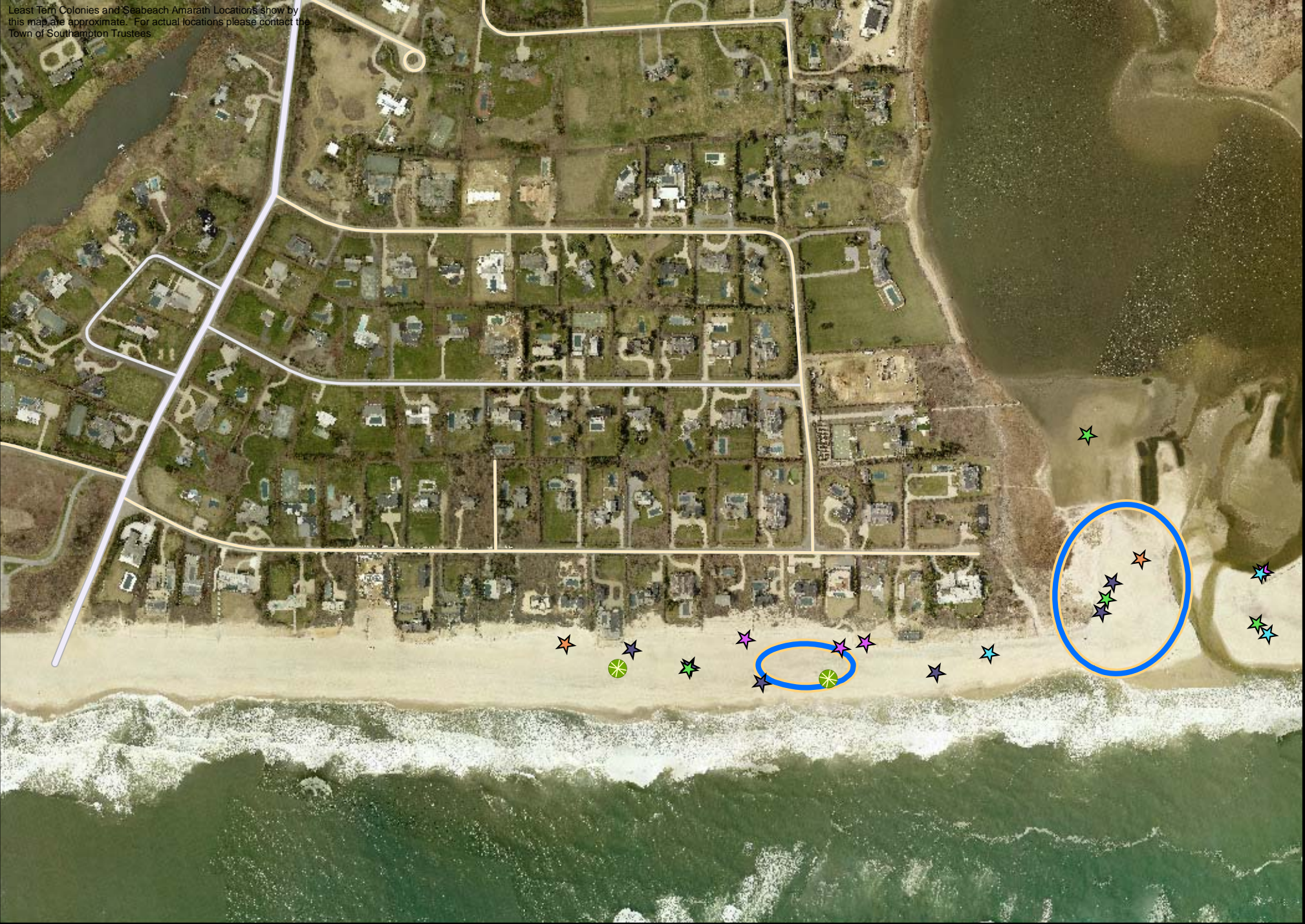
Ocean Rd to Surfside Dr

★ 2011 ★ 2012 ★ 2013 ★ 2014 ★ 2015

2014 Aerial Imagery

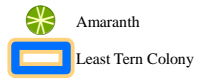
● Amaranth
□ Least Tern Colony

Least Tern Colonies and Seabeach Amaranth Locations show by this map are approximate. For actual locations please contact the Town of Southampton Trustees



SAM'S CREEK / MECOX BEACH

2014 Aerial Imagery



Prepared by:
Town of Southampton Division of Geographic
Information Systems December 2015

0 500 1,000 Feet

★ 2011 ★ 2012 ★ 2013 ★ 2014 ★ 2015

Least Tern Colonies and Seabeach Amaranth Locations show by this map are approximate. For actual locations please contact the Town of Southampton Trustees



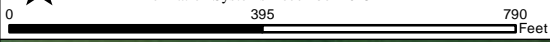


Prepared by:
Town of Southampton Division of Geographic
Information Systems December 2015

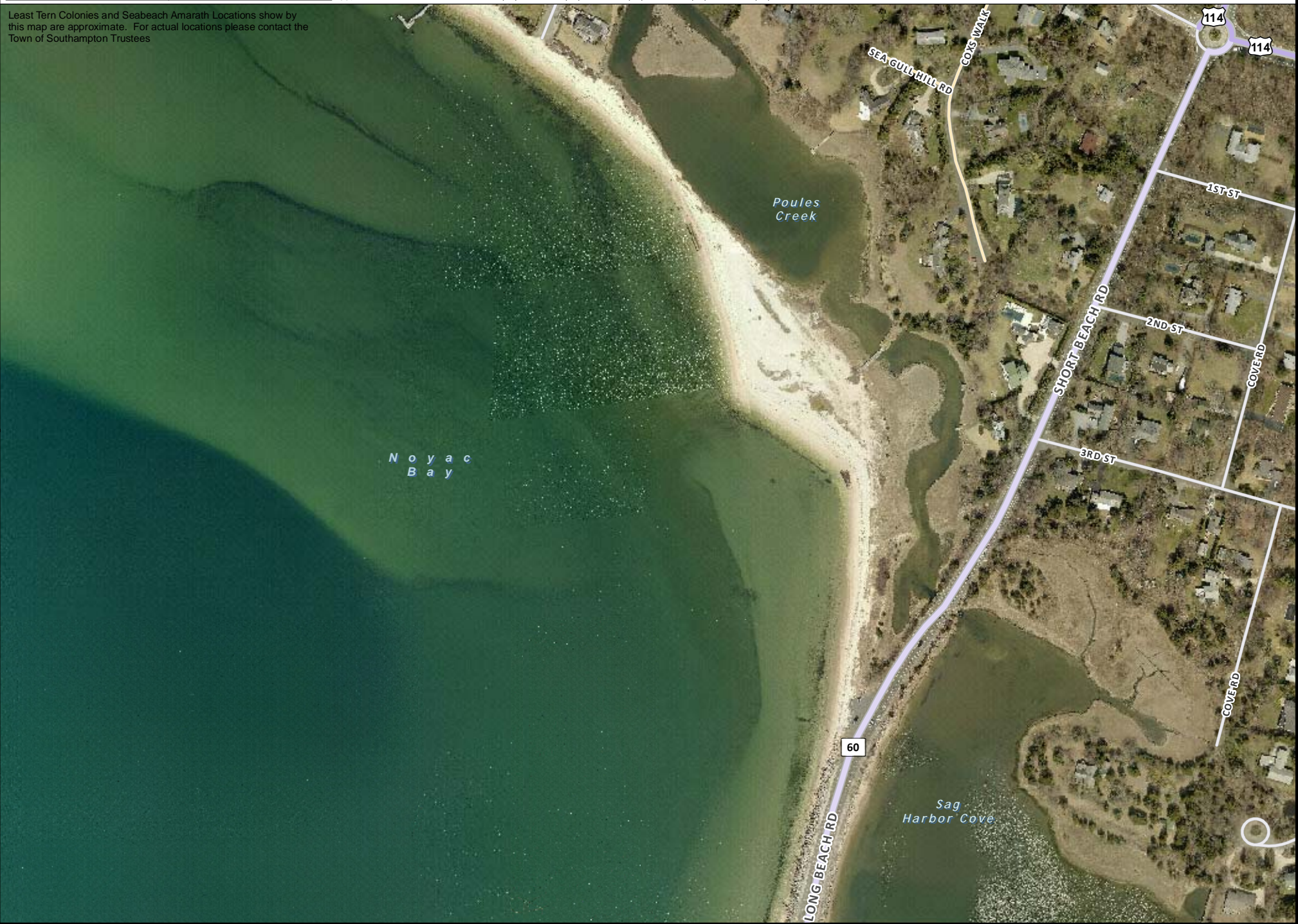
SHORT BEACH

North Haven / Noyac

2014 Aerial Imagery

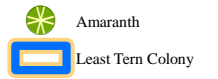


Least Tern Colonies and Seabeach Amaranth Locations show by this map are approximate. For actual locations please contact the Town of Southampton Trustees



SOUTHAMPTON BEACH (VILLAGE)

2014 Aerial Imagery



Prepared by:
Town of Southampton Division of Geographic
Information Systems December 2015

0 1,250 2,500 Feet

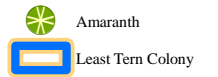
★ 2011 ★ 2012 ★ 2013 ★ 2014 ★ 2015

Least Tern Colonies and Seabeach Amaranth Locations show by this map are approximate. For actual locations please contact the Town of Southampton Trustees



SOUTHAMPTON BEACH (VILLAGE)

2014 Aerial Imagery



Road D to Halsey Neck Lane

★ 2011 ★ 2012 ★ 2013 ★ 2014 ★ 2015

Prepared by:
Town of Southampton Division of Geographic
Information Systems December 2015

0 1,350 2,700 Feet

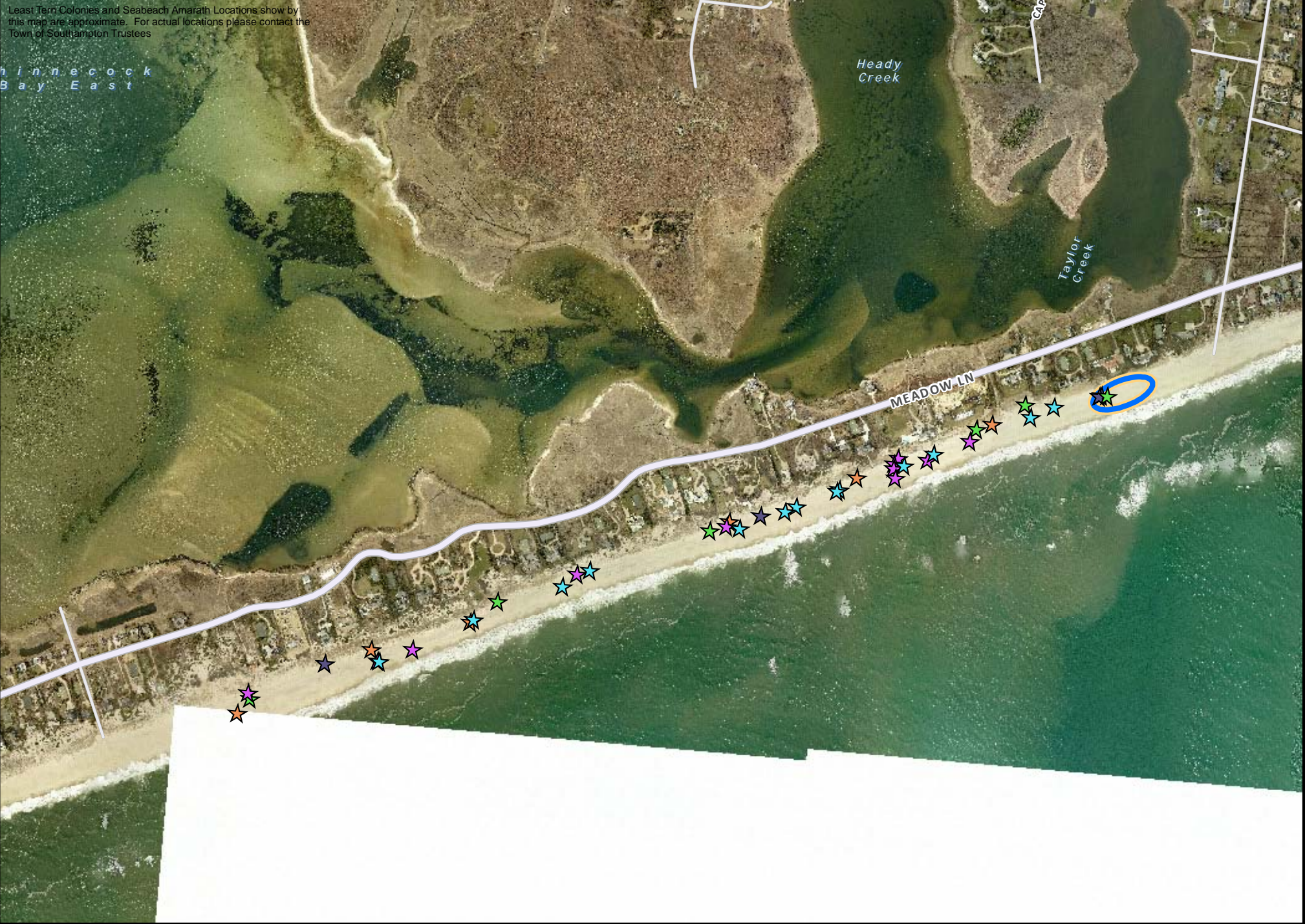
Least Tern Colonies and Seabeach Amaranth Locations show by this map are approximate. For actual locations please contact the Town of Southampton Trustees

Winnecock Bay East

Heady Creek

Taylor Creek

MEADOW LN





Prepared by:
Town of Southampton Division of Geographic
Information Systems December 2015
875

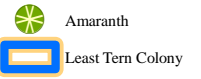
1,750
Feet

SOUTHAMPTON BEACH (VILLAGE)

Halsey Neck Lane to S Main St

★ 2011 ★ 2012 ★ 2013 ★ 2014 ★ 2015

2014 Aerial Imagery



Least Tern Colonies and Seabeach Amaranth Locations show by this map are approximate. For actual locations please contact the Town of Southampton Trustees



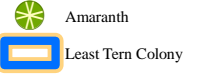


Prepared by:
Town of Southampton Division of Geographic
Information Systems December 2015

SQUIRES POND

Hampton Bays

2014 Aerial Imagery



Least Tern Colonies and Seabeach Amaranth Locations show by this map are approximate. For actual locations please contact the Town of Southampton Trustees

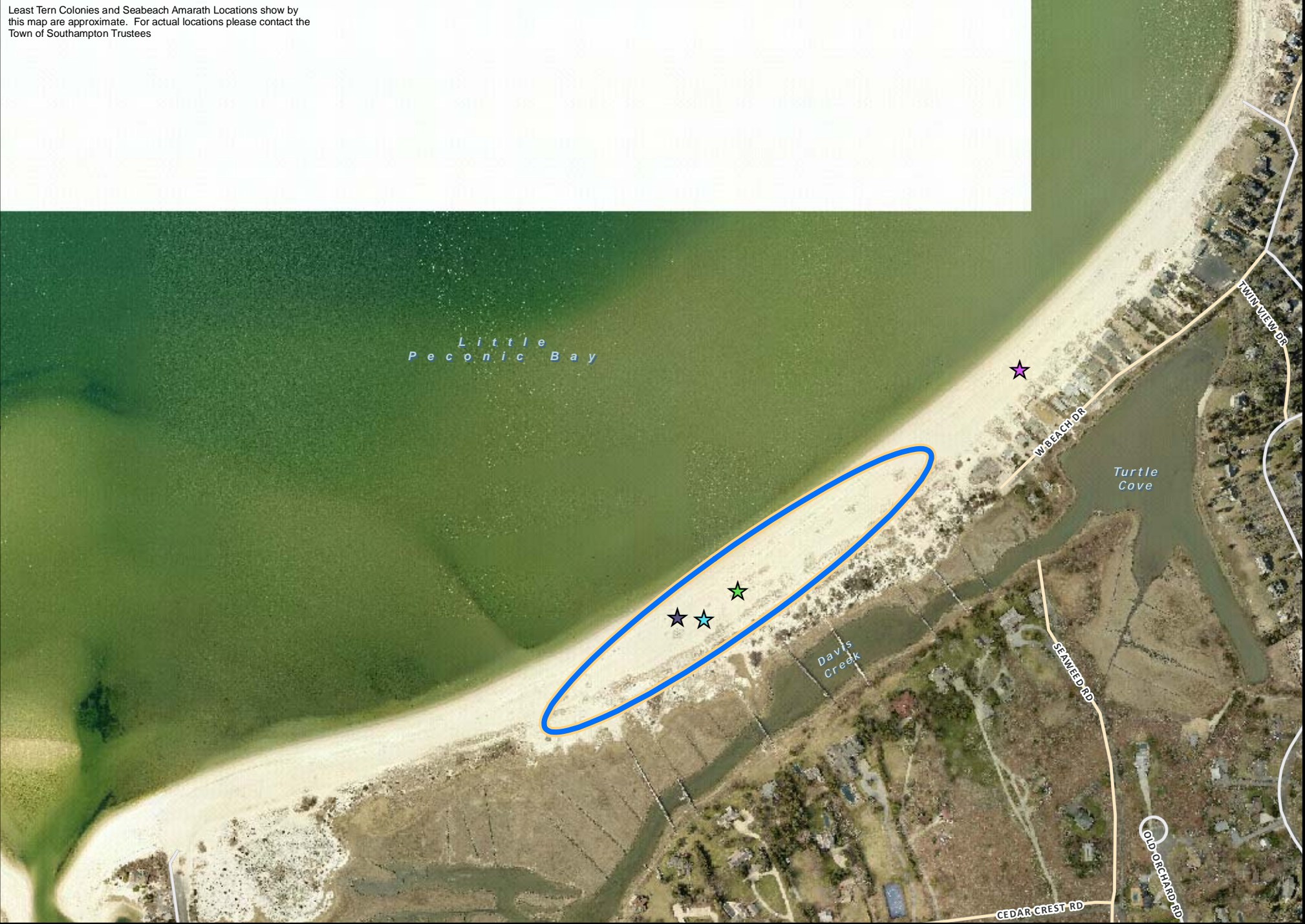


TOWD NECK (EAST)

East Towd Point (Inlet) to Scotts Landing Rd

★ 2011 ★ 2012 ★ 2013 ★ 2014 ★ 2015

Least Tern Colonies and Seabeach Amaranth Locations show by this map are approximate. For actual locations please contact the Town of Southampton Trustees

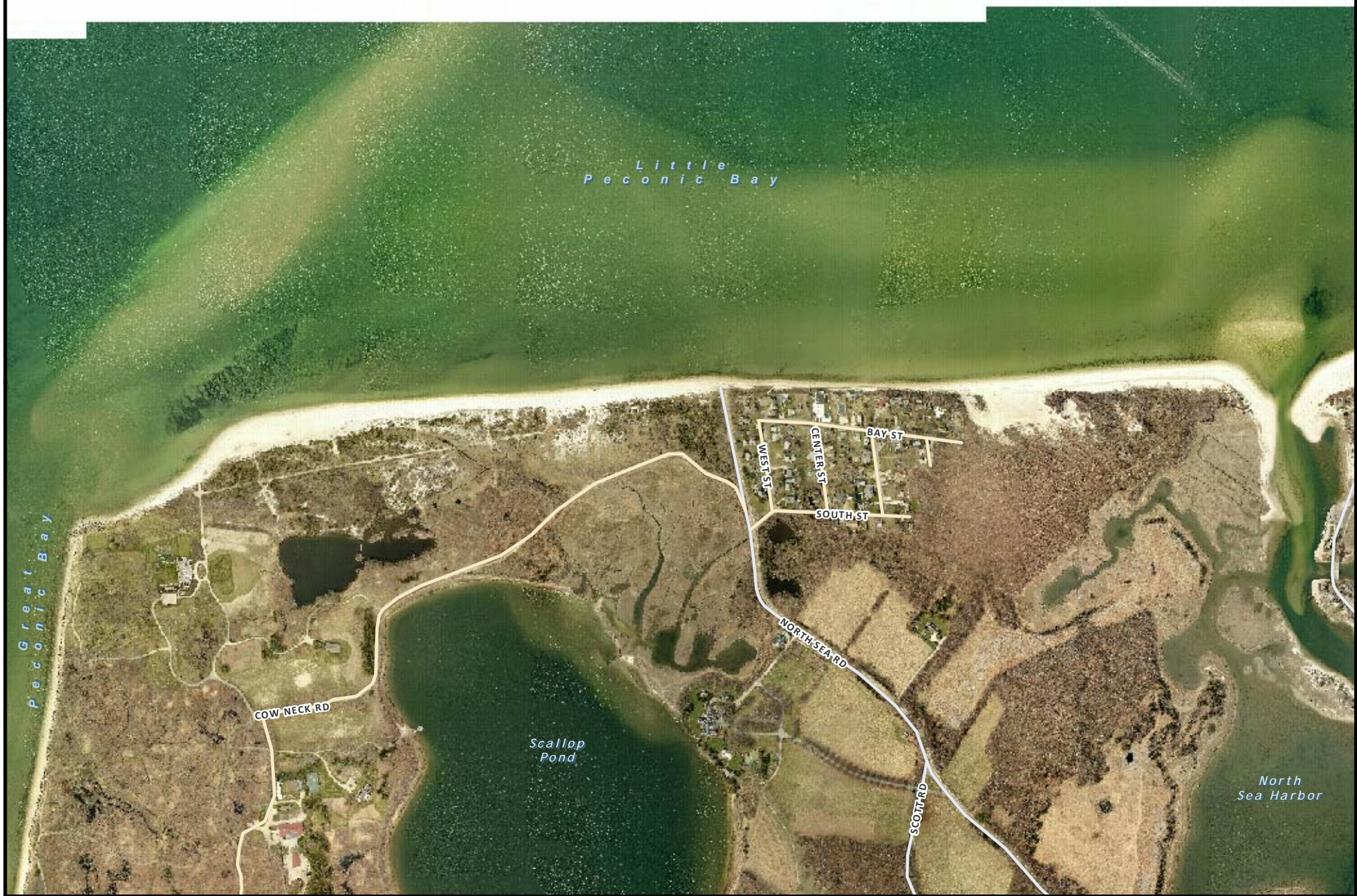


TOWD NECK (WEST)

West Cow Neck Point to Towd Point

★ 2011 ★ 2012 ★ 2013 ★ 2014 ★ 2015

Least Tern Colonies and Seabeach Amaranth Locations show by this map are approximate. For actual locations please contact the Town of Southampton Trustees



WATER MILL BEACH

Dune Rd to Jobs Ln

2014 Aerial Imagery

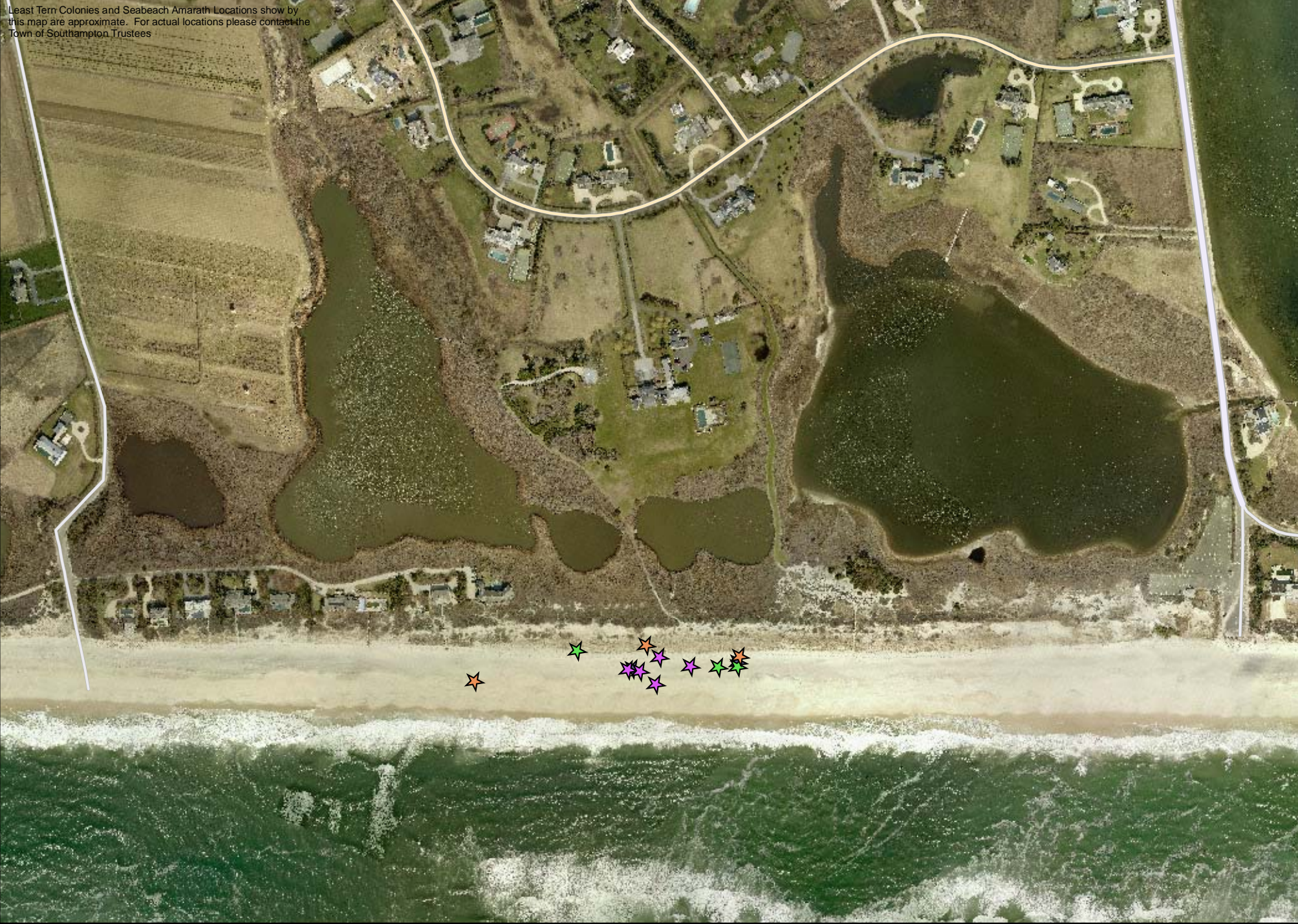


★ 2011 ★ 2012 ★ 2013 ★ 2014 ★ 2015

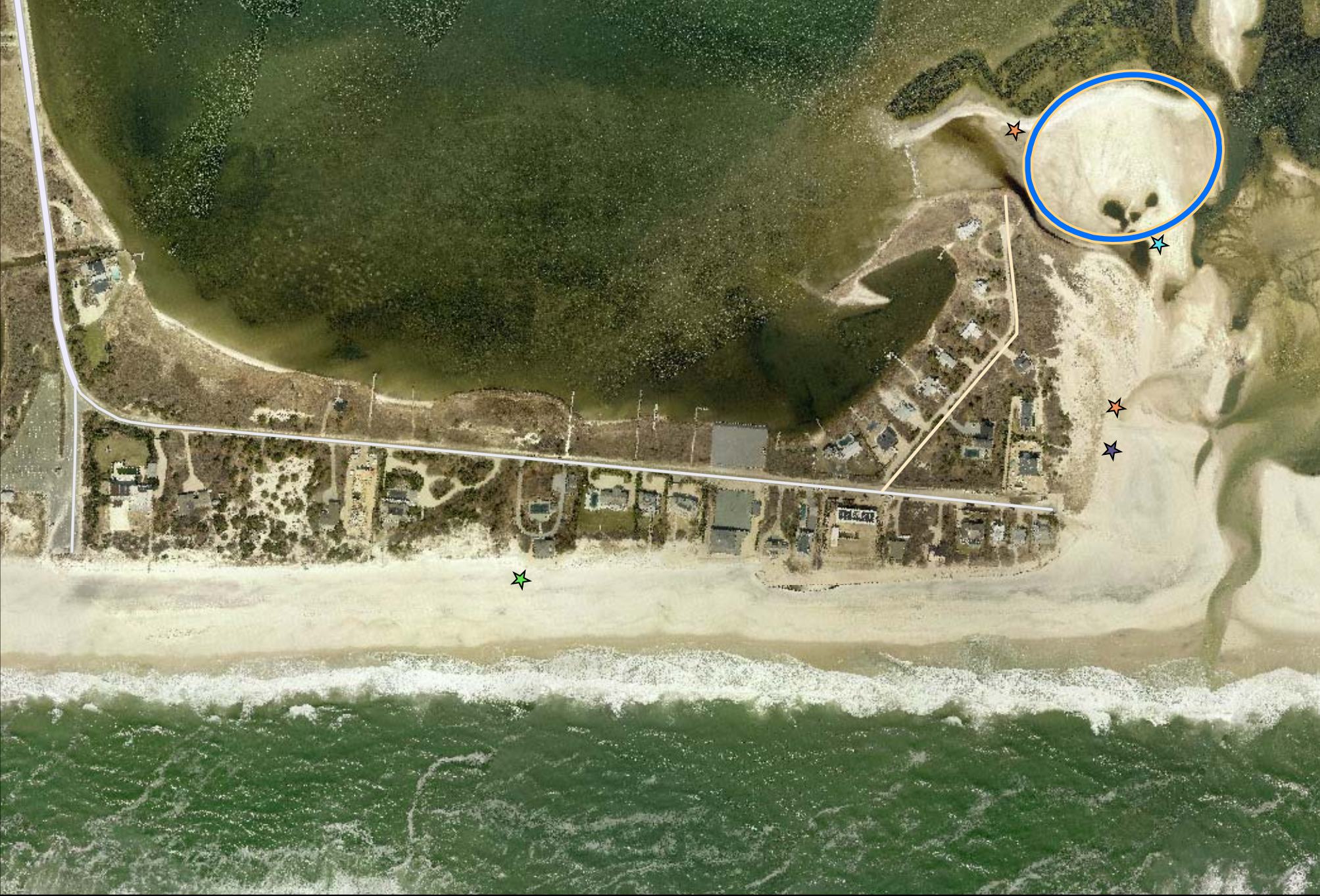
Least Tern Colonies and Seabeach Amaranth Locations show by this map are approximate. For actual locations please contact the Town of Southampton Trustees.



Least Tern Colonies and Seabeach Amaranth Locations show by this map are approximate. For actual locations please contact the Town of Southampton Trustees



Least Tern Colonies and Seabeach Amaranth Locations shown on this map are approximate. For actual locations please contact the Town of Southampton Trustees.





Prepared by:
Town of Southampton Division of Geographic
Information Systems December 2015

162.5

325
Feet

WOOLEY POND (EAST)

East/North Point to Peconic Bay Ave

★ 2011 ★ 2012 ★ 2013 ★ 2014 ★ 2015

2014 Aerial Imagery



Amaranth



Least Tern Colony

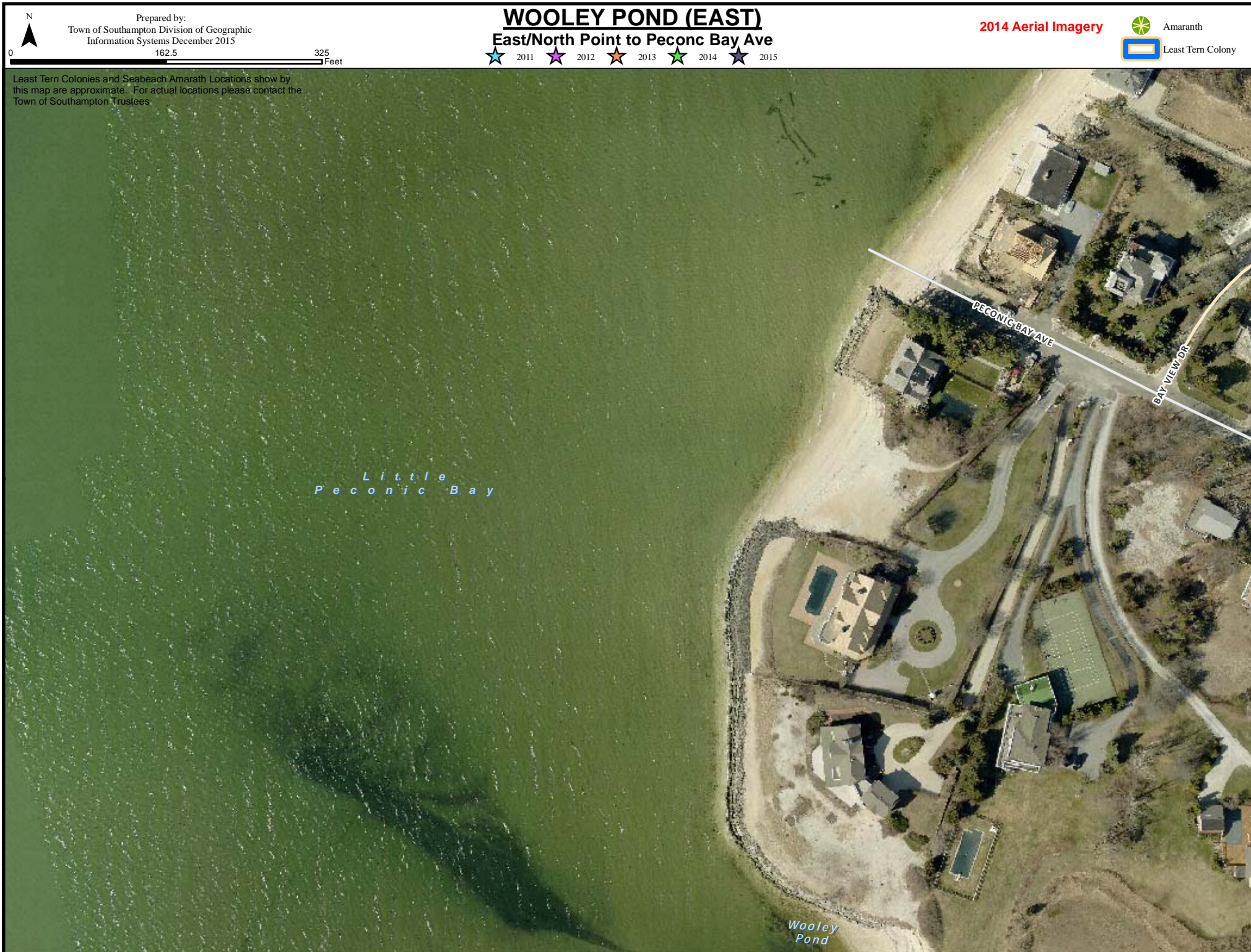
Least Tern Colonies and Seabeach Amaranth Locations show by this map are approximate. For actual locations please contact the Town of Southampton Trustees

Little
Peconic Bay

Wooley
Pond

PECONIC BAY AVE

BAY VIEW DR






Prepared by:
Town of Southampton Division of Geographic
Information Systems December 2015


WOOLEY POND (WEST)

West Scotts Landing to Bulkhead

★ 2011 ★ 2012 ★ 2013 ★ 2014 ★ 2015

2014 Aerial Imagery

 Amaranth

 Least Tern Colony

0 300 600 Feet

Least Tern Colonies and Seabeach Amaranth Locations show by this map are approximate. For actual locations please contact the Town of Southampton Trustees

Little
Peconic Bay

EAST BEACH DR

Wooley
Pond

