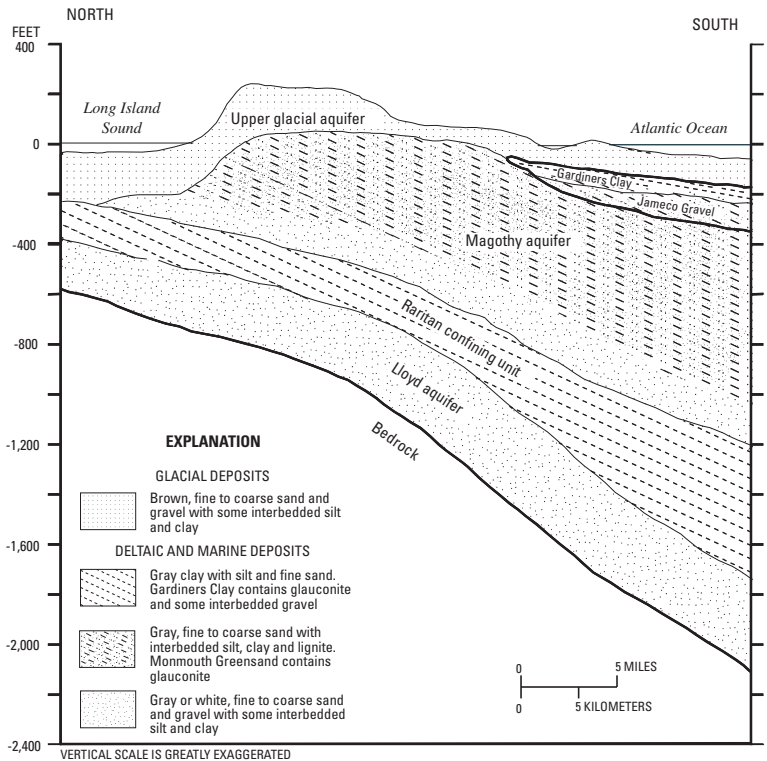


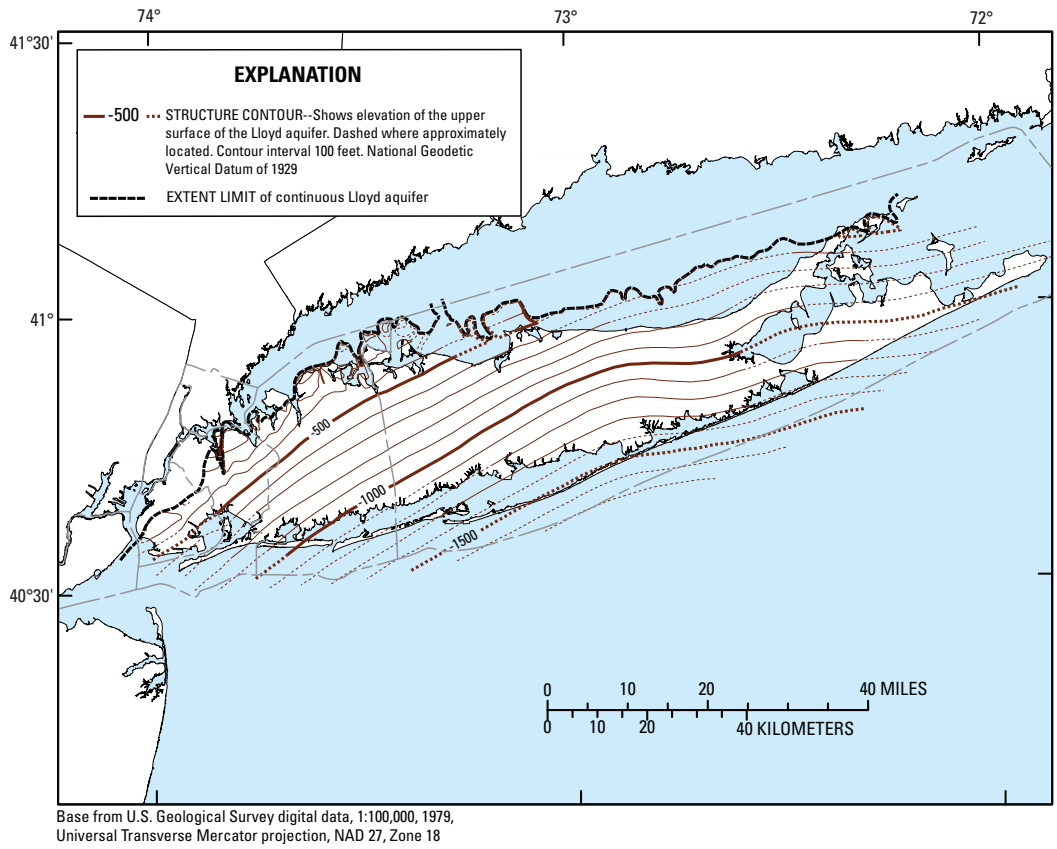
---

**APPENDIX H  
GEOLOGICAL CROSS SECTION AND LLOYD AQUIFER  
SURFACE ELEVATION MAP IN FEET BELOW MEAN  
SEA LEVEL**

---



**Figure 2.** Cross section showing lithology of major hydrogeologic units along a generalized north-south section through the ground-water system of Long Island, N.Y. (Section represents an area near the Nassau-Suffolk County border.) (Modified from McClymonds and Franke, 1972, fig. 3)



**Figure 3.** Extent and elevation of the upper surface of the Lloyd aquifer on Long Island, N.Y. (Modified from Smolensky and others, 1989)