

Town of Southampton
and
New York Department of State



Riverside Hamlet Revitalization

Figure 2-1
Location Map

Legend

 Study Area

Source: ESRI



1 inch = 800 feet



Sources: Esri, HERE, DeLorme, USGS, Intermap, increment P Corp., NRCAN, Esri Japan, METI, Esri China (Hong Kong), Esri (Thailand), TomTom, MapmyIndia, © OpenStreetMap contributors, and the GIS User Community



Riverside Hamlet Revitalization

Figure 2-2
2013 Aerial Photograph

Legend

- Study Area
- Tax Parcels

Source: NYSGIS, 2013

1 inch = 500 feet









Figure 2-3
Proposed ROD Zoning

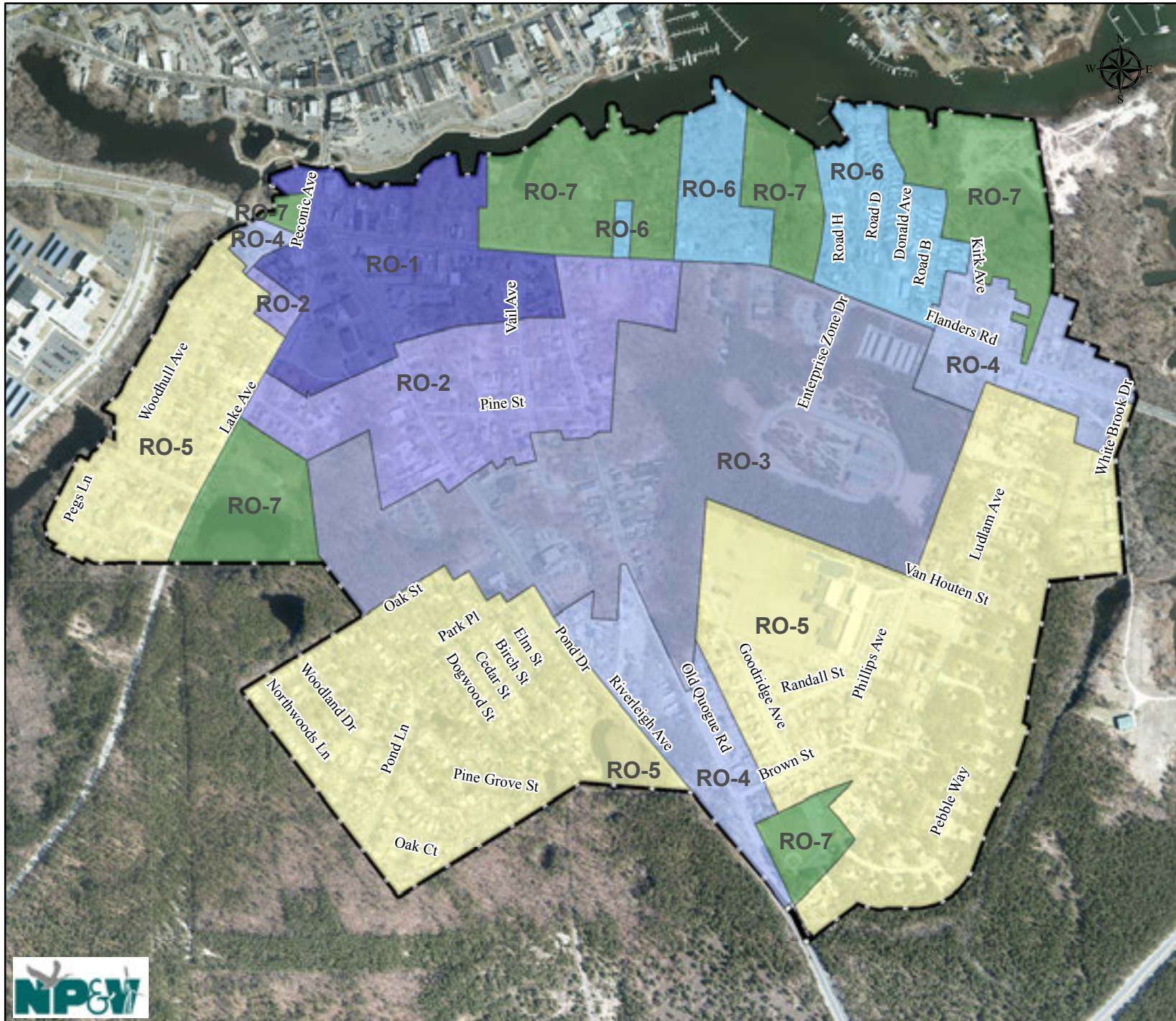
Legend

Proposed Overlay Zones

-  RO-1
-  RO-2
-  RO-3
-  RO-4
-  RO-5
-  RO-6
-  RO-7
-  Study Area

Source: ROD Zoning Code
NYS GIS 2013 Aerial

0 800
Feet
1 inch = 800 feet





Riverside Hamlet Revitalization

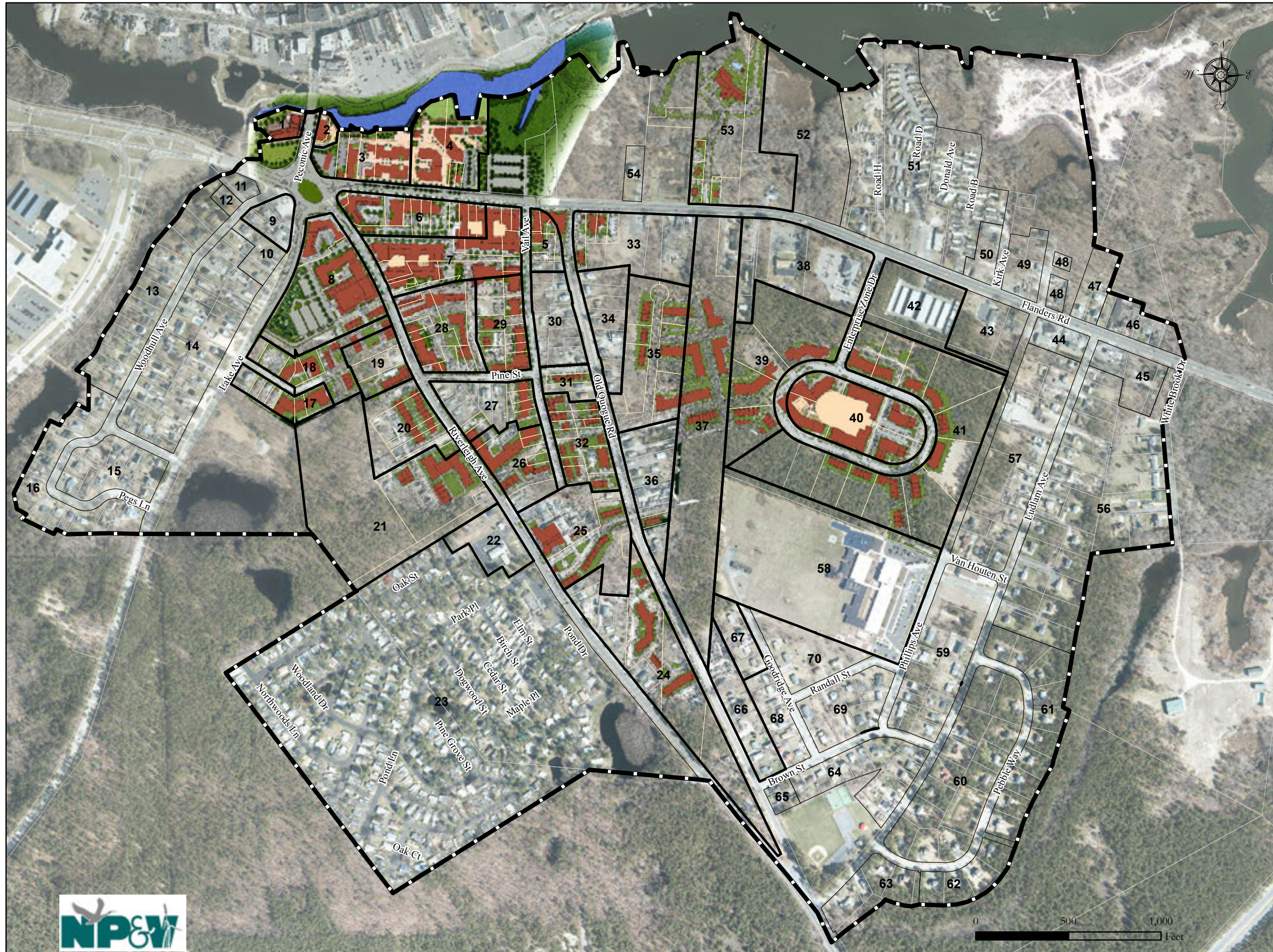
Figure 2-4
Theoretical Development Program

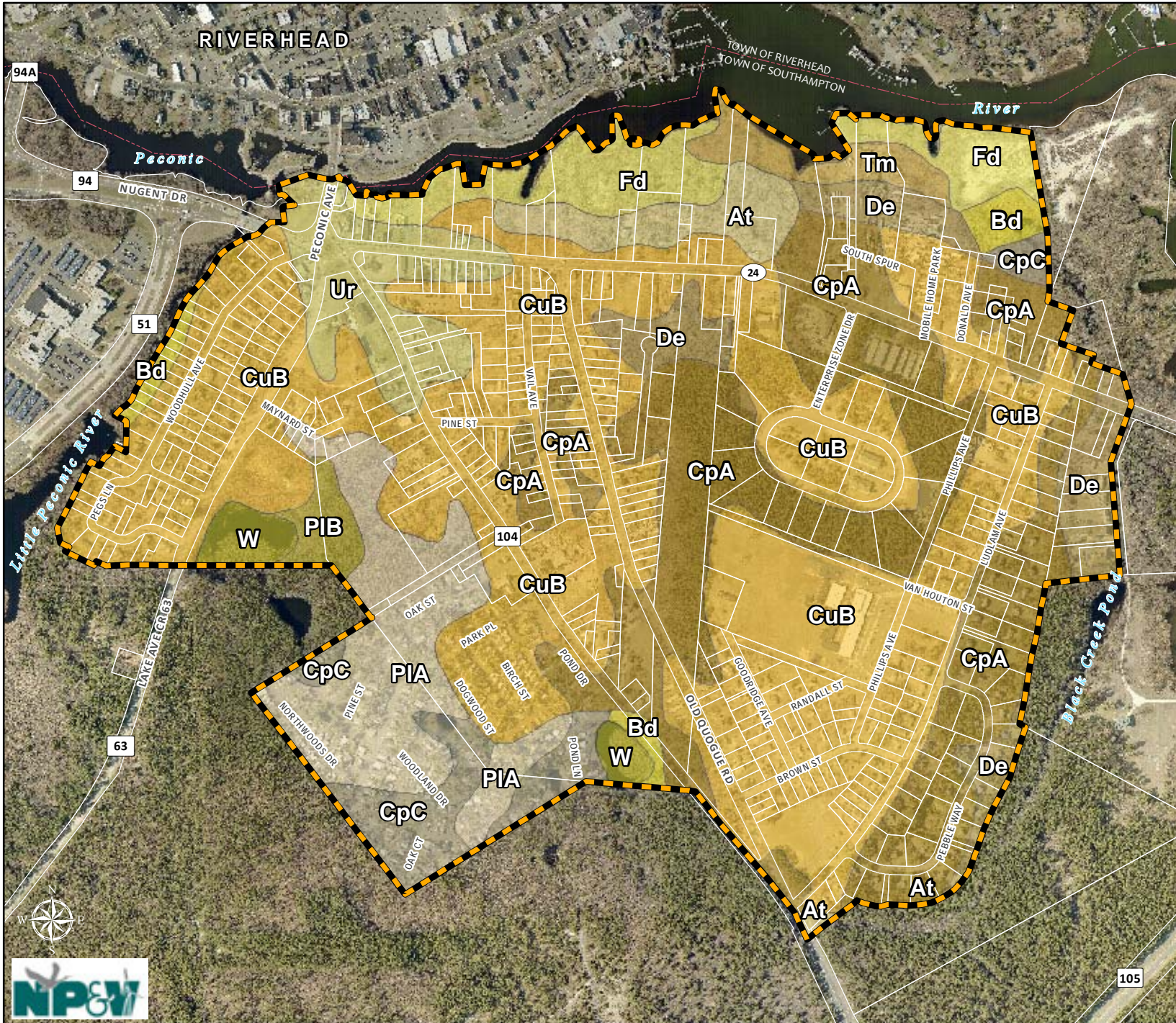
Legend

- Study Area
- Blocks**
- Outside Program Area
- Inside Program Area
- Development Program Parcels
- Tax Parcels

Source: Renaissance Downtowns Plan;
SC Real Property,
NYSGIS, 2013

1 inch = 500 feet






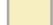







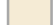


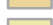
Town of Southampton
and
New York Department of State



Riverside Hamlet Revitalization

Figure 3-1
Soil Classifications

Legend

-  Study Area
- Soil Classification (SSURGO - USDA, NRCS)**
-  Atsion sand (At)
-  Berryland mucky sand (Bd)
-  Carver and Plymouth sands, 0 to 3 percent slopes (CpA)
-  Carver and Plymouth sands, 3 to 15 percent slopes (CpC)
-  Cut and fill land, gently sloping (CuB)
-  Deerfield sand (De)
-  Fill land, dredged material (Fd)
-  Plymouth loamy sand, 0 to 3 percent slopes (PIA)
-  Plymouth loamy sand, 3 to 8 percent slopes (PIB)
-  Tidal marsh (Tm)
-  Urban land (Ur)
-  Water (W)

2014 Aerial Imagery

Prepared By:
The Town of Southampton Division
of Geographic Information Systems
Date: Thursday, October 01, 2015










Town of Southampton
and
New York Department of State



Riverside Hamlet Revitalization

Figure 3-2
Topography

- Legend**
-  Study Area
 - 5 Ft Contour**
 -  5FT Contours
 -  25FT Contours
 -  5FT Depression Contours
 -  25FT Depression Contours

2014 Aerial Imagery

Prepared By:
The Town of Southampton Division
of Geographic Information Systems
Date: Thursday, August 20, 2015





Town of Southampton
and
New York Department of State



Riverside Hamlet Revitalization

Figure 4-1
New York State
Wild, Scenic and
Recreational Rivers

Legend

Study Area

New York State Wild, Scenic and Recreational Rivers

Community

Recreational

2014 Aerial Imagery

Prepared By:
The Town of Southampton Division
of Geographic Information Systems
Date: Thursday, September 03, 2015

0 1,000
 Feet



Figure 4-2
New York State Wetlands

Legend

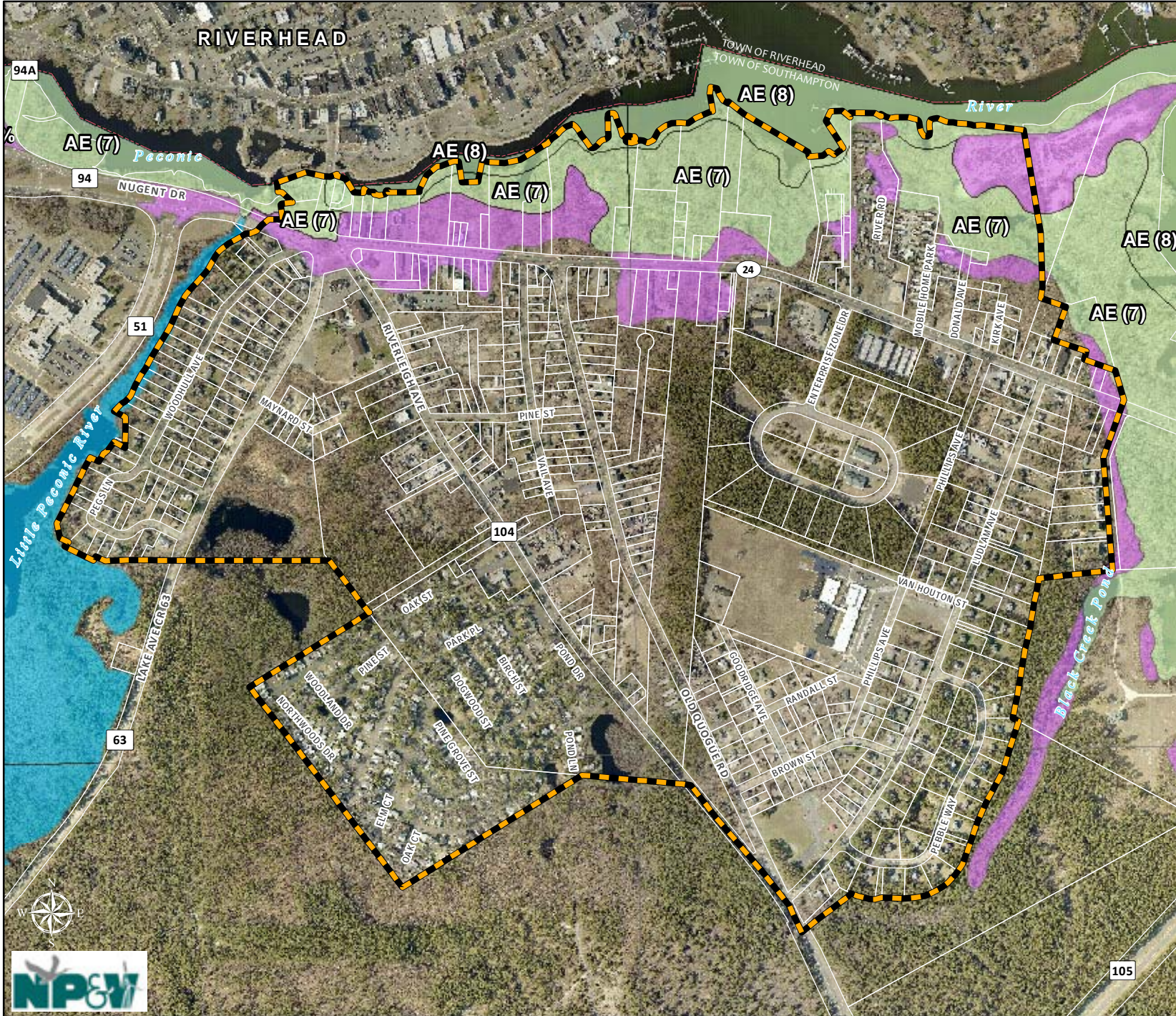
-  Study Area
-  Fresh Water Wetlands (NYS DEC)

Tidal Wetlands (NYS DEC)

-  Coastal Shoals Bars and Mudflats (SM)
-  Dredged Spoil (DS)
-  Fresh Marsh (FM)
-  High Marsh (HM)
-  Intertidal Marsh (IM)
-  Littoral Zone (LZ)

2014 Aerial Imagery










Town of Southampton
and
New York Department of State



Riverside Hamlet Revitalization

Figure 4-4
Flood Insurance
Rate Zones (FEMA)

Legend

-  Study Area
- Flood Insurance Rate Zones (FEMA)**
-  A - 1% ANNUAL CHANCE FLOOD HAZARD
-  AE - 1% ANNUAL CHANCE FLOOD HAZARD (*BFE)
-  X - AREAS OF MINIMAL FLOOD HAZARD
-  X - 0.2% ANNUAL CHANCE FLOOD HAZARD

*The computed elevation to which floodwater is anticipated to rise during the base flood.

The BFE is the regulatory requirement for the elevation or floodproofing of structures. The relationship between the BFE and a structure's elevation determines the flood insurance premium.

2014 Aerial Imagery

Prepared By:
The Town of Southampton Division
of Geographic Information Systems
Date: Thursday, October 01, 2015



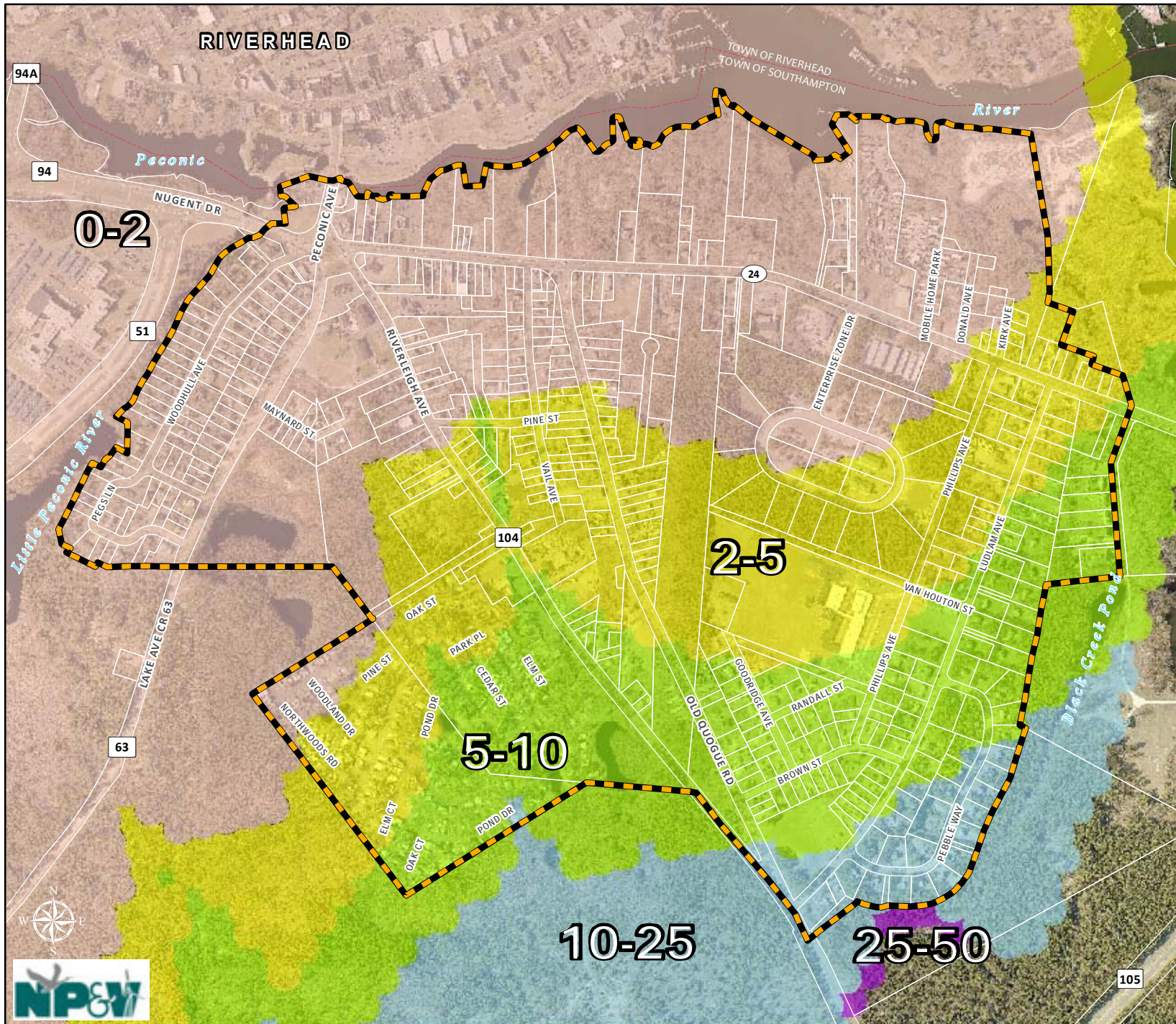




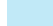



Figure 4-5
Groundwater
Contributing Area

Legend

 Study Area

Groundwater Contributing Areas - Estimated Time of Travel (Years)

-  0-2
-  2-5
-  5-10
-  10-25
-  25-50

Source: Suffolk County via CDM

2014 Aerial Imagery

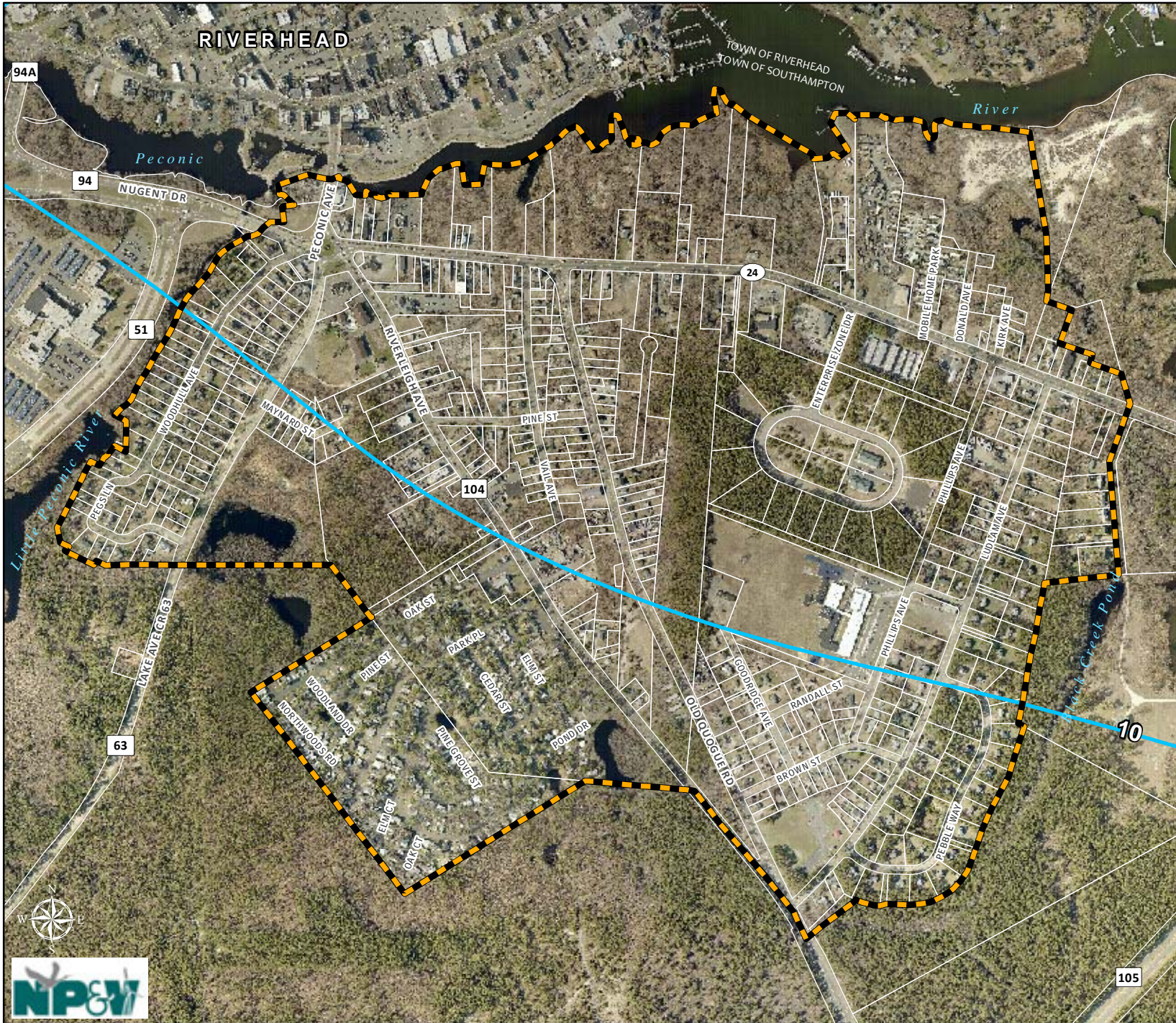




Figure 4-6
Water Table Contours

Legend

-  Study Area
-  Water Table Contours (USGS)

Groundwater flow is perpendicular to the water table contour in a north-easterly direction.

Contour values are in feet above or below NGVD 1929 with contours ranging from 10 to 120 feet above NGVD 1929

2014 Aerial Imagery

Prepared By:
The Town of Southampton Division
of Geographic Information Systems
Date: Friday, August 21, 2015









Town of Southampton
and
New York Department of State



Riverside Hamlet Revitalization

Figure 4-7
Depth To
Groundwater

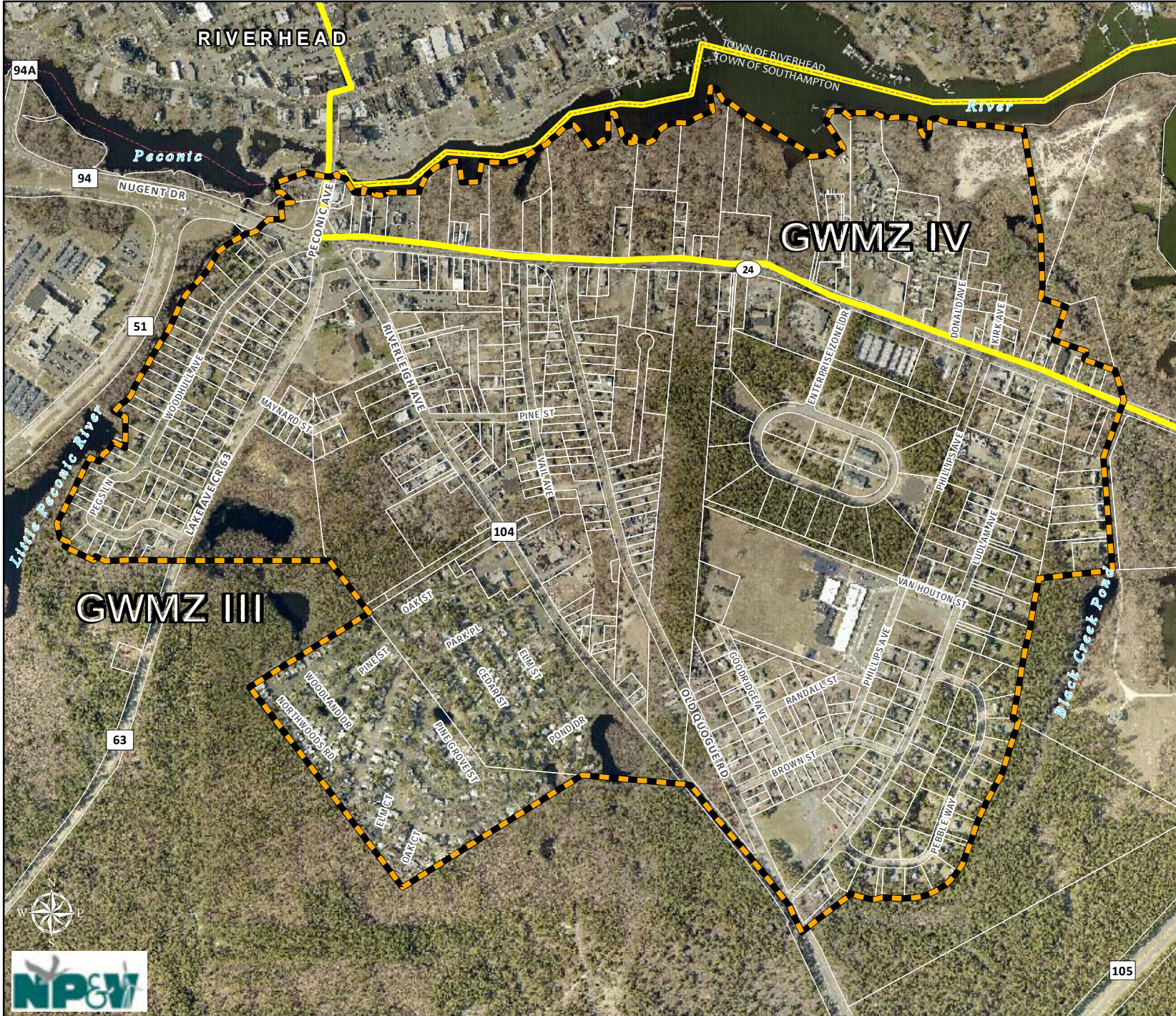
Legend

-  Study Area
- Ground Water Depth (USGS)**
-  < 1 ft
-  1ft - 8 ft
-  > 8ft



Prepared By:
The Town of Southampton Division
of Geographic Information Systems
Date: Thursday, August 20, 2015







Town of Southampton
and
New York Department of State



Riverside Hamlet Revitalization

Figure 4-8
Groundwater
Management Zones

Legend

-  Study Area
-  Groundwater Management Zones

2014 Aerial Imagery

Prepared By:
The Town of Southampton Division
of Geographic Information Systems
Date: Thursday, August 20, 2015



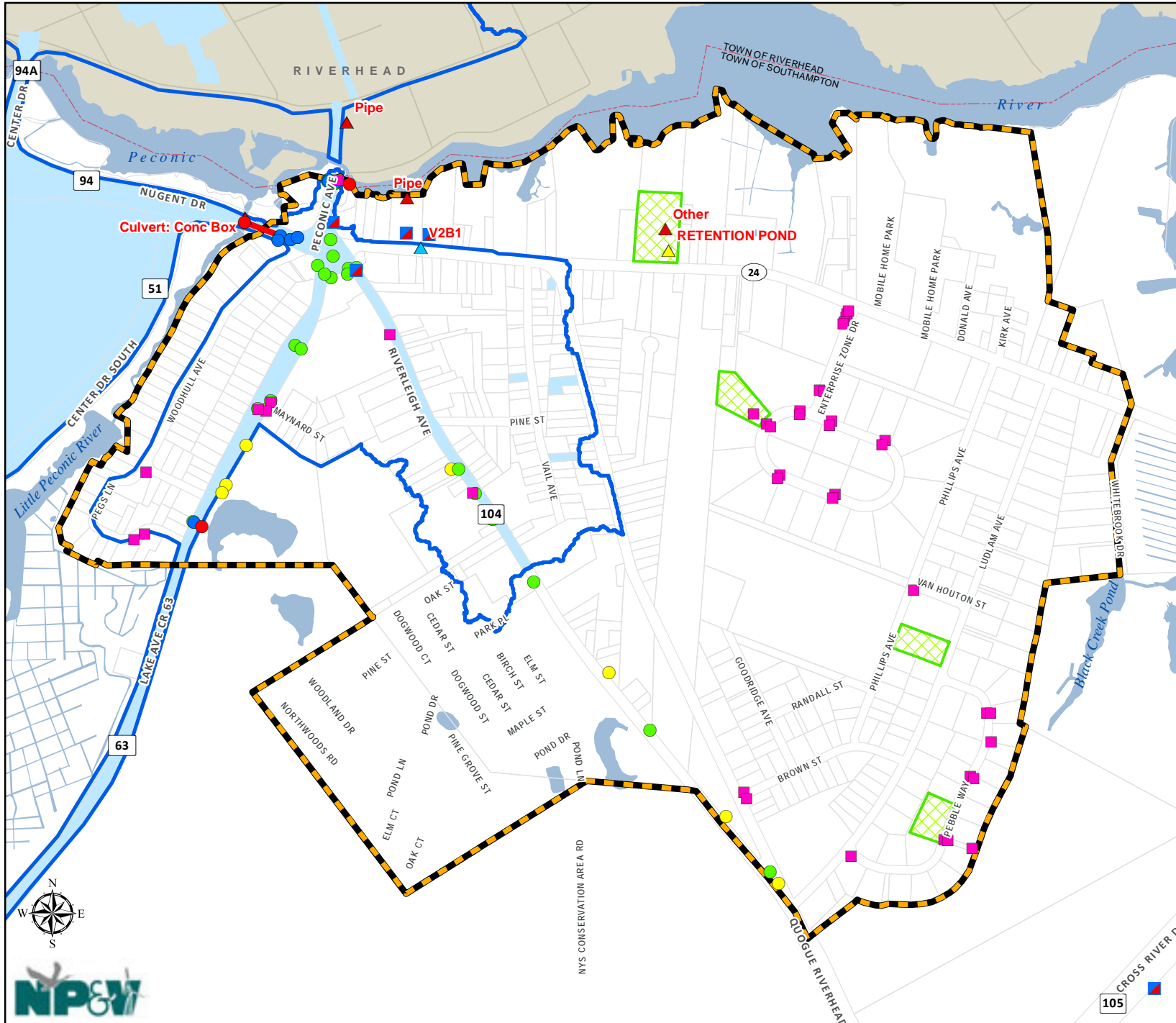
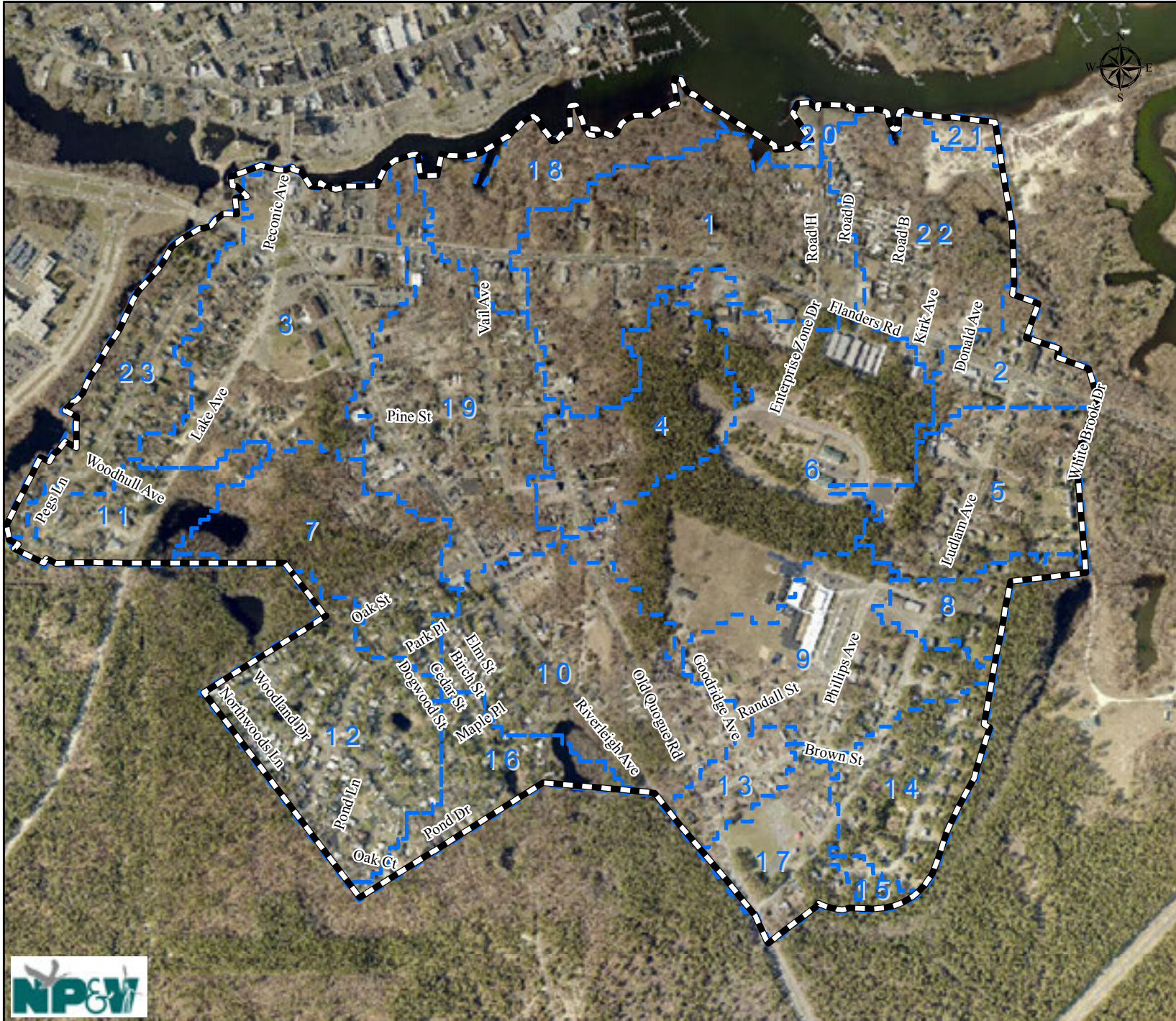


Figure 4-9
Stormwater Infrastructure

Legend

- Study Area
- State Infrastructure**
- Type - Description (See Red Label)
 - SPDES_Outfalls_R10
 - SWM_Facilities_R10
 - Vortex_units_R10
- County Infrastructure**
- Surface Water Outfalls
- Joint Structures
- Inlets 2008
- Inlets 2005
- Pipe Connections
- County Owned Sewershed (Flanders Bay)
- Flanders Bay Multi - Jurisdictional Sewershed Boundary
- Town Infrastructure**
- Outfalls
- Drainage Structures (unverified)
- Dedicated Drainage Parcels




Town of Southampton
and
New York Department of State



Riverside Hamlet Revitalization

FIGURE 4-10
Subwatersheds

Legend

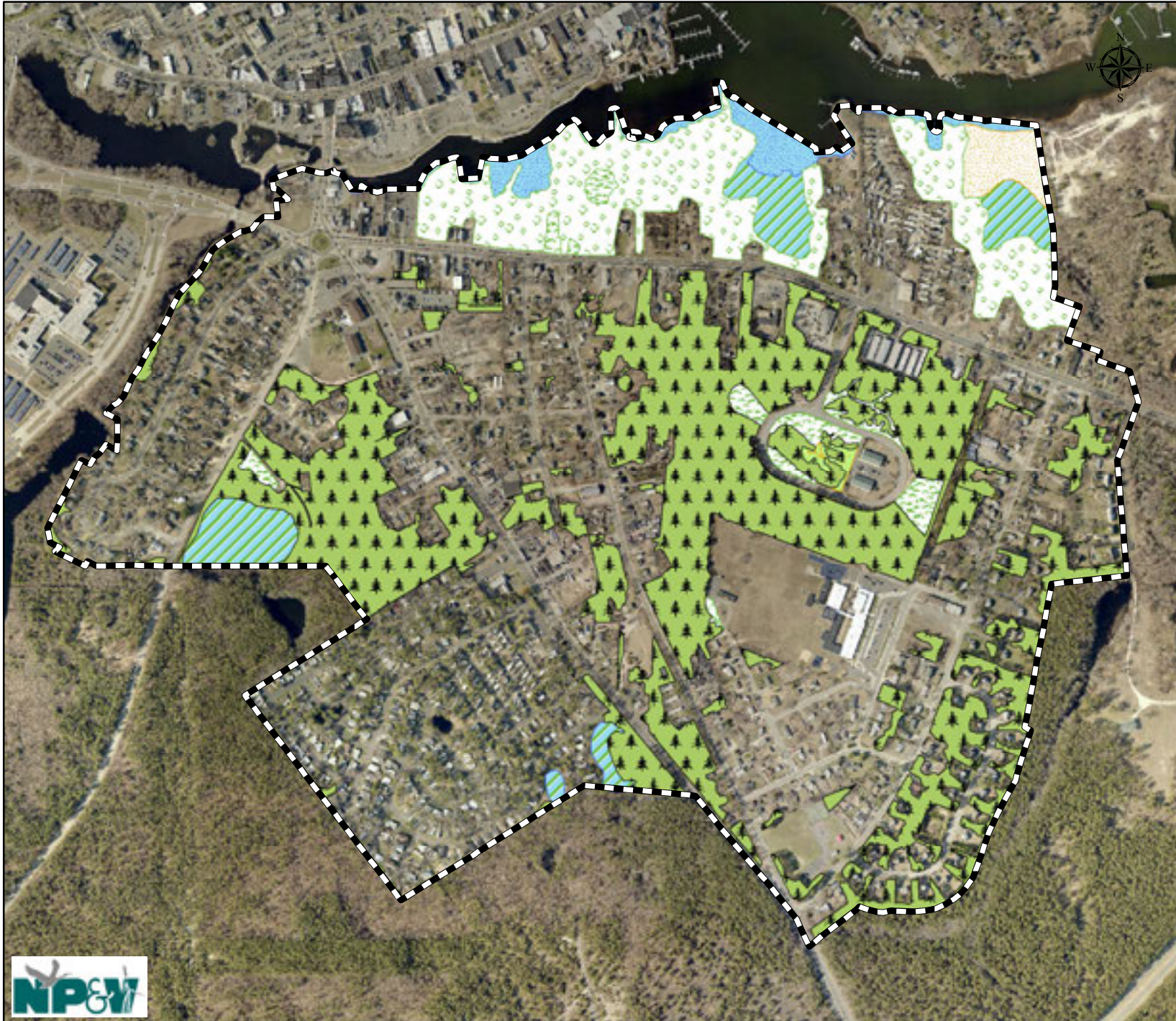
-  Study Area
-  Watersheds

Source: Town of Southampton
Orthoimagery, 2014; Suffolk County
LiDAR, 2006



1 inch = 800 feet





Town of Southampton
and
New York Department of State



Riverside BOA Revitalization
Action Plan and
Zoning Amendments

Figure 5-1
Habitat Map

Legend

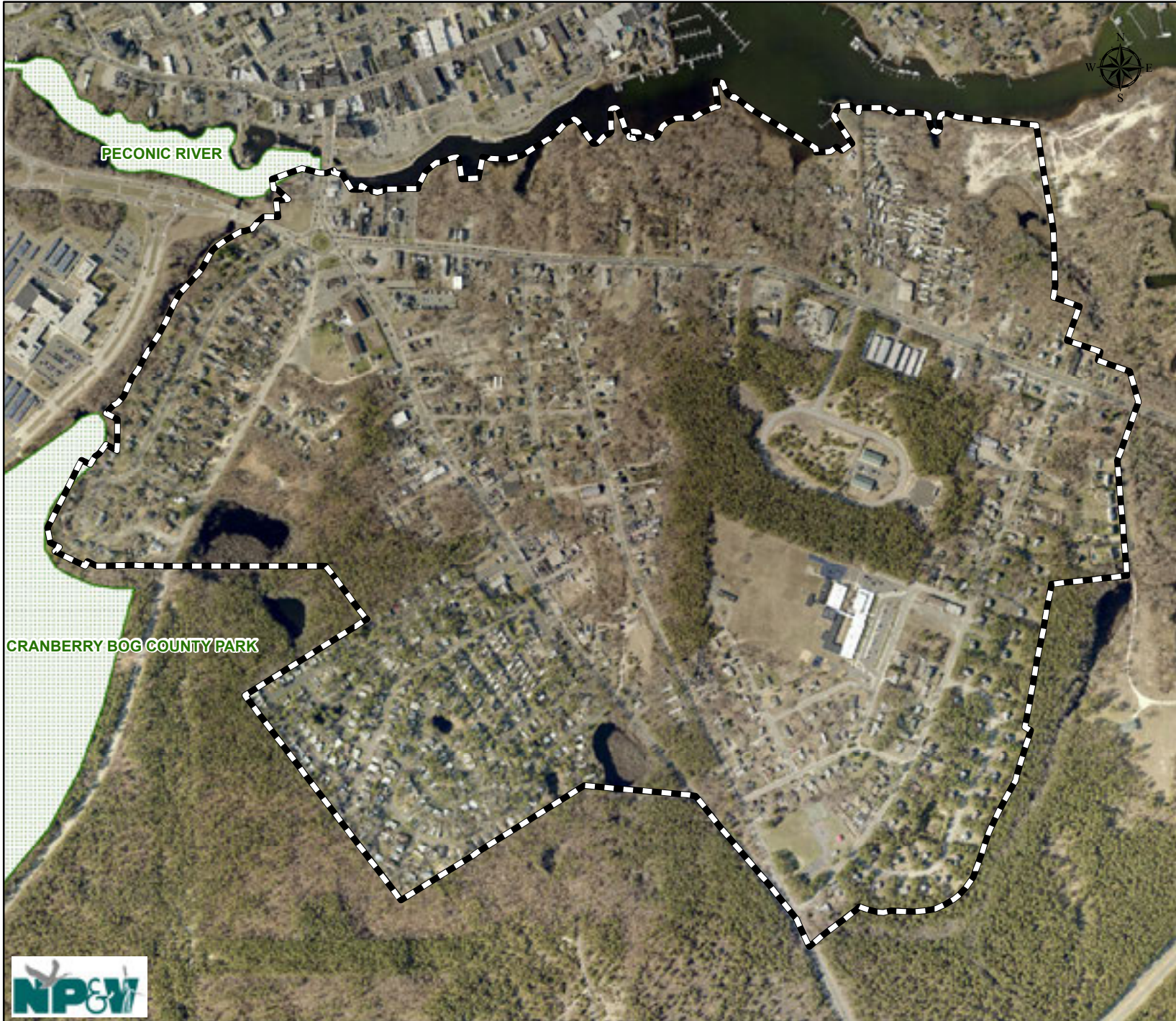
-  Study Area
-  Pitch Pine Oak Forest
(±101.5 Acres)
-  Deciduous Forest
(± 32.4 Acres)
-  Successional Shrubland
(±0.7 Acres)
-  Maritime Heathland
(±3.9 Acres)
-  Successional Old Field
(±5.9 Acres)
-  Freshwater Wetlands
(±12.6 Acres)
-  Tidal Wetlands
(±7.0 Acres)

Source: Town of Southampton
Orthoimagery, 2014

0 800
Feet

1 inch = 800 feet







Town of Southampton
and
New York Department of State



Riverside BOA Revitalization
Action Plan and
Zoning Amendments

Figure 5-2
**Significant Coastal Fish
& Wildlife Habitats**

Legend

-  Study Area
-  NYS Significant Coastal Fish and Wildlife Habitats

Source: Town of Southampton
Orthoimagery, 2014

0 800
Feet
1 inch = 800 feet



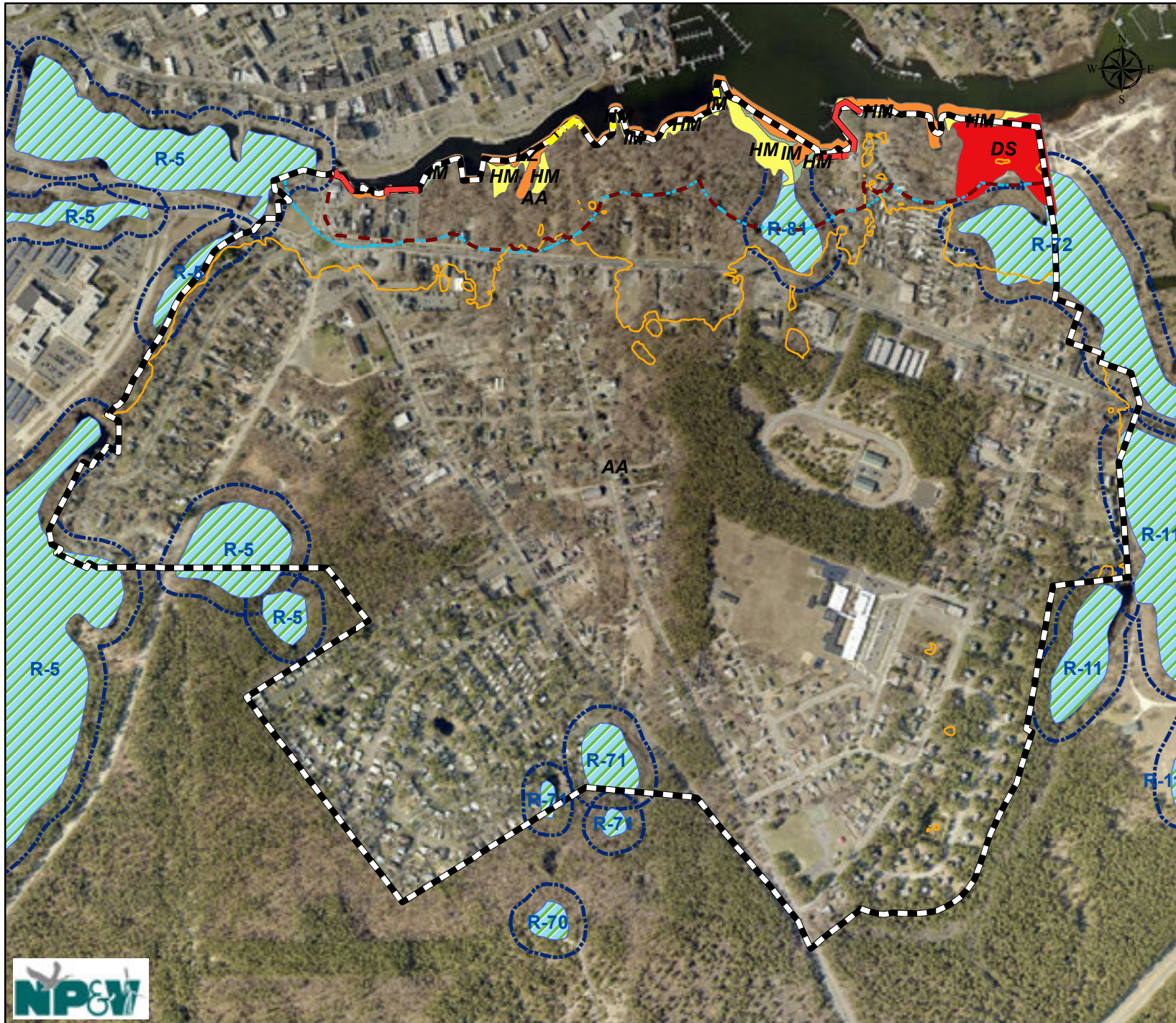













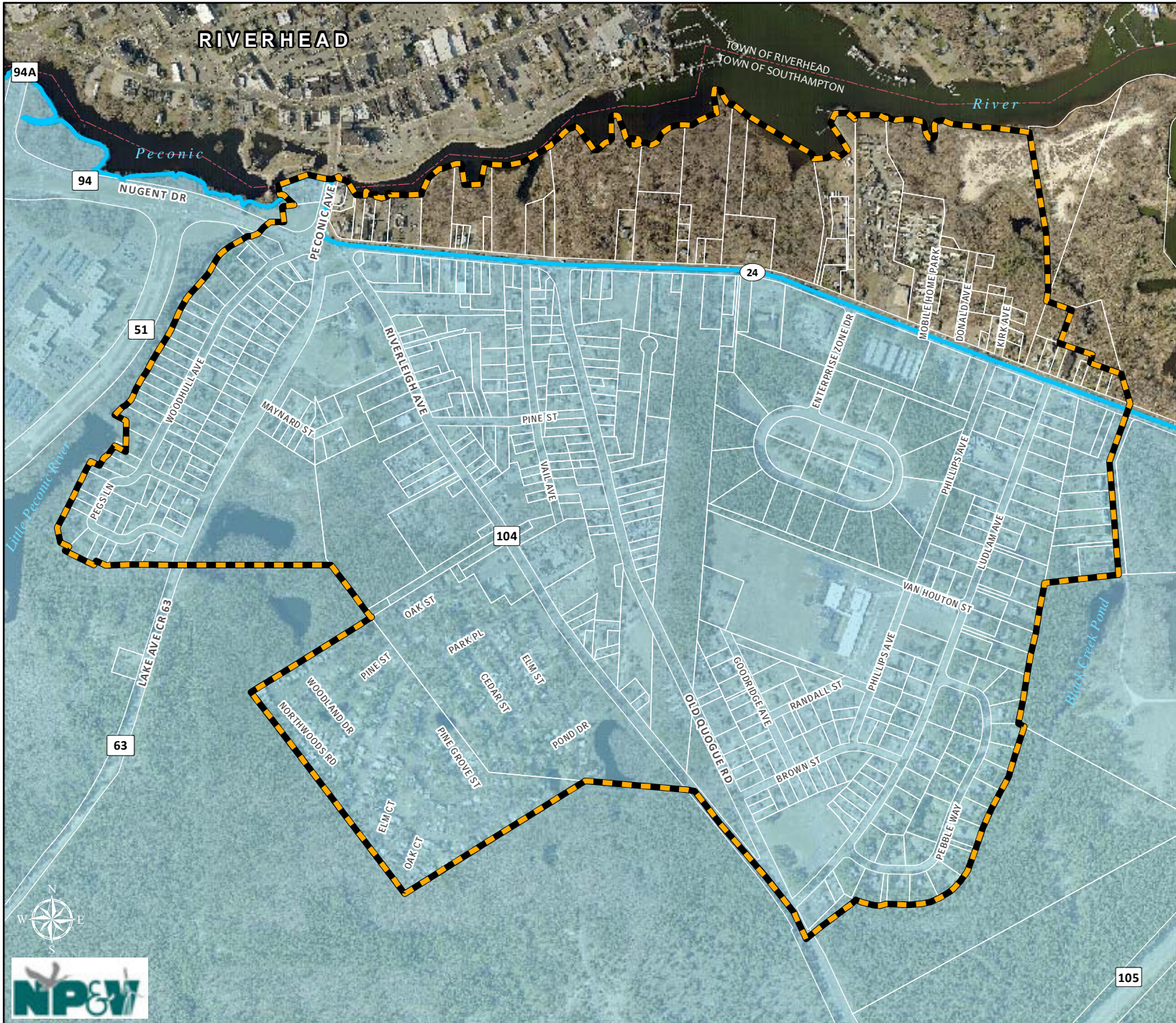
Figure 5-3
Natural Resource
Regulatory Jurisdictional
Areas (Approximate)

- Legend**
-  Study Area
 - Existing Bulkhead Condition
 -  Failed
 -  Functional
 - Approximate Limit of NYSDEC Tidal Wetland Jurisdiction
 -  El. 10
 -  300' Tidal Wetlands Buffer
 - NYSDEC Tidal Wetlands
 -  DS - Dredge Spoil
 -  HM - High Marsh
 -  IM - Intertidal Marsh
 -  LZ - Littoral Zone
 - NYSDEC Freshwater Wetlands
 -  NYSDEC Freshwater Wetlands
 -  Approximate NYSDEC 100' Freshwater Wetlands Adjacent Area

Source: Town of Southampton
Orthoimagery, 2014

0 800
Feet
1 inch = 800 feet






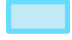
Town of Southampton
and
New York Department of State



Riverside Hamlet Revitalization

Figure 6-1
Aquifer Overlay District

Legend

-  Study Area
-  Aquifer Protection Overlay District

2014 Aerial Imagery

Prepared By:
The Town of Southampton Division
of Geographic Information Systems
Date: Thursday, August 20, 2015








Town of Southampton
and
New York Department of State



Riverside Hamlet Revitalization

FIGURE 6-2
Existing Woodland within
Pine Barrens

Legend

-  Study Area
-  Parcels
-  Existing Woodland (101.50 Ac)

Source: Town of Southampton
Orthoimagery, 2014; NP&V

0 800
Feet

1 inch = 800 feet



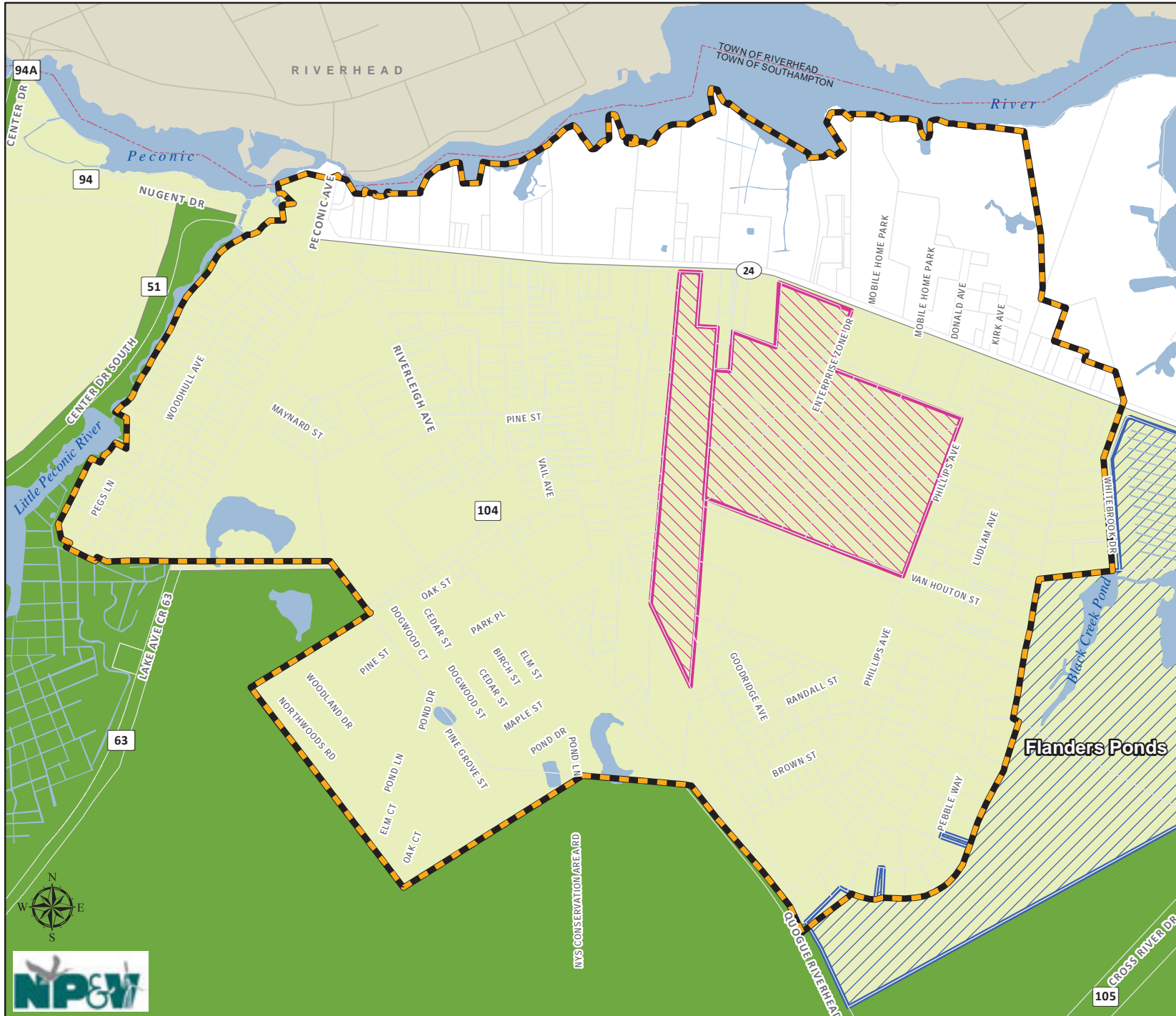


Figure 6-3
Pine Barrens

Legend

-  Study Area
- Pine Barrens Plan**
-  Compatible Growth Area
-  Core Preservation Area
-  Critical Resource Area
-  Development Rights Receiving Area



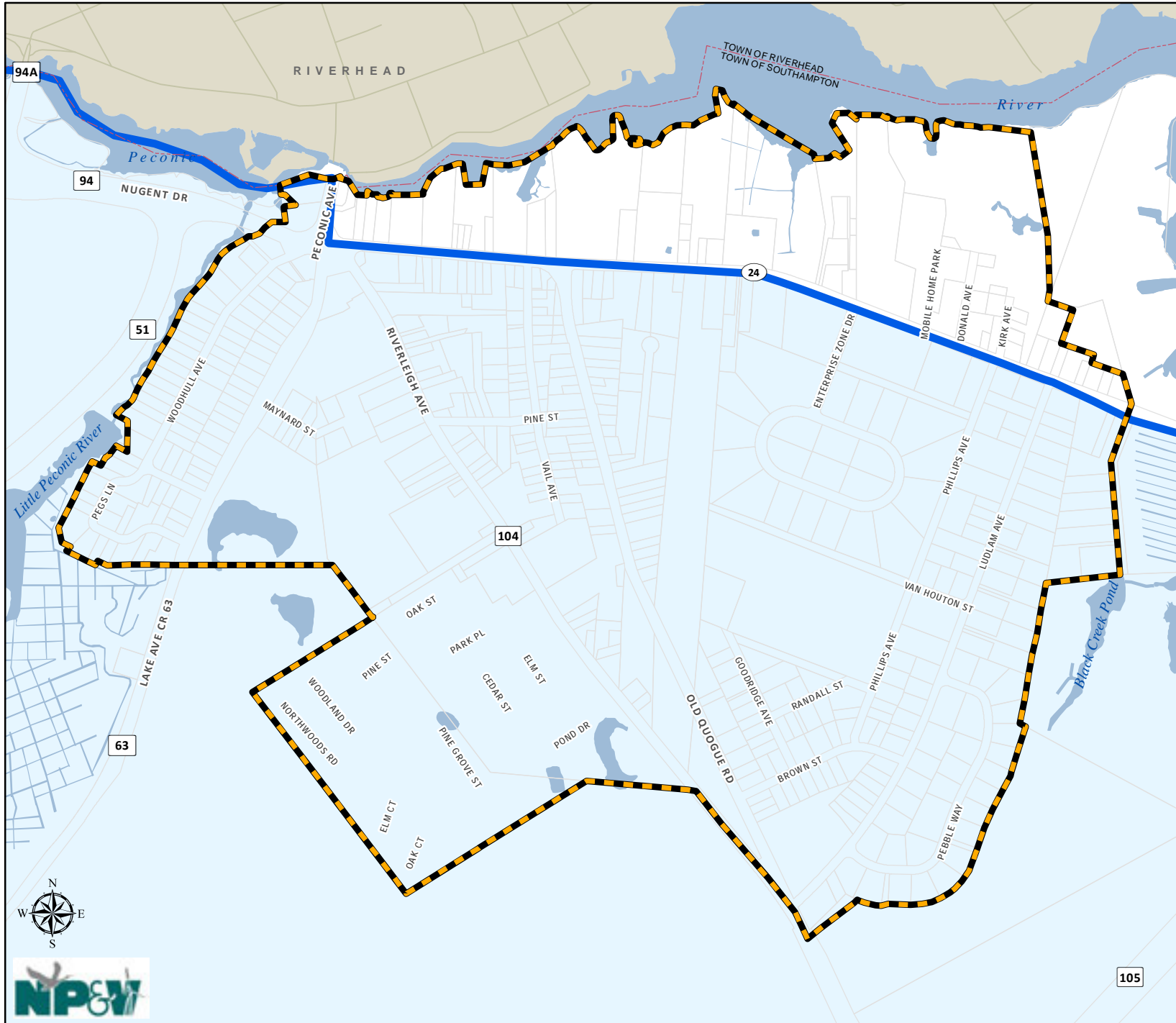


Figure 6-4
Central Suffolk
Special Groundwater
Protection Area

Legend



-  Study Area
-  Special Groundwater Protection Area



FIGURE 6-5
1984 Aerial
Photograph

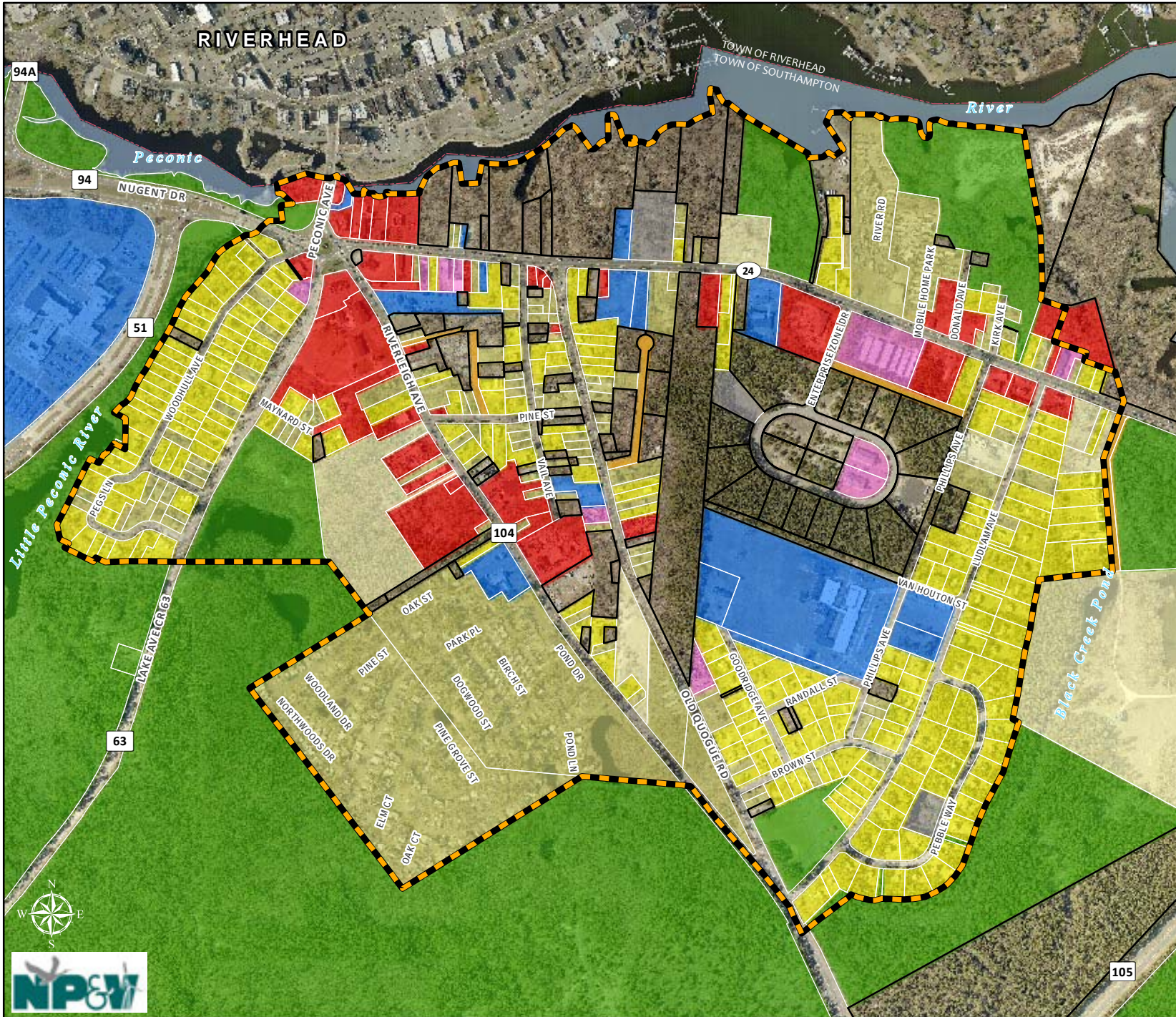
Legend

-  Study Area
-  Parcels
- WSRR Designation
 -  Community
 -  Recreational



Source: NYSDEC; SC Aerial
Photography, 1984; Town of
Southampton Tax Parcels















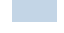

Town of Southampton
and
New York Department of State



Riverside Hamlet Revitalization

Figure 7-1
Land Use

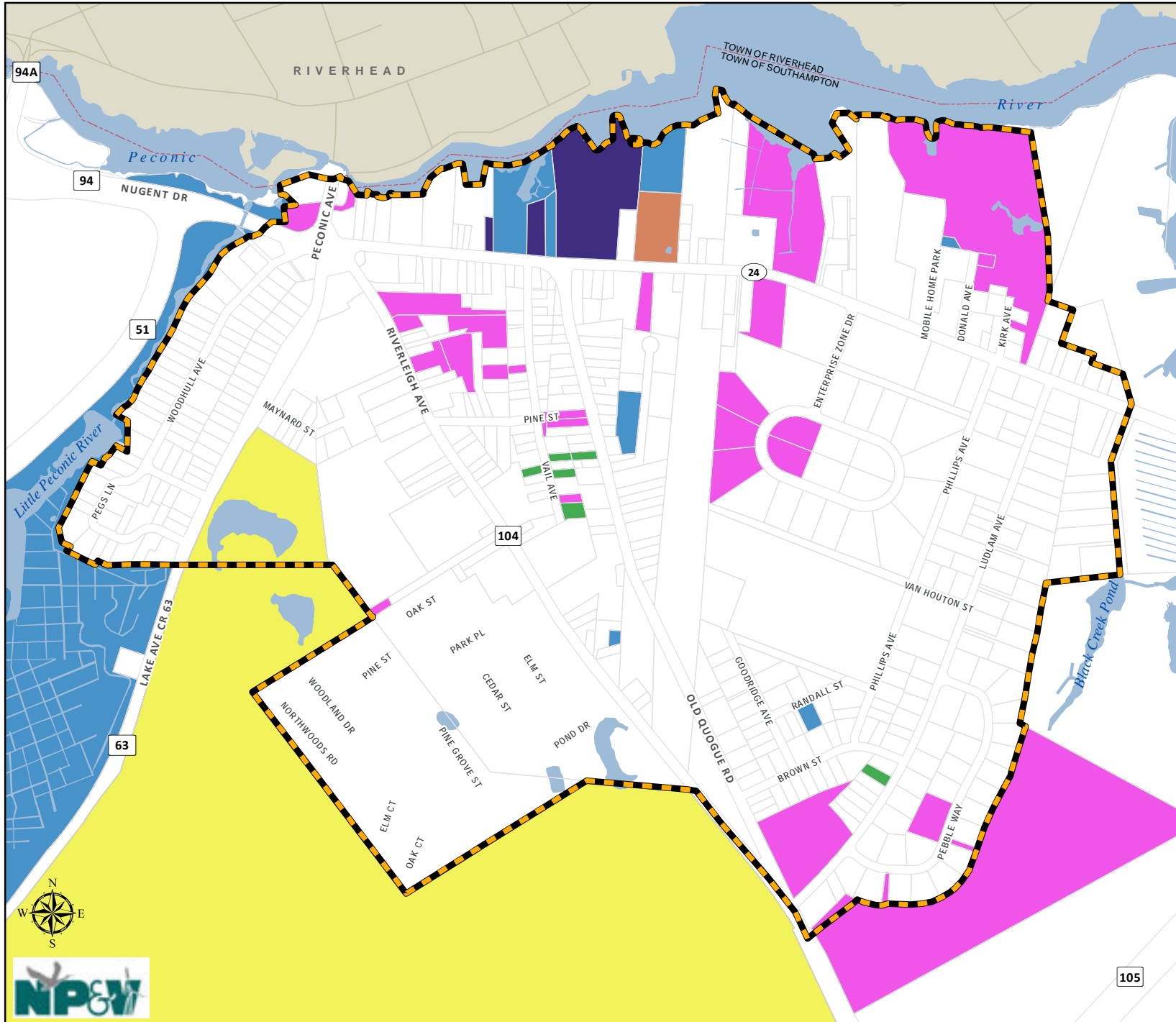
Legend

-  Study Area
- LAND USE**
-  Commercial
-  High Density Residential
-  Medium Density Residential
-  Low Density Residential
-  Industrial
-  Institutional
-  Recreation and Open Space
-  Recharge Basin
-  Vacant
-  Surface Waters
-  Transportation

2014 Aerial Imagery

Prepared By:
The Town of Southampton Division
of Geographic Information Systems
Date: Thursday, October 01, 2015





Town of Southampton
and
New York Department of State



Riverside Hamlet Revitalization

Figure 7-2
Land Ownership

Legend

- Study Area
- Public Lands**
- SOUTHAMPTON TOWN
- SOUTHAMPTON TOWN HOUSING AUTHORITY
- STATE OF NEW YORK DEPT OF TRANSPORTATION
- SUFFOLK COUNTY
- SUFFOLK COUNTY DIV OF RP ACQUISITION & MANAGEMENT
- SUFFOLK COUNTY TREASURER



Prepared By:
The Town of Southampton Division
of Geographic Information Systems
Date: Thursday, August 20, 2015

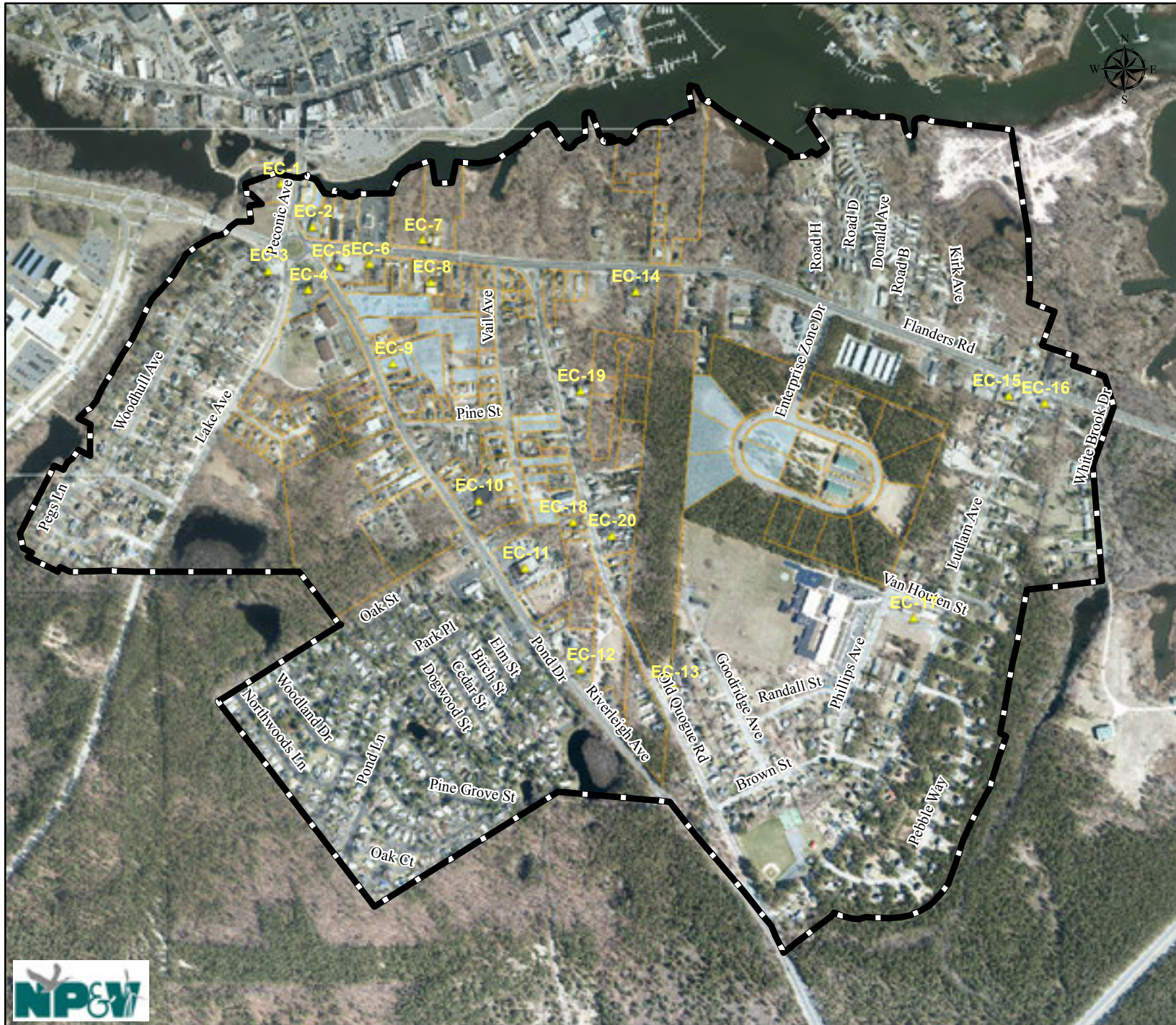


Town of Southampton
and
New York Department of State



Riverside Hamlet Revitalization

Figure 7-3
Sites of Environmental Concern



Legend

- Study Area
- Sites of Environmental Concern
- Theoretical Development Plan Parcels
- Town Parcels Eligible for Development

Source: SC Real Property
NYSGIS Orthoimagery
Program, 2013

0 800
Feet

1 inch = 800 feet



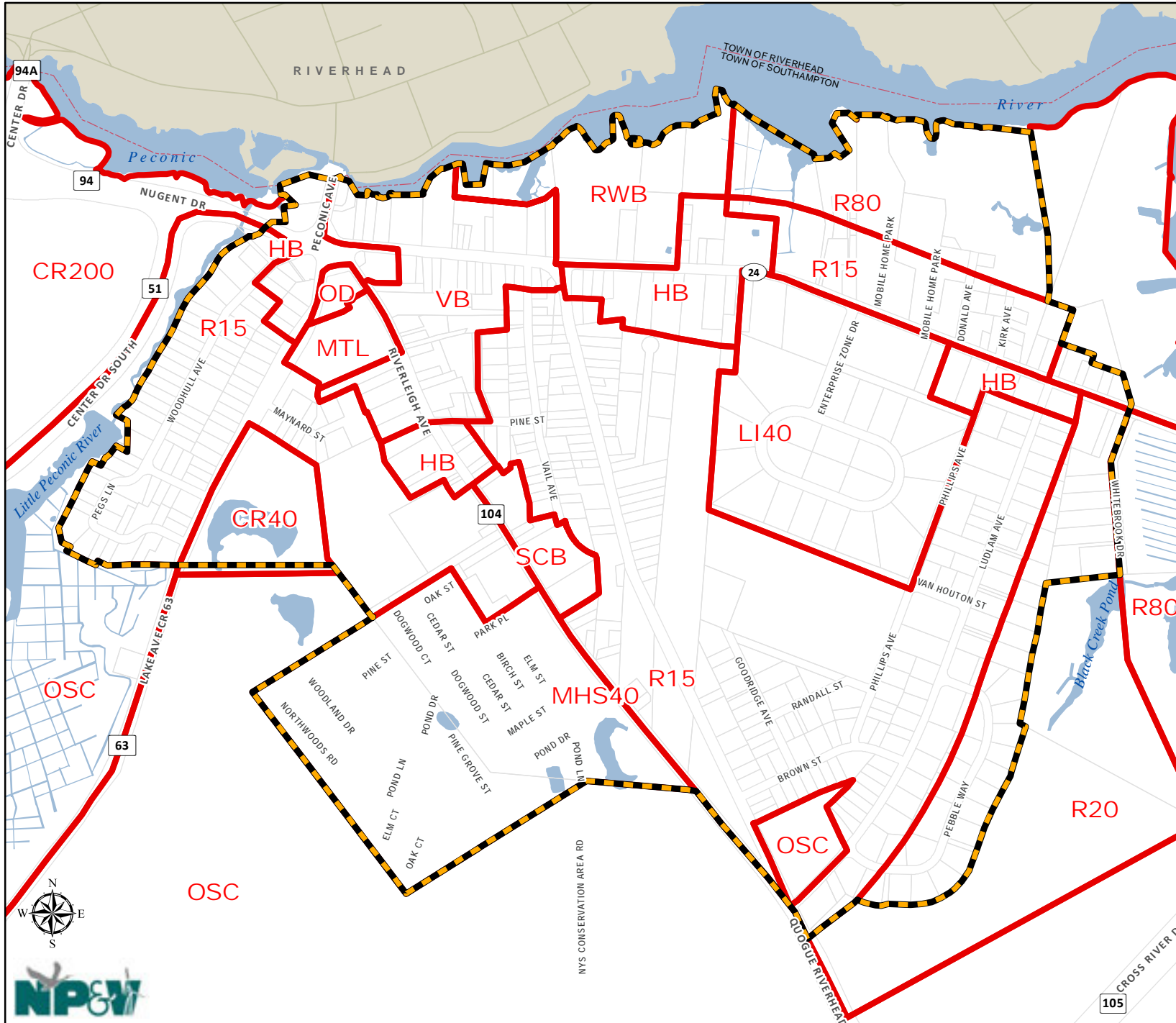


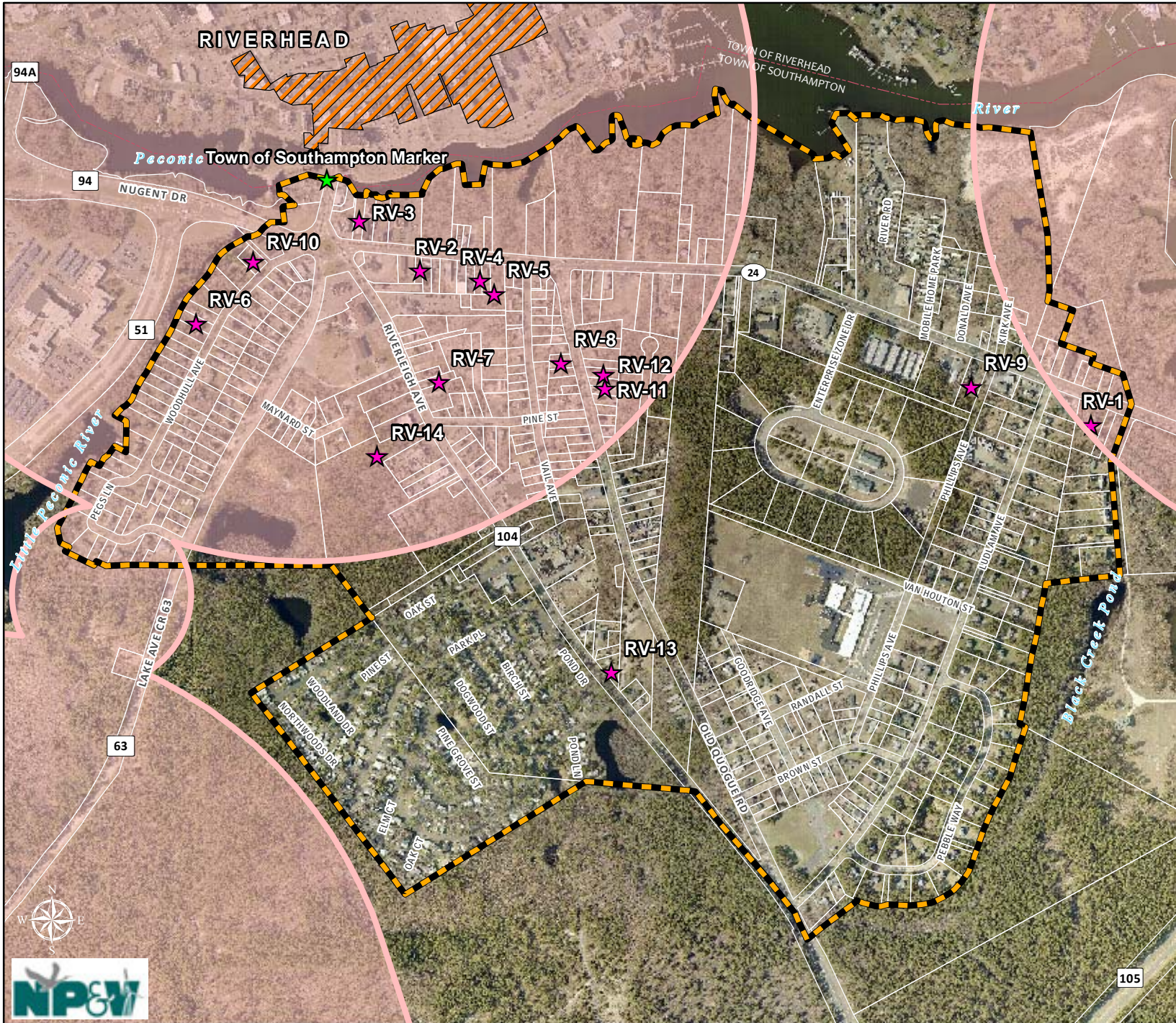



Figure 7-4
Zoning

- Legend**
-  Study Area
 -  Current Zoning
 - CR200 - Country Residence 200,000 sq ft
 - CR40 - Country Residence 40,000 sq ft
 - HB - Highway Business
 - LI40 - Light Industrial 40,000 sq ft
 - MHS40 - Mobile Home Subdivision Residence
 - MTL - Motel
 - OD - Office District
 - OSC - Open Space Conservation
 - R15 - Residence 15,000 sq ft
 - R20 - Residence 20,000 sq ft
 - R80 - Residence 80,000 sq ft
 - RWB - Resort Waterfront Business
 - SCB - Shopping Center Business
 - VB - Village Business








Town of Southampton
and
New York Department of State



Riverside Hamlet Revitalization

Figure 8-1
Historic and Cultural Resources

- Legend**
-  Study Area
 -  NYS Historic Site Markers
 -  2014 Historic Resources Survey (Compiled by AKRF) - Potentially Contributing Properties
 -  NYS Archeological Sensitive Sites (NYS OPRHP)
 -  Riverhead Historic District
- No Buildings on the National or State Register within study area

2014 Aerial Imagery

Prepared By:
The Town of Southampton Division
of Geographic Information Systems
Date: Monday, October 05, 2015

0 1,000 Feet






Figure 8-2
Historic Resource Survey Sites with
Theoretical Development Program

Legend

- Study Area
- Historic Survey Sites
- Theoretical Development Plan Sites



Source: Renaissance Downtowns
Town of Southampton
AKRF Hist. Resources Inventory



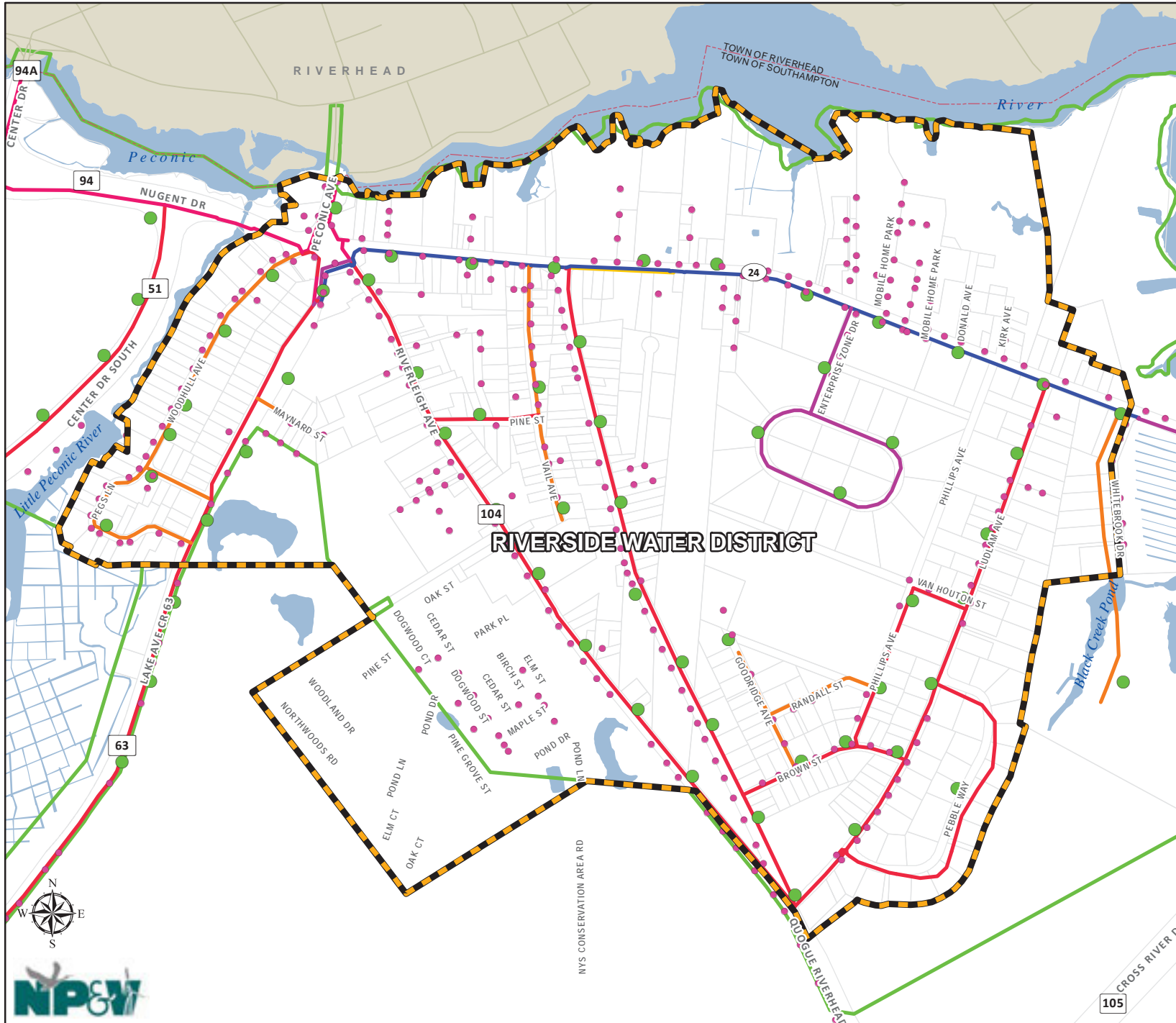


Figure 9-5
Utilities

Legend

- Study Area
- LIPA Poles
- SCWA Hydrants
- SCWA Distribution Areas

SCWA Water Mains

Diameter (in)

- 4
- 6
- 8
- 10
- 12
- 16

The map indicates the SCWA infrastructure installed in the depicted area as of the date listed thereon. The map does not indicate the presence of easements, occupied or unoccupied, or facilities owned by SCWA customers.

It is the responsibility of an operator to arrange to have services "marked-out" before commencing excavation.

Public and private hydrant data should be field or survey verified.

Prepared By:
The Town of Southampton Division
of Geographic Information Systems
Date: Friday, September 25, 2015





Riverside Hamlet Revitalization

Figure 14-1

Potential STP Locations



Legend

- Study Area
- STP Buffer Radius
- Potential STP Locations
- Blocks
- Potential Remote STP Discharge Areas
- 100' Setback from Surface Water and Wetlands
- NYSDEC Tidal Wetlands**
- DS - Dredge Spoil
- FM - Fresh Marsh
- HM - High Marsh
- IM - Intertidal Marsh
- LZ - Littoral Zone
- SM - Shoals, Bars & Mudflats
- NYSDEC Freshwater Wetlands
- Depth to Groundwater (feet asl)**
- <12'
- >12'

Source: Town of Southampton, 2014; NYSDEC; USGS, 2010

1 inch = 600 feet





Riverside Hamlet Revitalization

Figure 14-2

Potential STP Locations &
Groundwater Contributing Areas

Legend

- Study Area
- 200' STP Buffer Radius
- Potential STP Locations
- Potential Remote Discharge Areas
- 100' Freshwater Wetland Buffer
- NYSDEC Freshwater Wetlands
- 0 - 2 Year Groundwater Contributing Area
- 2 - 5 Year Groundwater Contributing Area
- 5 - 10 Year Groundwater Contributing Area
- 10 - 25 Year Groundwater Contributing Area
- 25 - 50 Year Groundwater Contributing Area

Source: Town of Southampton, 2014;
NYSDEC; USGS, 2010

1 inch = 600 feet

