

**TOWN OF SOUTHAMPTON
2011 ADOPTED BUDGET
BUDGETED APPROPRIATIONS**

<u>FUND</u>	2011 <u>APPROPRIATIONS*</u>	2011 <u>ESTIMATED REVENUE</u>	2011 <u>SURPLUS/DEFICIT</u>	2011 <u>APPROPRIATION OF FUND BALANCE</u>	2011 <u>TAX LEVY</u>
01 GENERAL FUND**	\$ 39,583,366	\$ 15,275,309	\$ 8,500	\$ 0	\$ 24,316,557
02 POLICE FUND	\$ 21,252,962	\$ 2,438,566	\$ 0	\$ 0	\$ 18,814,396
03 PART-TOWN FUND***	\$ 4,762,351	\$ 2,774,829	\$ 0	\$ 1,079,962	\$ 907,561
06 PART-TOWN HIGHWAY	\$ 12,414,295	\$ 1,644,285	\$ 0	\$ 0	\$ 10,770,010
14 EMERGENCY DISPATCH -911	\$ 2,242,205	\$ 80,000	\$ 0	\$ 0	\$ 2,162,205
TOTAL	\$ 80,255,179	\$ 22,212,989	\$ 8,500	\$ 1,079,962	\$ 56,970,729

* Includes Provisions for Debt Service

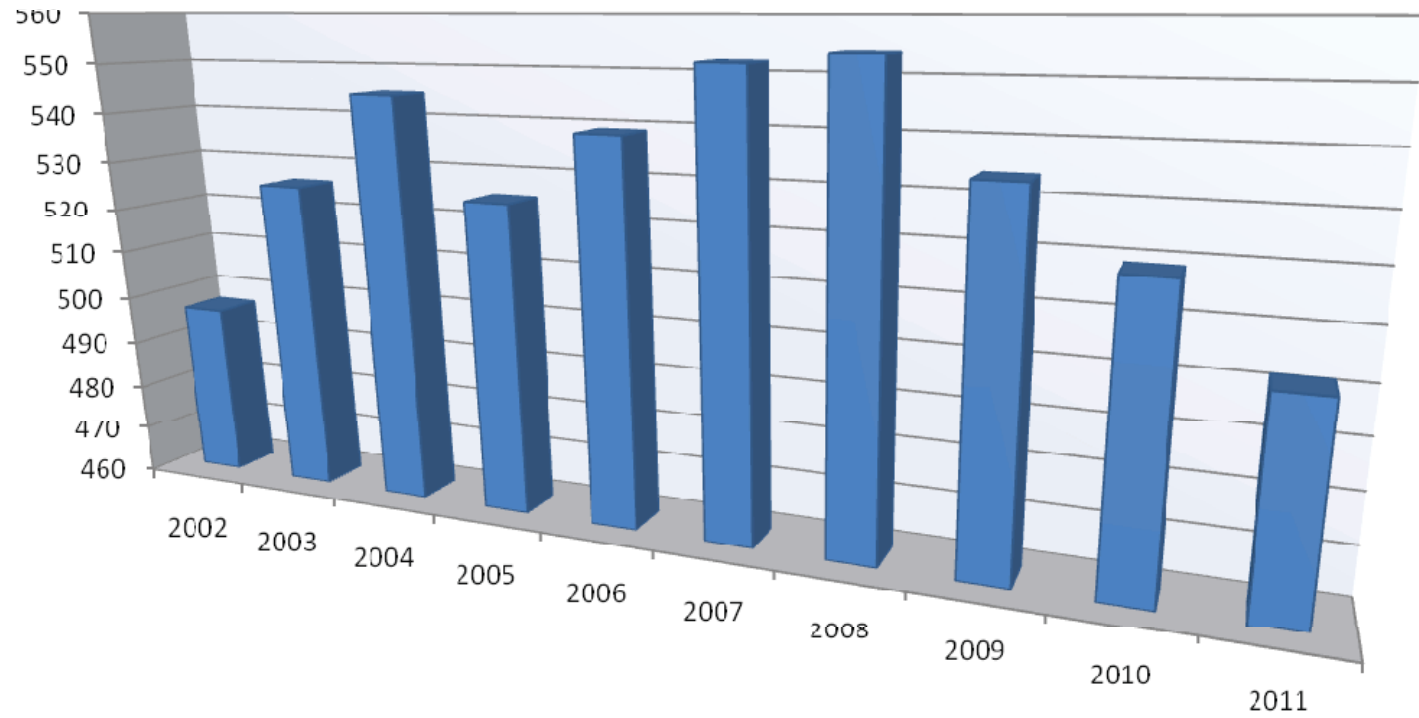
** Includes Enterprise Funds Waste Management, Beaches, Marinas, Commercial Dock, and E&G Channel

*** Includes Land Management Enterprise Fund

NOTE: General Fund Appropriation includes: \$500 thousand of Deficit Reduction

NOTES:

Town of Southampton Historic Staffing Levels Including 2011 Adopted Budget



NOTES:

TOWN OF SOUTHAMPTON
Tax Rate Calculation
2010-2011
@100% Equalization per \$1,000 of Assessed Value

	2008 Adopted Tax Rate- After Surplus Allocation	2009 Adopted Tax Rate- After Surplus Allocation	<u>2010 Adopted Tax Rate-</u>	<u>2011 Proposed Tax Rate</u> After Surplus Allocation
General Town	0.38	0.43	0.431	0.435
Police	0.53	0.56	0.522	0.507
E-911	0.06	0.04	0.050	0.049
Part Town	0.01	0.01	0.050	0.029
Part Town – Highway	0.26	0.29	0.321	0.342
Total Tax Rate	1.25	1.32	1.374	1.362
Percent Increase		5%	4.1%	(0.87)%

NOTES:

**TOWN OF SOUTHAMPTON
TAX IMPACT ANALYSIS
(2011 ADOPTED)**

NOTES:

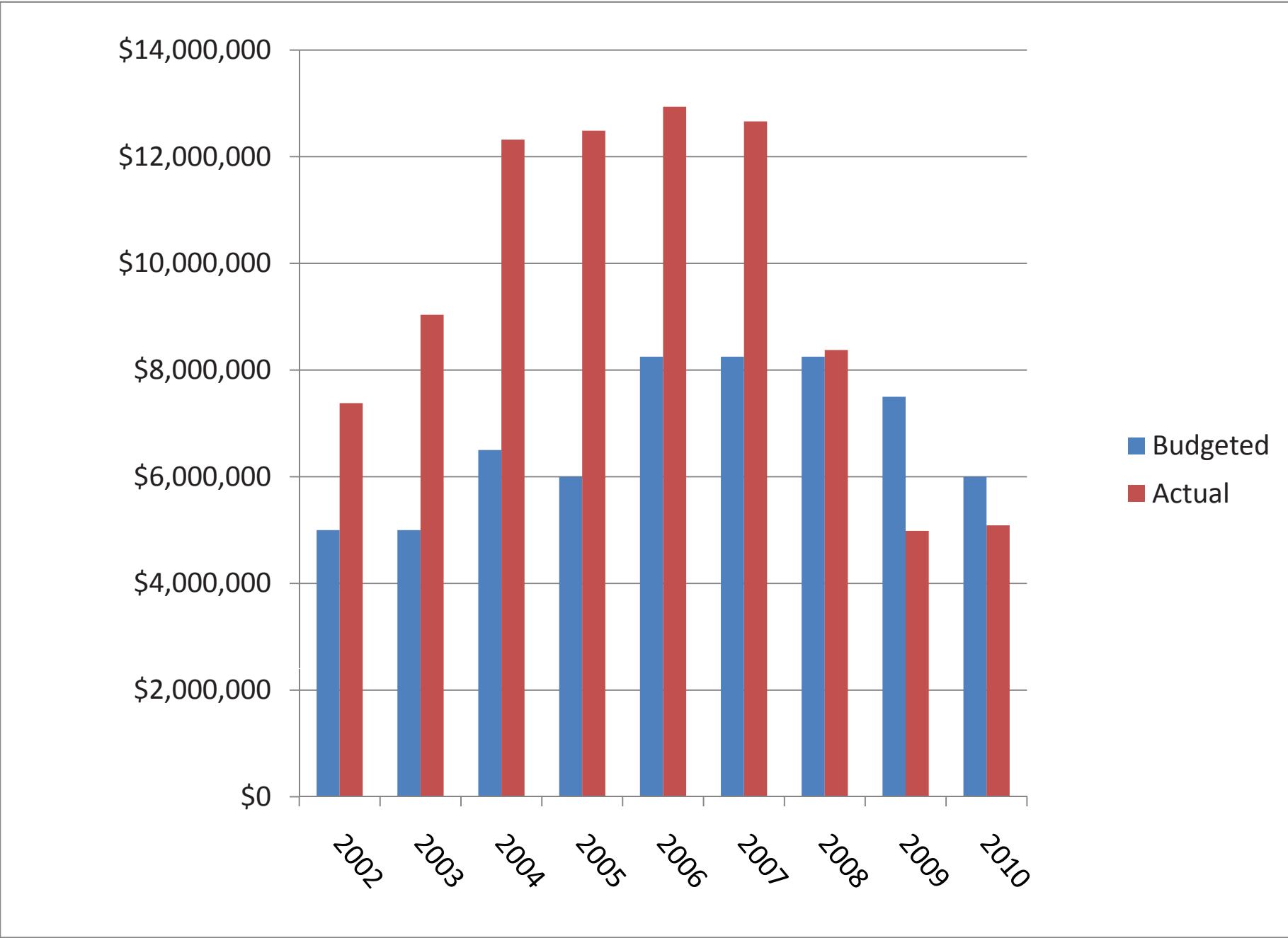
<u>TAX RATE INCREASE*</u>	<u>TENTATIVE 2011 TAX RATE</u>	<u>ADOPTED 2010 TAX RATE</u>	<u>ADOPTED 2009 TAX RATE</u>
2.4% (\$0.034 additional per \$1,000 assessed valuation)	1.3628 per \$1,000 a.v.	\$1.374 per \$1,000 a.v.	\$1.32 per \$1,000 a.v.
Taxpayer with a home valued at \$600,000 in unincorporated area of Southampton Town	2011 Town Taxes \$817.68	2010 Town Taxes \$824.40	2009 Town Taxes \$792.00



TAX DECREASE TOTAL = \$6.72 for 2011 (for house valued at \$600,000)

* Chapter 8 of the Town Code limits the Town Board of the Town of Southampton from enacting a tax rate increase to no greater than 5% above the prior year's tax rate.

Town of Southampton Mortgage Tax Revenue



NOTES: