

SUFFOLK COUNTY ARMY AIRFIELD BOMBING AND GUNNERY RANGE FORMERLY USED DEFENSE SITE

Remedial Investigation through Record of Decision Community Information Session

Julie Rupp
Project Manager
New England District
Geo-Environmental Engineering
Date: March 25 & 28, 2024



US Army Corps
of Engineers®





AGENDA



- Introduction (acronyms, key definitions, Team)
- Formerly Used Defense Sites (FUDS) Brief Program Overview
- Site History: Suffolk County Army Air Field (AAF) Bombing and Gunnery Range (BGR) Munitions Response Site (MRS)
Remedial Investigation Overview
- What Does This Mean for Me?
- Where to Find Information on the Project
- In-Person Office Hours and Meeting
- Estimated Schedule: What's Next?
- Safety Reminder and Questions



ACRONYMS



AAF	Army Airfield
BGR	Bombing and Gunnery Range
CERCLA	Comprehensive Environmental Response, Compensation, and Liability Act
DoD	Department of Defense
FUDS	Formerly Used Defense Site
HE	High Explosive
MC	Munitions Constituents
MEC	Munitions and Explosives of Concern
MRS	Munitions Response Site
RI	Remedial Investigation
ROE	Right of Entry
USACE	U.S. Army Corps of Engineers
UXO	Unexploded Ordnance



KEY DEFINITIONS



WHAT ARE WE LOOKING FOR?

Munitions and Explosives of Concern (MEC) -Military munitions that may pose explosives safety risks

Munitions Constituents (MC) – Degradation or breakdown elements of unexploded ordnance (UXO) or munitions (i.e., chemicals such as metals and explosives)



PROJECT TEAM



USACE

- Project Manager – Julie Rupp
- Technical Manager – Todd Beckwith

Contractor – Tetra Tech

- Tetra Tech Project Manager – Jennifer Harlan
- Tetra Tech Deputy Project Manager – Jeny Mitchell

Supported by a team including Ordnance and Explosives Safety Specialists; Risk Assessors; Geophysicists; Chemists; Geologists; Public Affairs staff; Biologists; Cultural Resources Specialists; Real Estate Specialists



FORMERLY USED DEFENSE SITES (FUDS)

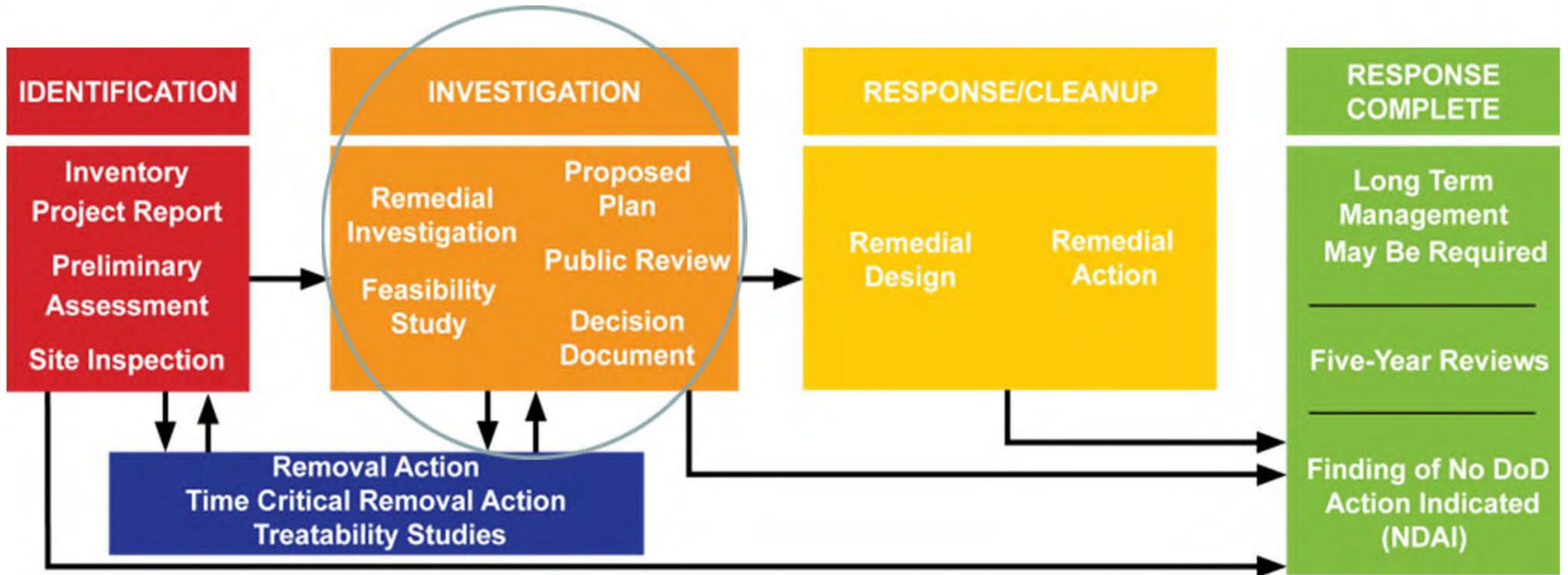


- **Definition:** Real property that was formerly owned by, leased to, or otherwise possessed by the United States and under the jurisdiction of the Secretary of Defense Prior to October 1986.
- **Goal:** “To reduce, in a timely and cost-effective manner, the risk to human health and the environment resulting from past DoD activities at formerly used DoD properties.”
 - FUDS cleanup is performed under the Comprehensive Environmental Response, Compensation, and Liability Act (CERCLA).
- For more information on the FUDS Program:
<https://www.usace.army.mil/missions/environmental/formerly-used-defense-sites/>



PROCESS OVERVIEW FOR FUDS

Project is currently at this stage





GOALS FOR THE REMEDIAL INVESTIGATION (RI)



Overall Goal:

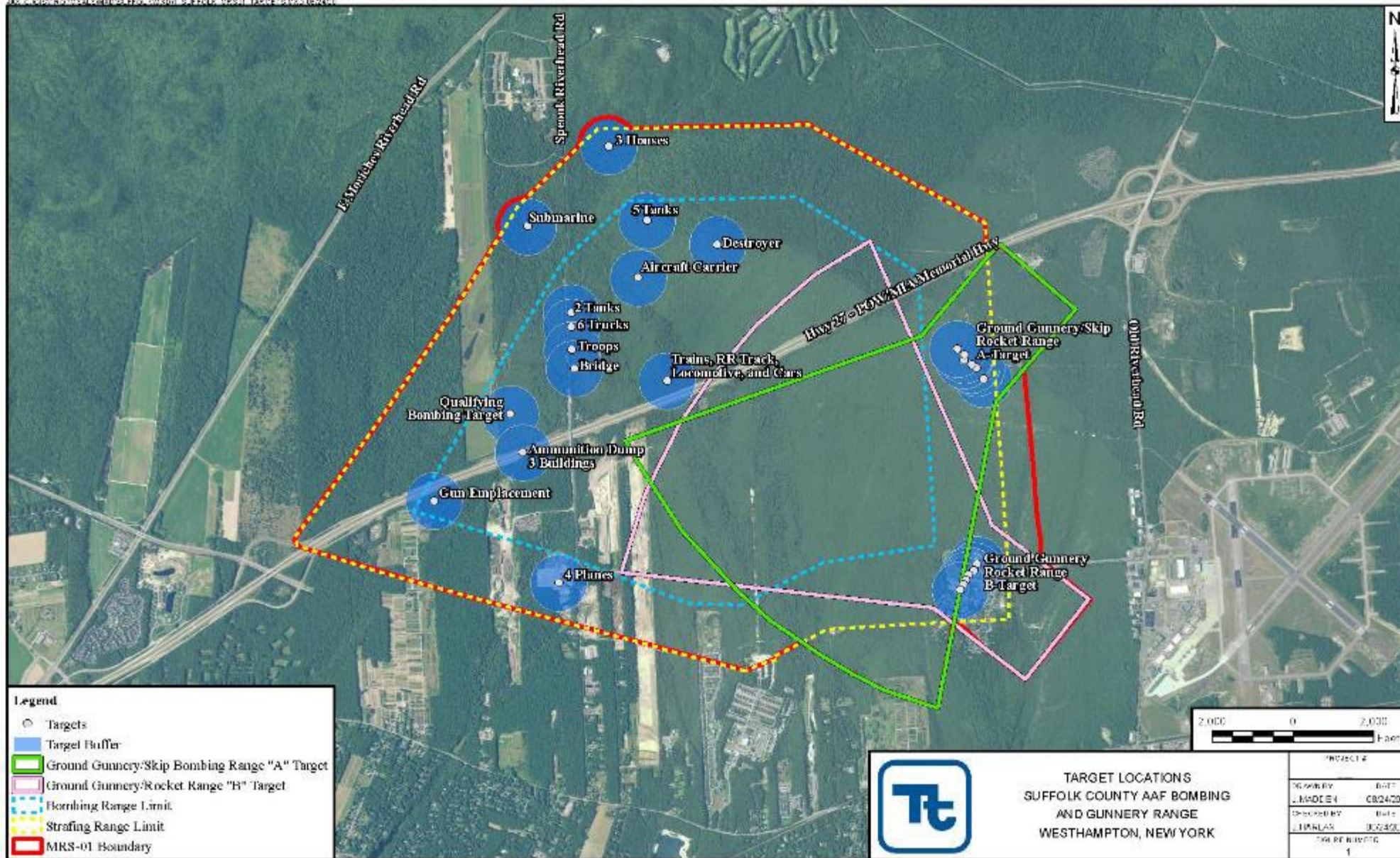
- **Gather sufficient information** to determine the nature and extent of munitions and explosives of concern (MEC) and/or munitions constituents (MC) and **assess the potential risks/hazards to evaluate next steps** (no further action or remedial action alternative)

Remedial Investigation [RI] Objectives:

- Conduct field investigations to characterize the Munitions Response Site (MRS)
- Determine the type (nature), density, and distribution (extent) of MEC
- Determine the concentrations (if any) and extent of MC
- Assess potential risks/hazards to human health, safety and the environment
- Assess MRS boundaries



SUFFOLK COUNTY AAF BGR MRS-01





SUFFOLK COUNTY AAF BGR MRS-01 SITE INFORMATION



- Majority of the training exercises appear to have been .50 caliber machine guns, practice bombs, and practice rockets
- From May 1943 through January 1944 100-lb and 500-lb high explosive (HE) bombs, incendiary bombs, and 4.5-in HE rockets were reportedly used on the numerous targets located throughout the MRS
- No military structures remain except for two target silhouettes (a destroyer and aircraft carrier)
- Records indicate a surface clearance was conducted in 1946



FIELDWORK COMPLETED TO DATE

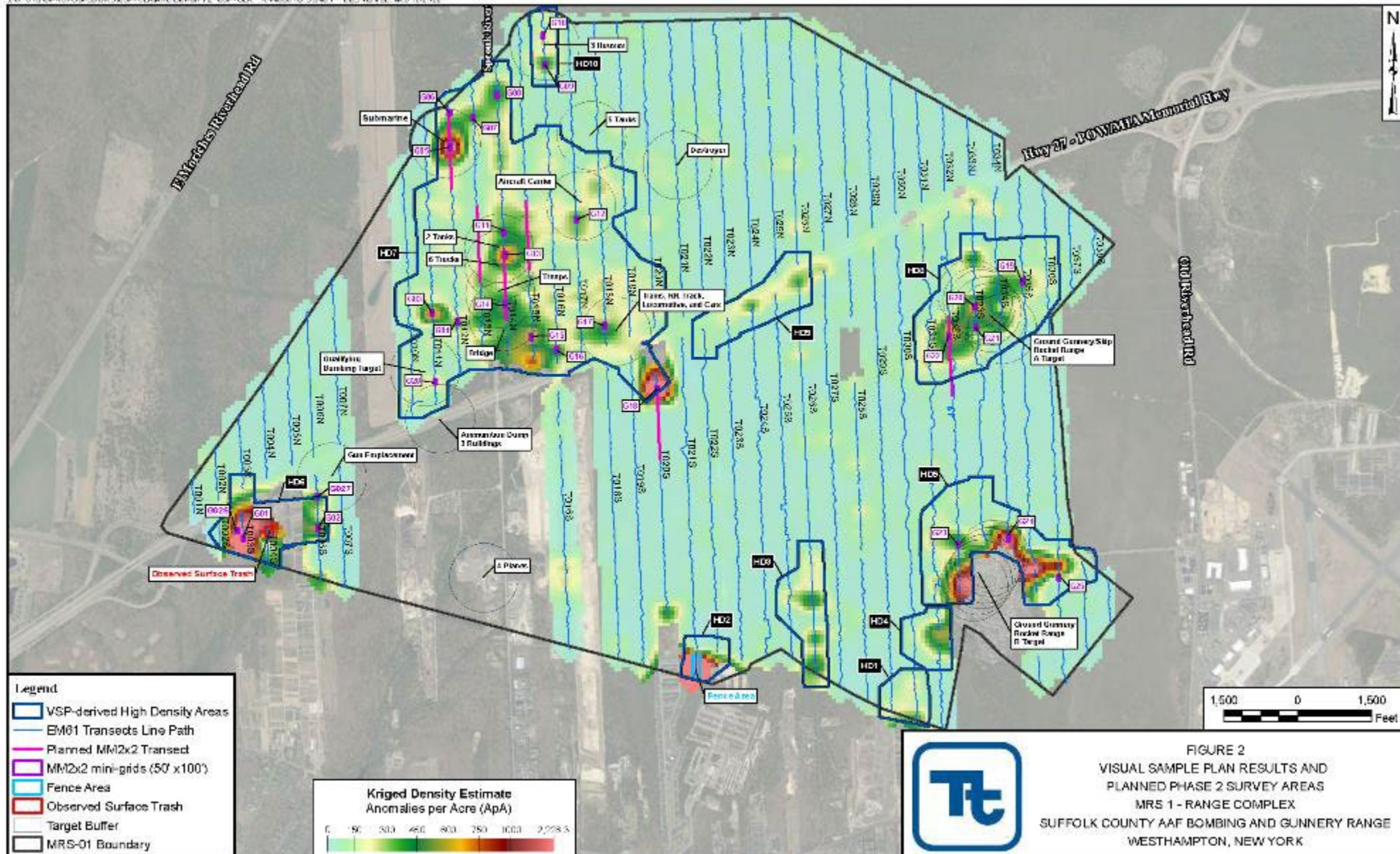


Preliminary MRS Characterization (Phase 1)

- Transect establishment in non-residential area
 - All transects were walked by a biologist to identify any wetlands or T&E species; none were observed
- Geophysical data collection with EM61 along transects
- Total length of mapped transects was approximately 61 miles or 24 acres
- Identified follow up areas for placement of 28 grids approximately 50 feet x 100 feet in size

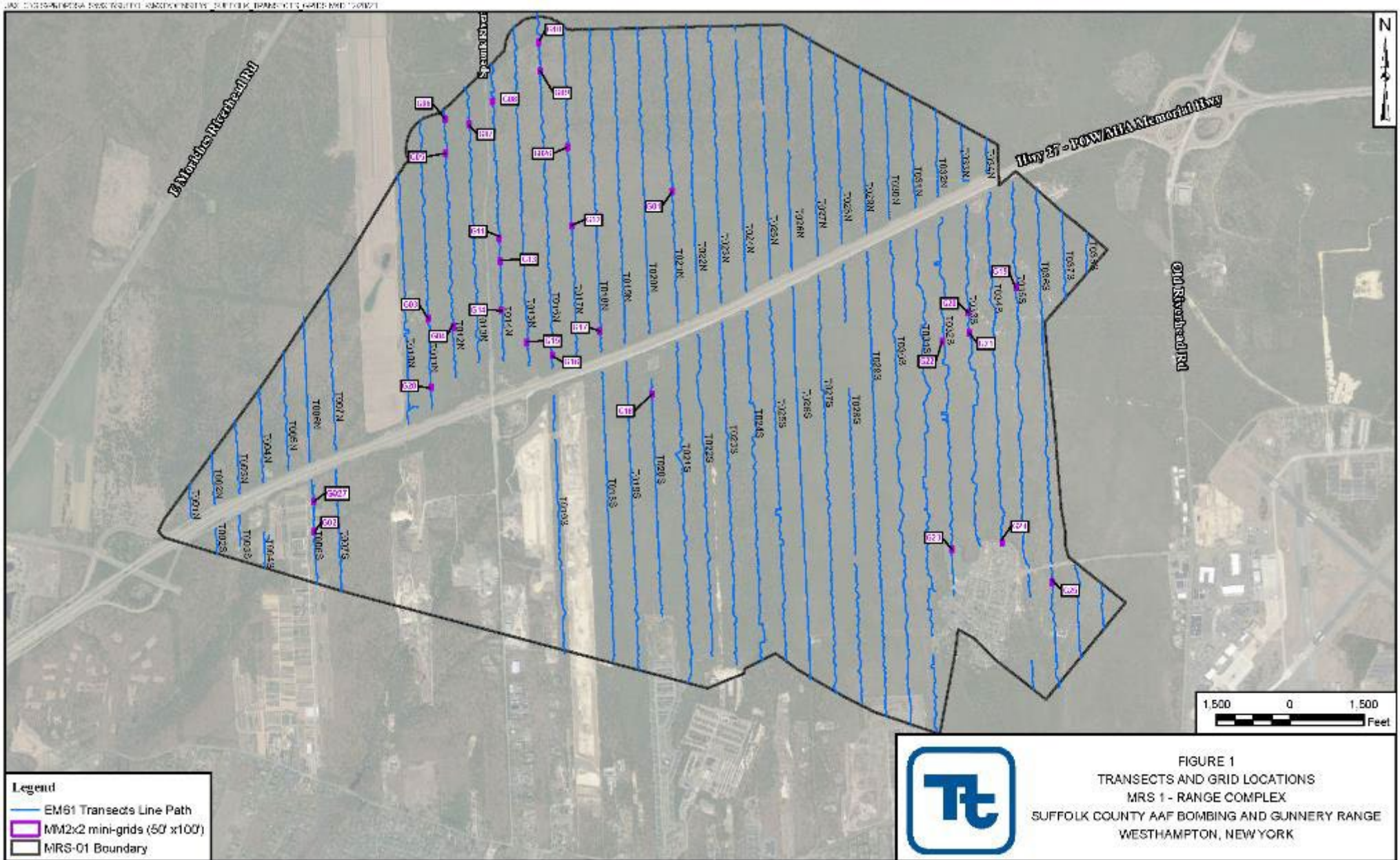


PHASE 1 IDENTIFIED HIGH-DENSITY AREAS





TRANSECT AND GRID LOCATIONS





FIELDWORK COMPLETED TO DATE



High Density/Low Density Area Characterization (Phase 2)

- Grids were marked and recorded by a licensed land surveyor.
- 24 grids in residential area
- 28 grids in non-residential area
- Removed all metals from the ground surface, whether DoD related or not, in each grid.
- Used MetalMapper 2x2 to collect data within each grid
- Determined dig list



No munitions and explosives of concern or munitions debris were found on the surface during field activities.



PHASE 3 FIELDWORK – INTRUSIVE INVESTIGATION



Intrusive Investigation

UXO technicians will dig the target locations with hand tools

- When excavating potential munitions, a safety zone of up to 638 feet will be established around the dig area and temporary displacement of residents will be needed.
- For any munition that is found, we will safely detonate it at the existing locations, OR if necessary and it's safe to move, we will detonate it elsewhere within the MRS project area.





WHAT DOES THIS MEAN FOR ME?

- Fieldwork
 - Contractors will be conducting the residential portion of digging operations starting April 8th for up to 2 weeks
 - Expect between 10-15 personnel for the digging operations, including support staff to coordinate safety zones
- The Dig team will only be working at properties where a right of entry was signed AND where geophysical surveys were completed.
- USACE is not seeking additional rights of entry at this time.
- However, in order to maintain the safety zone during digging operations occupants of nearby houses will be asked to leave their home from 8:30 am – 2:30 pm on certain days
- Additional work will be conducted before and after the safety zone is in effect during the hours of 8:00 am – 5:00 pm



WHAT DOES THIS MEAN FOR ME?

- Temporary road closures may be in effect but will be limited and marked appropriately.
- Letters to affected residents have been mailed and additional mailings will follow.
- Temporarily displaced residents will have access to the following:
 - Day-Use Hotel Conference Room and Private Rooms @ the Residence Inn Long Island East End, 2012 Old County Road, Riverhead, NY
 - Please try to provide USACE 24 hours notice if a private hotel room is needed (available from 7 am – 3 pm)
 - Continental breakfast and lunch will be served in the assigned Conference Room
 - Lunch food allowance based on General Services Administration (GSA) Rates
 - Gift card will be provided upon request



WHAT DOES THIS MEAN FOR ME?

- Transportation to Hotel & Back, if needed
 - Please provide 24 hours notice to USACE/Contractor team.
- Pet Kenneling/Day Care
 - Pets must be current on all vaccinations (for example, for dogs this includes rabies, kennel cough, parvo, distemper, and Bordetella), be spayed/neutered, and be 6 months of age or older.
- Plan to take anything needed during the day with you when you leave your house, including phone, wallet/purse, medications, etc.
- The field team will monitor all safety zones and stop work if non-essential personnel breach perimeter.

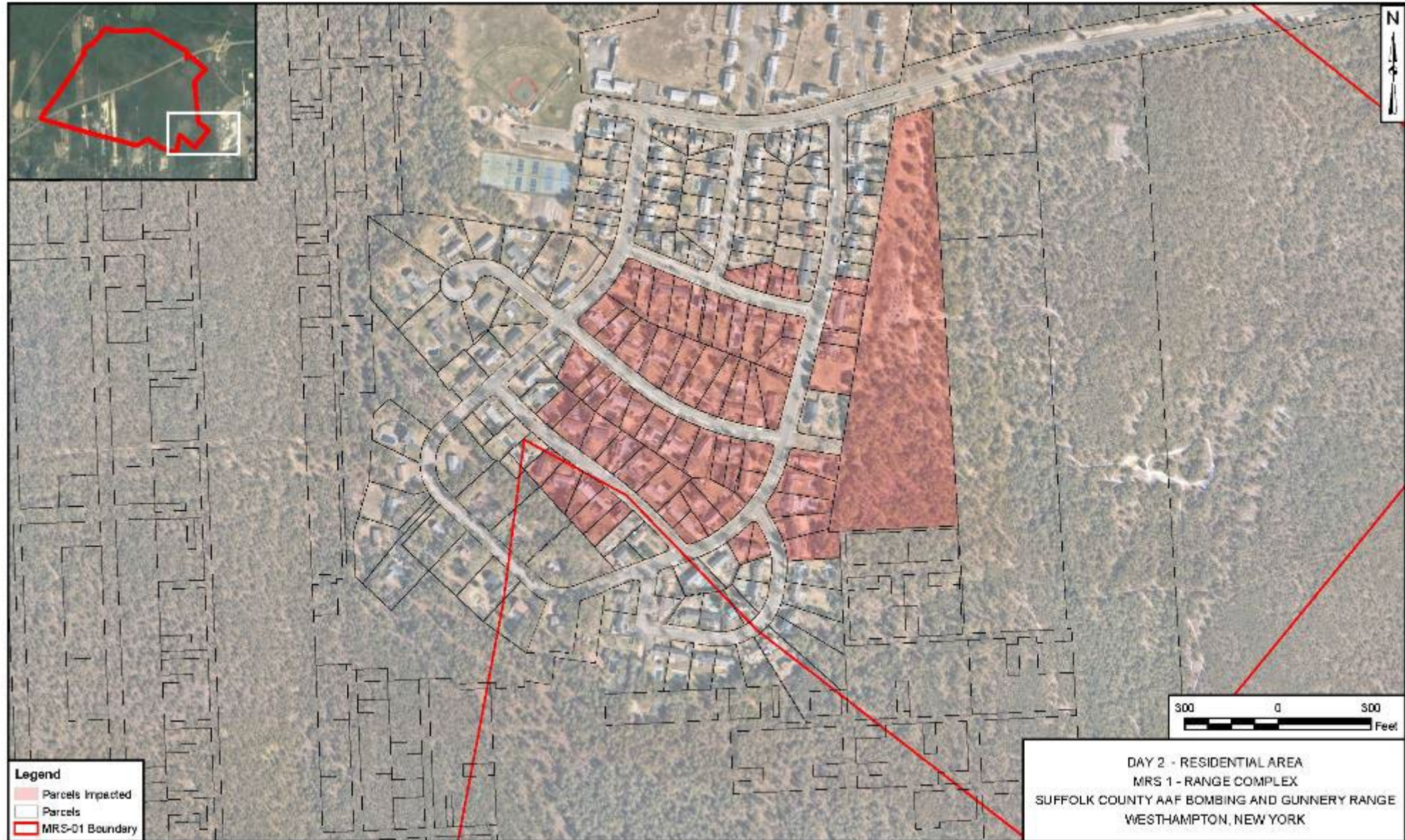


TEMPORARY DISPLACEMENTS - DAY 1



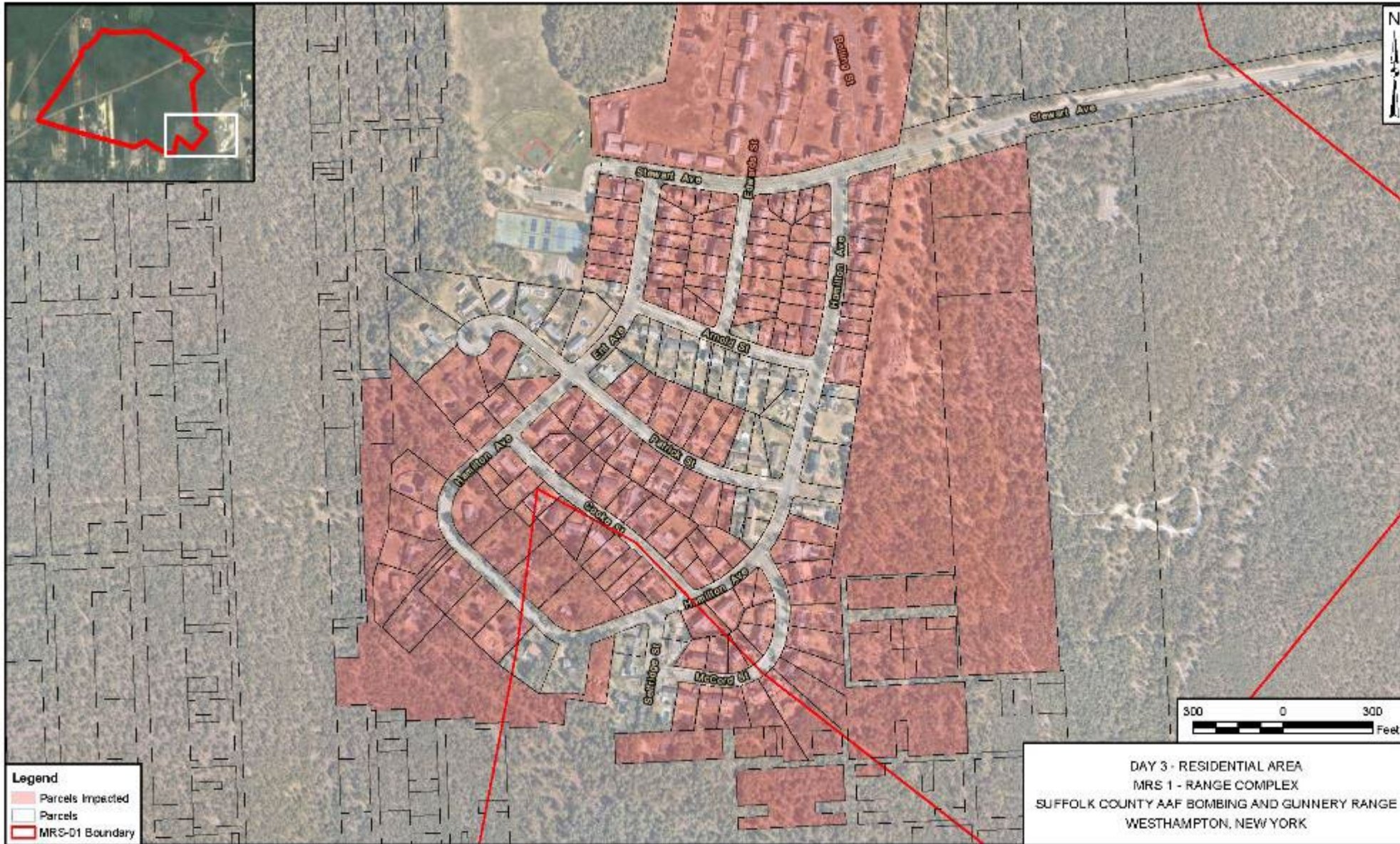


TEMPORARY DISPLACEMENTS – DAY 2



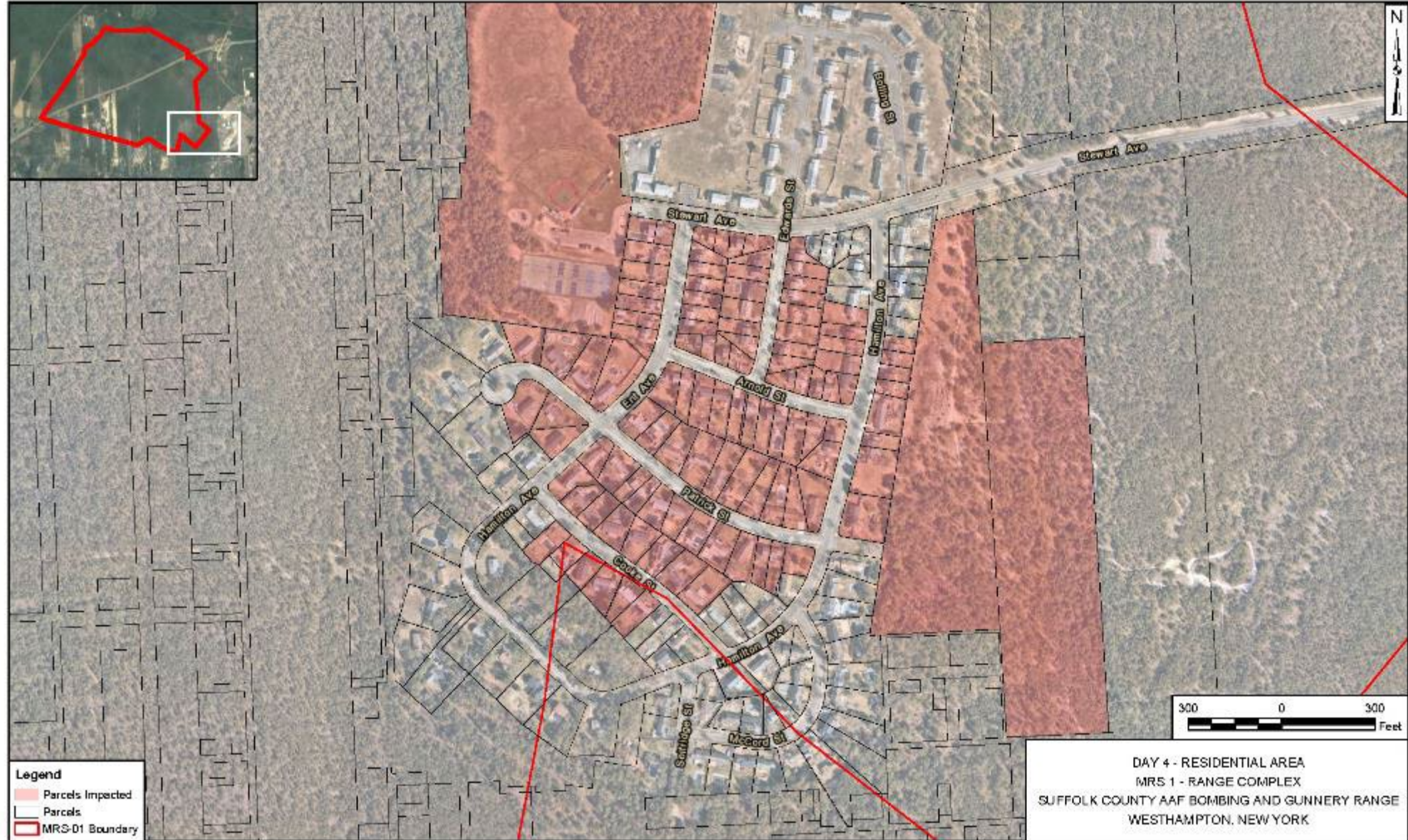


TEMPORARY DISPLACEMENTS – DAY 3





TEMPORARY DISPLACEMENTS – DAY 4





TEMPORARY DISPLACEMENTS – DAY 5





WHERE TO FIND INFORMATION ON THE PROJECT

- USACE website:
<https://www.nae.usace.army.mil/Missions/Projects-Topics/Suffolk-County-Army-Air-Field-Bombing-and-Gunnery-Range-FUDS/>
 - Fact Sheets
 - Project Documents
 - Contact Information
- Town of Southampton website: <http://www.southamptontownny.gov>
- Westhampton Free Library
 - Project documents will be available for public review, as they are finalized



ESTIMATED SCHEDULE: WHAT'S NEXT?

- **Fieldwork**

- Intrusive (digging) operations continue March-April 2024
- Soil Sampling Summer/Fall 2024; locations based on intrusive work

- **Reports**

- RI Report - Summer 2025
- Feasibility Study Report – Winter/Spring 2026
- Proposed Plan – Fall 2026 (includes public meeting)
- Final ROD - Summer/Fall 2027
- Remedial Action (if necessary) – starting in 2029



SAFETY REMINDER



FOLLOW THE 3Rs OF EXPLOSIVES SAFETY:

Recognize:

When you may have encountered a munition and that munitions are dangerous.

Retreat:

Do not approach, touch, move or disturb it, but carefully leave the area.

Report:

Call 911 and advise the police of what you saw and where you saw it.





QUESTIONS / OPEN DISCUSSION

USACE website:

<https://www.nae.usace.army.mil/Missions/Projects-Topics/Suffolk-County-Army-Air-Field-Bombing-and-Gunnery-Range-FUDS/>